



Lives International  
99 Pine Hill RD  
03063, Nashua, NH, USA  
www.lives-international.com

# Autoclave Sterilization

## According to EN285

Report number: 1234567

Report Date: 03.03.2016

### Equipment

Type	EN285 Autoclave - [N/A]
Brand	
Model	
Location	
Serial Number	
Internal Number	
Volume	N/A
Acceptance Criteria	EN285

### Delivered to

Lives International  
99 Pine Hill RD  
03063, Nashua, NH, USA  
www.lives-international.com

### CONCLUSION

**The current test Passed Successfully according to the acceptance criteria defined by the user**

This example allows the user to familiarize with the EN285 Acceptance Criteria.

<b>Validation Department Lives International</b>	
Name: John Smith	Date: 03.03.2016
Title: Validation Manager	Signature:
<b>QA Department Lives International</b>	
Name: Jane Smith	Date: 03.03.2016
Title: QA Manager	Signature:

Performed:  
03.03.2016 14:20:27

Created:

Reviewed:

# Table of Contents

Table of Contents .....	.2
Acceptance criteria conditions .....	.3
Summary results .....	.5
Chapters .....	.7
Biological Indicators .....	.8
Custom Tables .....	.9
Sensor Location 3D .....	.10
Images .....	.12
Trend .....	.13
Raw Data Report .....	.17
Verification report .....	.41
Calibration report .....	.42
External Documents Report .....	.45

# Acceptance criteria conditions

Acceptance criteria condition	Pass condition	Applies to	Start moment	Stop moment
<b>8.2.1.2.1</b>				
Equilibration time	<= 00:00:15	N/A	03.03.2016 11:53:00	03.03.2016 11:53:02
Start Condition:	Current Value of Channel #R1979 >= 121 for at least 3 scan(s)			
Stop Condition:	All Value of Assigned as Temperature >= 121 for at least 3 scan(s)			
Formula:	=maxDate(loggers) - minDate(loggers)			
Calculations have been performed for the following sensors:	#R756 (BM); #R1859 (TFL); #R1944 (TFR); #R1945 (TRL); #R1973 (TRR); #R1974 (BFL); #R1975 (BFR); #R1976 (BRL); #R1977 (BRR); #R1979 (Drain)			
<b>8.2.1.2.2</b>				
First 60 sec	<= 5.00 °C	N/A	03.03.2016 11:53:00	03.03.2016 11:54:00
Start Condition:	Current Value of Channel #R1979 >= 121 for at least 3 scan(s)			
Stop Condition:	After: 00:01:00			
Formula:	=max(max(value)-min(value)); Decimals: 2			
Calculations have been performed for the following sensors:	#R756 (BM); #R1859 (TFL); #R1944 (TFR); #R1945 (TRL); #R1973 (TRR); #R1974 (BFL); #R1975 (BFR); #R1976 (BRL); #R1977 (BRR); #R1979 (Drain)			
After 60 sec	<= 2.00 °C	N/A	03.03.2016 11:54:00	03.03.2016 12:13:36
Start Condition:	Current Value of Channel #R1979 >= 121 for at least 3 scan(s) Delay: 00:01:00			
Stop Condition:	Any Value of All Assigned as Temperature <= 121 for at least 1 scan(s) Stop before: 00:00:02			
Formula:	=max(max(value)-min(value)); Decimals: 2			
Calculations have been performed for the following sensors:	#R756 (BM); #R1859 (TFL); #R1944 (TFR); #R1945 (TRL); #R1973 (TRR); #R1974 (BFL); #R1975 (BFR); #R1976 (BRL); #R1977 (BRR); #R1979 (Drain)			
<b>8.2.1.2.3</b>				
Maximum temperature	<= 124.00 °C	N/A	03.03.2016 11:53:02	03.03.2016 12:13:36
Start Condition:	All Value of Assigned as Temperature >= 121 for at least 3 scan(s)			
Stop Condition:	Any Value of All Assigned as Temperature <= 121 for at least 1 scan(s) Stop before: 00:00:02			
Formula:	=max(logger); max(SST); Decimals: 2			
Calculations have been performed for the following sensors:	#R756 (BM); #R1859 (TFL); #R1944 (TFR); #R1945 (TRL); #R1973 (TRR); #R1974 (BFL); #R1975 (BFR); #R1976 (BRL); #R1977 (BRR); #R1979 (Drain)			
Minimum temperature	>= 121.00 °C	N/A	03.03.2016 11:53:02	03.03.2016 12:13:36
Start Condition:	All Value of Assigned as Temperature >= 121 for at least 3 scan(s)			
Stop Condition:	Any Value of All Assigned as Temperature <= 121 for at least 1 scan(s) Stop before: 00:00:02			
Formula:	=min(logger); min(SST); Decimals: 2			
Calculations have been performed for the following sensors:	#R756 (BM); #R1859 (TFL); #R1944 (TFR); #R1945 (TRL); #R1973 (TRR); #R1974 (BFL); #R1975 (BFR); #R1976 (BRL); #R1977 (BRR); #R1979 (Drain)			
Max temp difference - all scans during hold time	<= 2.00 °C	N/A	03.03.2016 11:53:02	03.03.2016 12:13:36
Start Condition:	All Value of Assigned as Temperature >= 121 for at least 3 scan(s)			
Stop Condition:	Any Value of All Assigned as Temperature <= 121 for at least 1 scan(s) Stop before: 00:00:02			
Formula:	=max(max(value,SST)-min(value,SST)); Decimals: 2			
Calculations have been performed for the following sensors:	#R756 (BM); #R1859 (TFL); #R1944 (TFR); #R1945 (TRL); #R1973 (TRR); #R1974 (BFL); #R1975 (BFR); #R1976 (BRL); #R1977 (BRR); #R1979 (Drain)			
<b>8.2.1.2.4</b>				

Performed:  
03.03.2016 14:20:27

Created:

Reviewed:

# Acceptance criteria conditions

Acceptance criteria condition	Pass condition	Applies to	Start moment	Stop moment
Holding time  Start Condition: Stop Condition:  Formula:  Calculations have been performed for the following sensors:	>= 00:15:00  All Value of Assigned as Temperature >= 121 for at least 3 scan(s) Any Value of All Assigned as Temperature <= 121 for at least 1 scan(s) Stop before: 00:00:02  =maxDate(loggers) - minDate(loggers)	N/A	03.03.2016 11:53:02	03.03.2016 12:13:36
	#R756 (BM); #R1859 (TFL); #R1944 (TFR); #R1945 (TRL); #R1973 (TRR); #R1974 (BFL); #R1975 (BFR); #R1976 (BRL); #R1977 (BRR); #R1979 (Drain)			

Performed:  
 03.03.2016 14:20:27

Created:

Reviewed:

# Summary results

Acceptance criteria condition	Result	Pass condition	Status	Comment
<b>8.2.1.2.1</b>				
Equilibration time	00:00:02	<= 00:00:15	Pass	
<b>8.2.1.2.2</b>				
First 60 sec	0.20 °C	<= 5.00 °C	Pass	03.03.2016 11:53:02
After 60 sec	0.31 °C	<= 2.00 °C	Pass	03.03.2016 12:13:36
<b>8.2.1.2.3</b>				
Maximum temperature	123.46 °C	<= 124.00 °C	Pass	#R756 (BM) 03.03.2016 12:04:44
Maximum temperature	123.84 °C	<= 124.00 °C	Pass	SR756 (BM)P 03.03.2016 12:05:38
Maximum temperature	123.33 °C	<= 124.00 °C	Pass	#R1859 (TFL) 03.03.2016 12:00:20
Maximum temperature	123.32 °C	<= 124.00 °C	Pass	#R1944 (TFR) 03.03.2016 12:05:40
Maximum temperature	123.34 °C	<= 124.00 °C	Pass	#R1945 (TRL) 03.03.2016 12:04:44
Maximum temperature	123.39 °C	<= 124.00 °C	Pass	#R1973 (TRR) 03.03.2016 12:04:58
Maximum temperature	123.41 °C	<= 124.00 °C	Pass	#R1974 (BFL) 03.03.2016 12:00:30
Maximum temperature	123.35 °C	<= 124.00 °C	Pass	#R1975 (BFR) 03.03.2016 12:05:36
Maximum temperature	123.40 °C	<= 124.00 °C	Pass	#R1976 (BRL) 03.03.2016 12:00:32
Maximum temperature	123.33 °C	<= 124.00 °C	Pass	#R1977 (BRR) 03.03.2016 12:00:24
Maximum temperature	123.41 °C	<= 124.00 °C	Pass	#R1979 (Drain) 03.03.2016 12:00:24
Minimum temperature	121.12 °C	>= 121.00 °C	Pass	#R756 (BM) 03.03.2016 11:53:02
Minimum temperature	121.06 °C	>= 121.00 °C	Pass	SR756 (BM)P 03.03.2016 11:53:02
Minimum temperature	121.15 °C	>= 121.00 °C	Pass	#R1859 (TFL) 03.03.2016 11:53:02
Minimum temperature	121.02 °C	>= 121.00 °C	Pass	#R1944 (TFR) 03.03.2016 11:53:02
Minimum temperature	121.22 °C	>= 121.00 °C	Pass	#R1945 (TRL) 03.03.2016 11:53:02
Minimum temperature	121.17 °C	>= 121.00 °C	Pass	#R1973 (TRR) 03.03.2016 11:53:02
Minimum temperature	121.19 °C	>= 121.00 °C	Pass	#R1974 (BFL) 03.03.2016 11:53:02
Minimum temperature	121.16 °C	>= 121.00 °C	Pass	#R1975 (BFR) 03.03.2016 11:53:02
Minimum temperature	121.19 °C	>= 121.00 °C	Pass	#R1976 (BRL) 03.03.2016 11:53:02

Performed:  
03.03.2016 14:20:27

Created:

Reviewed:

## Summary results

Acceptance criteria condition	Result	Pass condition	Status	Comment
Minimum temperature	121.14 °C	>= 121.00 °C	Pass	#R1977 (BRR) 03.03.2016 11:53:02
Minimum temperature	121.22 °C	>= 121.00 °C	Pass	#R1979 (Drain) 03.03.2016 11:53:02
Max temp difference - all scans during hold time	0.55 °C	<= 2.00 °C	Pass	03.03.2016 12:09:16
<b>8.2.1.2.4</b>				
Holding time	00:20:34	>= 00:15:00	Pass	

**TEST PASSED – All acceptance criteria conditions defined by the user have been fulfilled.**

**Standards Chapter DEMO DATA**

## EN285 Excerpt

## 8.2.1.2 Small load, thermometric

8.2.1.2.1 The equilibration time shall not exceed 15 s for sterilizer chambers up to 800 l usable space and 30 s for larger sterilizer chambers.

8.2.1.2.2 During the plateau period the temperature measured above the test pack (see 16.1) shall not exceed the temperature measured at the reference measurement point of the sterilizer chamber by more than 5 °C for the first 60 s and 2 °C for the remaining period (see also Figure D.1).

8.2.1.2.3 Throughout the holding time the temperature measured at the reference measurement point of the sterilizer chamber, any temperature measured within the test pack and the saturated steam temperature calculated from the measured chamber pressure shall:

be within the sterilization temperature band;

not differ from another by more than 2 °C.

The saturated steam temperature shall be calculated from the following equation:

$$T = A + B (\ln P + C) - 1.2 \quad (1)$$

where

T is the saturated steam temperature in Kelvin;

P is the measured pressure in megapascals, time averaged to result in a time constant between 1 s and

2,5 s;

A is 42,677 6 K;

B is -3 892,70 K;

C is -9,486 54.

8.2.1.2.4 The holding time shall be not less than 15 min, 10 min and 3 min for sterilization temperatures of 121 °C, 126 °C and 134 °C respectively.

## Formula used for Max Difference

$$\text{minval} = \min(\{R756\}; \{R1979\}; \{SR756P\})$$

$$\text{maxval} = \max(\{R756\}; \{R1979\}; \{SR756P\})$$

$$\text{deltaval} = \max(\{R756\}; \{R1979\}; \{SR756P\}) - \min(\{R756\}; \{R1979\}; \{SR756P\})$$

# Biological Indicators

Label	Type	Position	Negative	Positive
BI 1	Geobacillus Stearothermophilus	#R1859 (TFL)	Negative	
BI 2	Geobacillus Stearothermophilus	#R1944 (TFR)	Negative	
BI 3	Geobacillus Stearothermophilus	#R1945 (TRL)	Negative	
BI 4	Geobacillus Stearothermophilus	#R1973 (TRR)	Negative	
BI 5	Geobacillus Stearothermophilus	#R1974 (BFL)	Negative	
BI 6	Geobacillus Stearothermophilus	#R1975 (BFR)	Negative	
BI 7	Geobacillus Stearothermophilus	#R1976 (BRL)	Negative	
BI 8	Geobacillus Stearothermophilus	#R1977 (BRR)	Negative	
BI 9	Geobacillus Stearothermophilus	#R1979 (Drain)	Negative	
Witness				Positive

Performed:  
03.03.2016 14:20:27

Created:

Reviewed:



# Custom Tables

## Recorded and measured values

Time	Logger Temperature	Autoclave Temperature	Comment
11:53:02	121.12	121.3	Start Exposure
12:13:36	121.55	121.3	Stop Exposure
START			
MIDDLE			
END			
CUSTOM		BY USER	

Performed:  
03.03.2016 14:20:27

Created:

Reviewed:

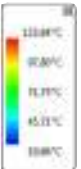
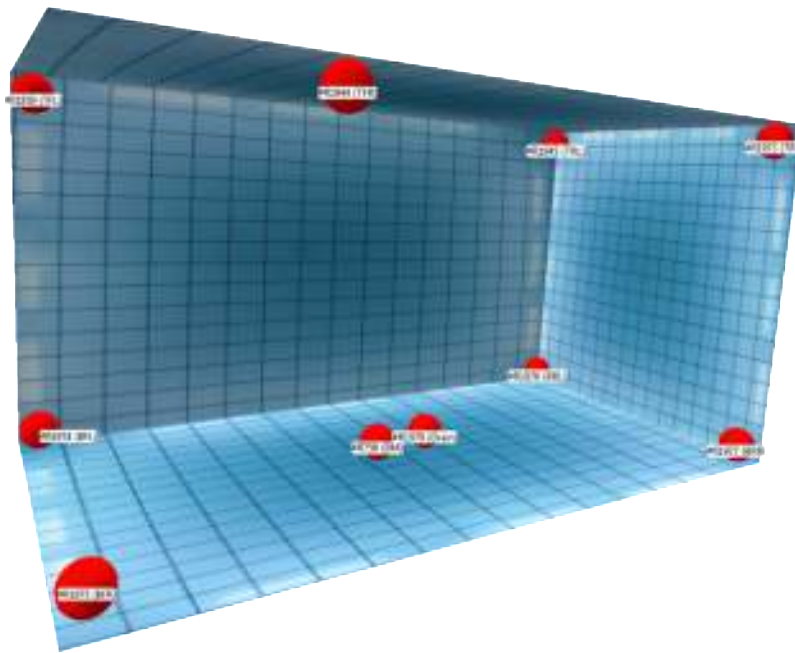
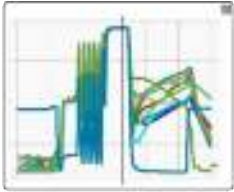
Autoclave Sterilization - No. 1234567

## EN285 - Autoclave Validation

Report Name: Autoclave Sterilization  
XpertLog 3.6.6 - Licensed to: ITL  
Imported to Autoclave\_ITLDEMO\_ on .\LIVES (19.09.2016 14:44:21)

Virtual Channels:  
minval=min({#R756};{#R1979};{SR756P})  
maxval=max({#R756};{#R1979};{SR756P})  
deltaval=max({#R756};{#R1979};{SR756P})-min({#R756};{#R1979};{SR756P})  
Equip. Info: EN285 Autoclave; Serial Number: ; Location:

Comment: Perspective View

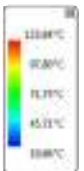
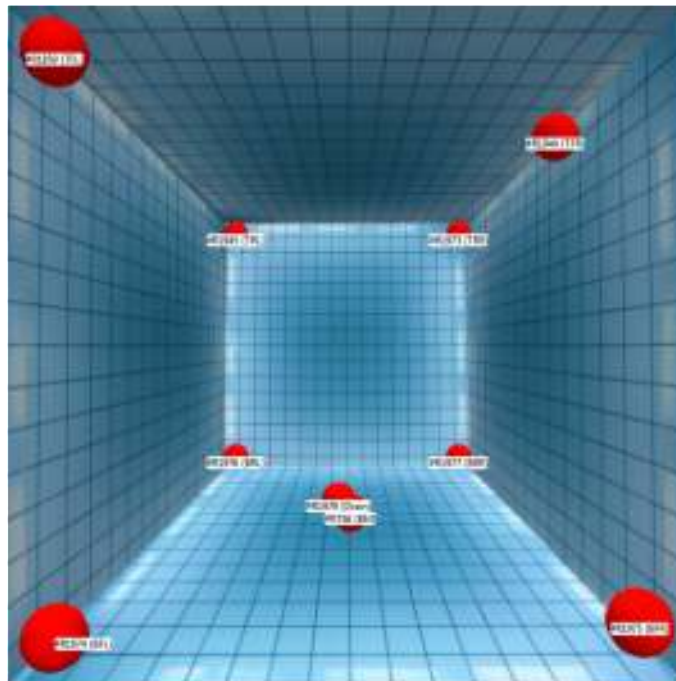
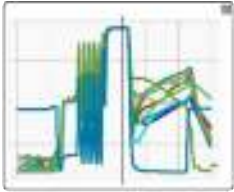


## EN285 - Autoclave Validation

Report Name: Autoclave Sterilization  
XpertLog 3.6.6 - Licensed to: ITL  
Imported to Autoclave\_ITLDEMO\_ on .\LIVES (19.09.2016 14:44:21)

Virtual Channels:  
 $\text{minval}=\text{min}(\{\#R756\};\{\#R1979\};\{\text{SR756P}\})$   
 $\text{maxval}=\text{max}(\{\#R756\};\{\#R1979\};\{\text{SR756P}\})$   
 $\text{deltaval}=\text{max}(\{\#R756\};\{\#R1979\};\{\text{SR756P}\})-\text{min}(\{\#R756\};\{\#R1979\};\{\text{SR756P}\})$   
Equip. Info: EN285 Autoclave; Serial Number: ; Location:

Comment: Front View

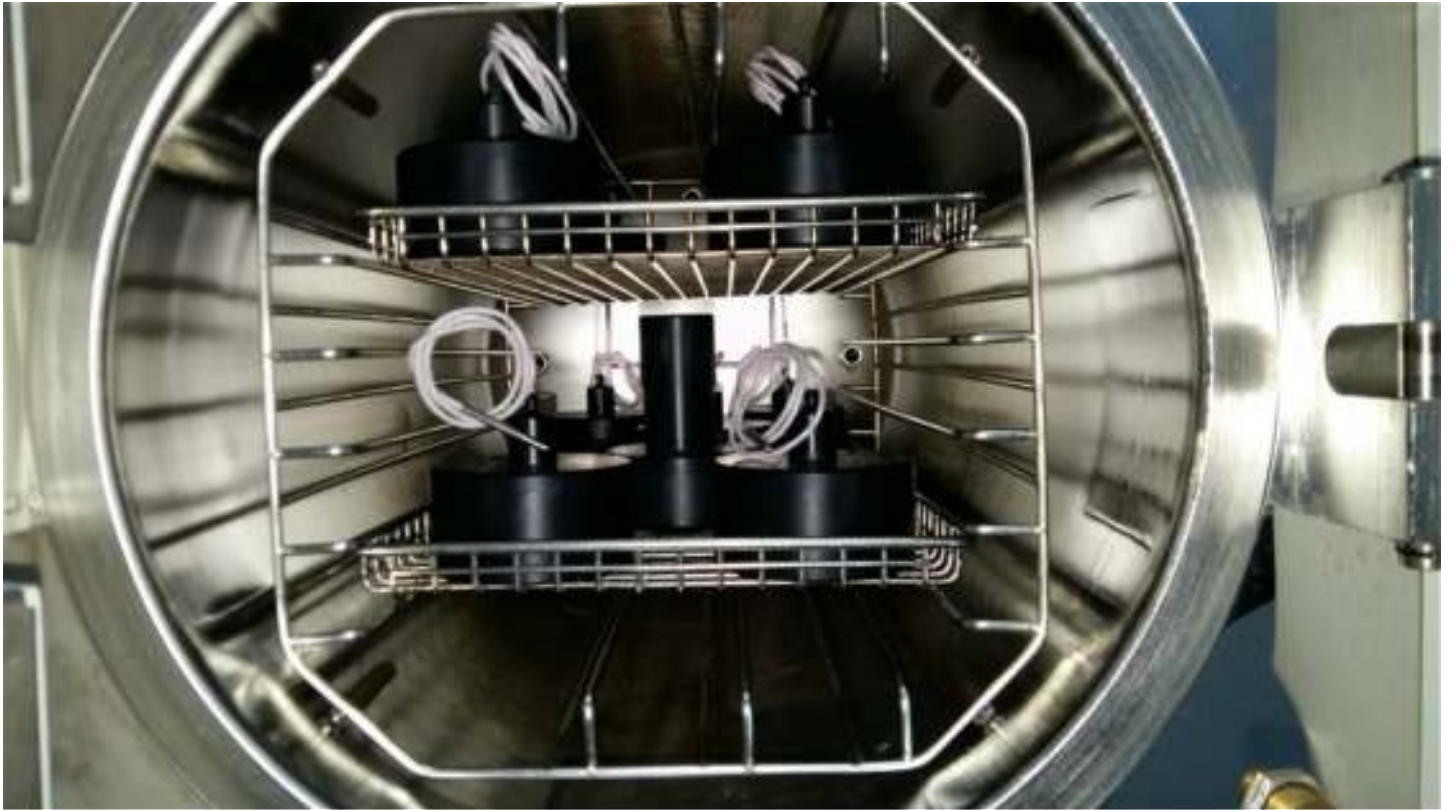


EN285 - Autoclave Validation

Report Name: Autoclave Sterilization  
XpertLog 3.6.6 - Licensed to: ITL  
Imported to Autoclave\_ITLDEMO\_ on .LIVES (19.09.2016 14:44:21)

Virtual Channels:  
minval=min({#R756};{#R1979};{SR756P})  
maxval=max({#R756};{#R1979};{SR756P})  
deltaval=max({#R756};{#R1979};{SR756P})-min({#R756};{#R1979};{SR756P})  
Equip. Info: EN285 Autoclave; Serial Number: ; Location:

Comment: Real Picture



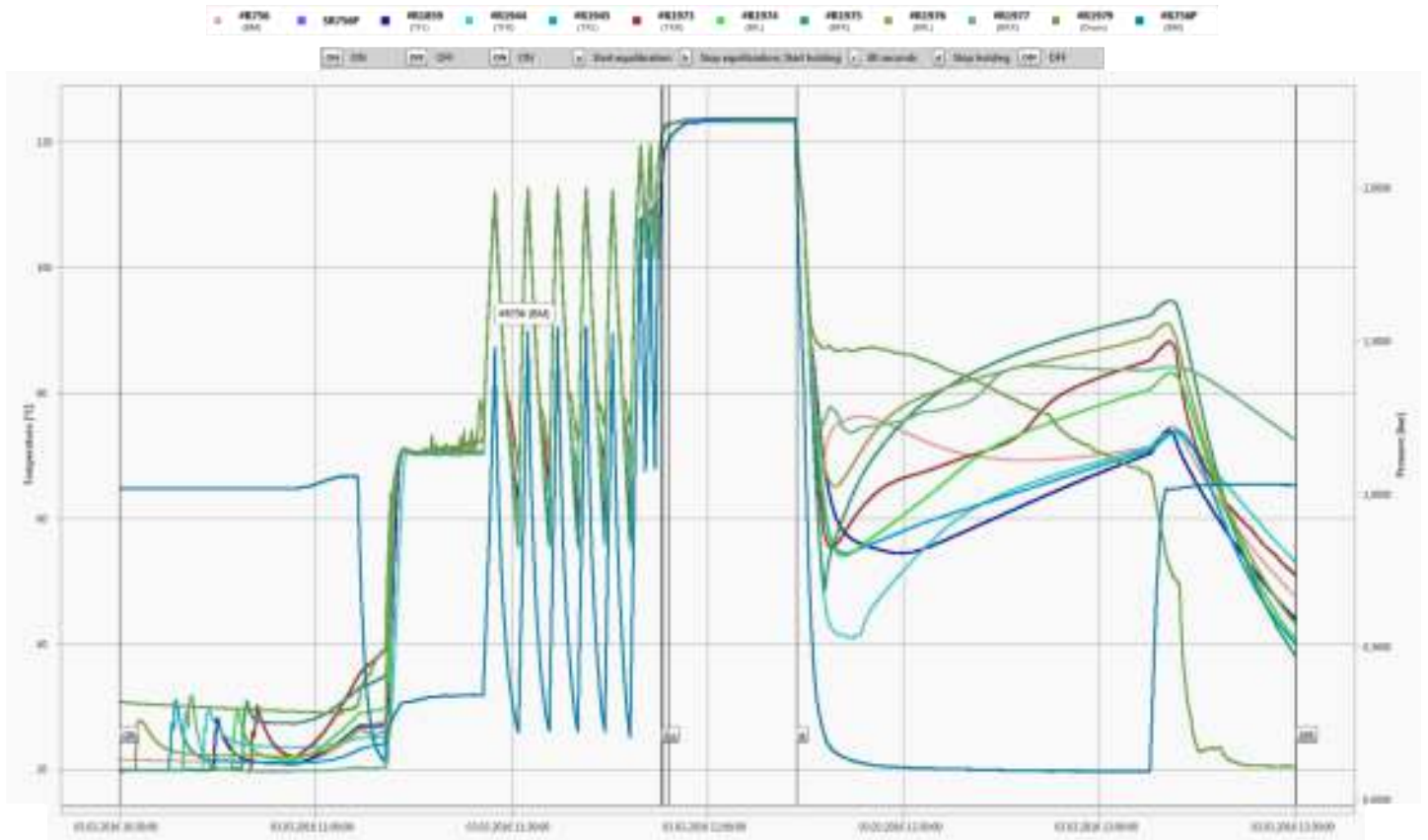
EN285 - Autoclave Validation

Report Name: Autoclave Sterilization  
XpertLog 3.6.6 - Licensed to: ITL  
Imported to Autoclave\_ITLDEMO\_ on .\LIVES (19.09.2016 14:44:21)

- a - [03.03.2016 11:53:00]- Start equilibration
- b - [03.03.2016 11:53:02]- Stop equilibration; Start holding
- c - [03.03.2016 11:54:00]- 60 seconds
- 1 - [03.03.2016 12:09:16]- Max Difference
- d - [03.03.2016 12:13:36]- Stop holding

Virtual Channels:  
minval=min({#R756};{#R1979};{SR756P})  
maxval=max({#R756};{#R1979};{SR756P})  
deltaval=max({#R756};{#R1979};{SR756P})-min({#R756};{#R1979};{SR756P})  
Equip. Info: EN285 Autoclave; Serial Number: ; Location:

Comment: All Values



EN285 - Autoclave Validation

Report Name: Autoclave Sterilization  
XpertLog 3.6.6 - Licensed to: ITL  
Imported to Autoclave\_ITLDEMO\_ on .\LIVES (19.09.2016 14:44:21)

- a - [03.03.2016 11:53:00]- Start equilibration
- b - [03.03.2016 11:53:02]- Stop equilibration; Start holding
- c - [03.03.2016 11:54:00]- 60 seconds
- 1 - [03.03.2016 12:09:16]- Max Difference
- d - [03.03.2016 12:13:36]- Stop holding

Virtual Channels:  
minval=min({#R756};{#R1979};{SR756P})  
maxval=max({#R756};{#R1979};{SR756P})  
deltaval=max({#R756};{#R1979};{SR756P})-min({#R756};{#R1979};{SR756P})  
Equip. Info: EN285 Autoclave; Serial Number: ; Location:

Comment: Holding



EN285 - Autoclave Validation

Report Name: Autoclave Sterilization  
XpertLog 3.6.6 - Licensed to: ITL  
Imported to Autoclave\_ITLDEMO\_on .\LIVES (19.09.2016 14:44:21)

- a - [03.03.2016 11:53:00]- Start equilibration
- b - [03.03.2016 11:53:02]- Stop equilibration; Start holding
- c - [03.03.2016 11:54:00]- 60 seconds
- 1 - [03.03.2016 12:09:16]- Max Difference
- d - [03.03.2016 12:13:36]- Stop holding

Virtual Channels:  
minval=min({#R756};{#R1979};{SR756P})  
maxval=max({#R756};{#R1979};{SR756P})  
deltaval=max({#R756};{#R1979};{SR756P})-min({#R756};{#R1979};{SR756P})  
Equip. Info: EN285 Autoclave; Serial Number: ; Location:

Comment: Sterilisation Zoom



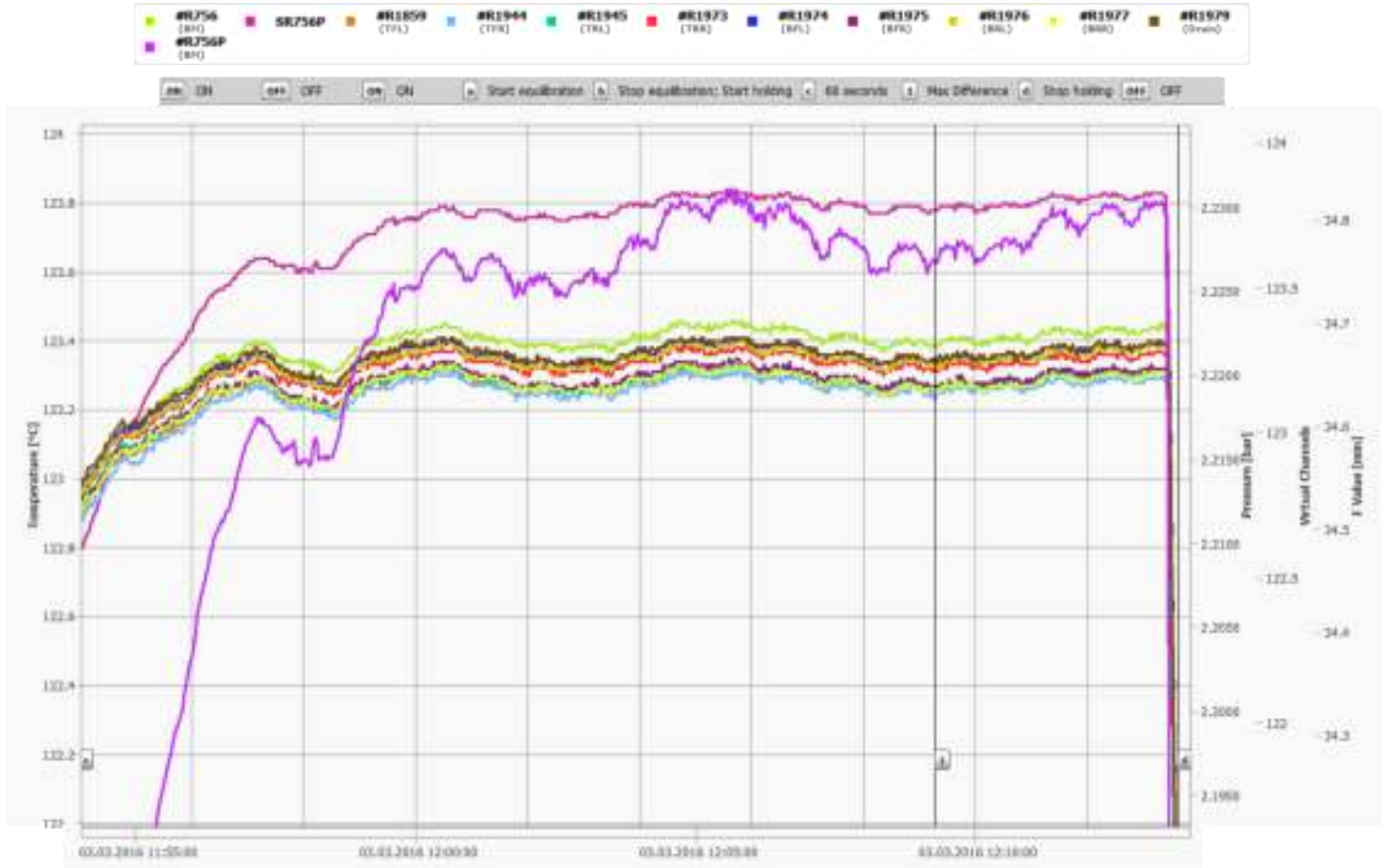
EN285 - Autoclave Validation

Report Name: Autoclave Sterilization  
XpertLog 3.6.6 - Licensed to: ITL  
Imported to Autoclave\_ITLDEMO\_on .\LIVES (19.09.2016 14:44:21)

- a - [03.03.2016 11:53:00]- Start equilibration
- b - [03.03.2016 11:53:02]- Stop equilibration; Start holding
- c - [03.03.2016 11:54:00]- 60 seconds
- 1 - [03.03.2016 12:09:16]- Max Difference
- d - [03.03.2016 12:13:36]- Stop holding

Virtual Channels:  
minval=min({#R756};{#R1979};{SR756P})  
maxval=max({#R756};{#R1979};{SR756P})  
deltaval=max({#R756};{#R1979};{SR756P})-min({#R756};{#R1979};{SR756P})  
Equip. Info: EN285 Autoclave; Serial Number: ; Location:

Comment: Zoom A





# Raw Data Report

## EN285 - Autoclave Validation

XpertLog 3.6.6 - Licensed to: ITL  
 Imported to Autoclave\_ITLDEMO\_on .\LIVES (19.09.2016 14:44:21)

- a - [03.03.2016 11:53:00]- Start equilibration
- b - [03.03.2016 11:53:02]- Stop equilibration; Start holding
- c - [03.03.2016 11:54:00]- 60 seconds
- 1 - [03.03.2016 12:09:16]- Max Difference
- d - [03.03.2016 12:13:36]- Stop holding

Virtual Channels:  
 minval=min({#R756};{#R1979};{SR756P})  
 maxval=max({#R756};{#R1979};{SR756P})  
 deltaval=max({#R756};{#R1979};{SR756P})-min({#R756};{#R1979};{SR756P})  
 Equip. Info: EN285 Autoclave; Serial Number: ; Location:

Date & Time	Action	#R756	SR756P	#R1859	#R1944	#R1945	#R1973	#R1974	#R1975	#R1976	#R1977	#R1979	#R756P	deltaval	maxval	minval
Label																
Assign.		BM		TFL	TFR	TRL	TRR	BFL	BFR	BRL	BRR	Drain	BM			
B-Val		+0.00000	-	-0.06052	-0.02684	+0.00741	-0.00298	+0.00936	-0.03534	-0.00189	-0.00398	-0.01739	-	-	-	-
M-Val		+1.00000	-	+0.99998	+0.99983	+0.99950	+0.99969	+0.99973	+0.99980	+0.99970	+0.99979	+0.99994	-	-	-	-
Used Calib.:		Factory	-	#1	#1	#1	#1	#1	#1	#1	#1	#1	Factory	-	-	-
#1: EN285 Calibration				Pass	Pass	Pass	Pass	Pass	Pass	Pass	Pass	Pass	Pass			
Post Test Verif.:		-		#1	#1	#1	#1	#1	#1	#1	#1	#1				
#1: EN285 Verification				Pass	Pass	Pass	Pass	Pass	Pass	Pass	Pass	Pass				
Set As		Value	Calc.	Value	Value	Value	Value	Value	Value	Value	Value	Value	Value	Calc.	Calc.	Calc.
(dd.MM.yyyy HH:mm:ss)	Func.	T (deg C)	T (deg C)	T (deg C)	T (deg C)	T (deg C)	T (deg C)	T (deg C)	T (deg C)	T (deg C)	T (deg C)	T (deg C)	P (bar abs)			
03.03.2016 10:30:00	ON	21.65		19.98	19.93	19.92	19.91	19.86	19.92	19.80	19.84	30.78	1.0203			
03.03.2016 10:40:00		21.38		20.06	20.06	24.87	20.01	19.95	20.00	22.58	27.86	30.14	1.0201			
03.03.2016 10:50:00		21.25		21.43	23.91	21.27	19.77	23.90	29.15	22.23	19.82	29.59	1.0202			
03.03.2016 11:00:00		21.89		22.16	23.65	21.24	24.52	22.91	28.21	22.68	19.83	29.14	1.0337			
03.03.2016 11:10:00		27.62		27.01	25.17	24.02	38.51	29.62	34.57	25.92	20.36	38.46	0.1417			
03.03.2016 11:20:00		70.54		70.65	70.73	70.32	70.77	70.64	70.75	70.60	70.48	71.83	0.3415			
03.03.2016 11:26:50														0.64	100.88	100.24
03.03.2016 11:30:00		68.93		70.70	68.15	67.81	75.55	68.22	67.92	69.61	68.94	71.77	0.3359			
03.03.2016 11:36:36														1.83	101.82	99.99
03.03.2016 11:40:00		66.94		68.27	57.91	60.94	60.95	67.75	58.33	66.73	65.56	73.12	0.2426			
03.03.2016 11:45:02														1.88	102.53	100.65
03.03.2016 11:50:00		114.11	112.41	114.07	114.50	113.88	114.27	114.31	114.15	114.24	114.21	114.06	1.5471			
03.03.2016 11:51:58		101.90	103.21	101.52	101.93	101.52	101.63	101.60	101.68	101.58	101.53	101.55	1.1310	1.69	103.21	101.52
03.03.2016 11:52:00		102.31	104.68	102.00	102.00	102.26	101.97	101.86	102.09	101.91	101.86	101.94	1.1907	2.82	104.68	101.86
03.03.2016 11:52:02		103.35	105.92	103.13	102.87	103.48	103.02	102.94	103.16	103.01	102.96	103.02	1.2426	3.05	105.92	102.87
03.03.2016 11:52:04		104.55	107.00	104.38	104.02	104.78	104.25	104.23	104.39	104.28	104.25	104.29	1.2893	2.98	107.00	104.02
03.03.2016 11:52:06		105.75	108.02	105.63	105.20	106.01	105.49	105.49	105.60	105.55	105.50	105.55	1.3349	2.82	108.02	105.20
03.03.2016 11:52:08		106.89	108.98	106.81	106.33	107.14	106.67	106.67	106.77	106.71	106.68	106.72	1.3792	2.65	108.98	106.33
03.03.2016 11:52:10		107.96	109.90	107.91	107.44	108.22	107.77	107.77	107.87	107.82	107.78	107.83	1.4226	2.46	109.90	107.44

Performed:  
 03.03.2016 14:20:27

Created:

Reviewed:

# Raw Data Report

## EN285 - Autoclave Validation

XpertLog 3.6.6 - Licensed to: ITL  
 Imported to Autoclave\_ITLDEMO\_on .\LIVES (19.09.2016 14:44:21)

### Virtual Channels:

minval=min({#R756};{#R1979};{SR756P})  
 maxval=max({#R756};{#R1979};{SR756P})  
 deltaval=max({#R756};{#R1979};{SR756P})-min({#R756};{#R1979};{SR756P})  
 Equip. Info: EN285 Autoclave; Serial Number: ; Location:

a - [03.03.2016 11:53:00]- Start equilibration  
 b - [03.03.2016 11:53:02]- Stop equilibration; Start holding  
 c - [03.03.2016 11:54:00]- 60 seconds  
 1 - [03.03.2016 12:09:16]- Max Difference  
 d - [03.03.2016 12:13:36]- Stop holding

Date & Time	Action	#R756	SR756P	#R1859	#R1944	#R1945	#R1973	#R1974	#R1975	#R1976	#R1977	#R1979	#R756P	deltaval	maxval	minval
03.03.2016 11:52:12		108.99	110.79	108.93	108.46	109.25	108.82	108.82	108.91	108.87	108.83	108.88	1.4657	2.33	110.79	108.46
03.03.2016 11:52:14		109.96	111.67	109.93	109.46	110.22	109.81	109.82	109.91	109.86	109.83	109.87	1.5093	2.21	111.67	109.46
03.03.2016 11:52:16		110.89	112.52	110.88	110.43	111.18	110.78	110.78	110.86	110.83	110.78	110.84	1.5527	2.09	112.52	110.43
03.03.2016 11:52:18		111.81	113.36	111.81	111.36	112.10	111.71	111.71	111.79	111.76	111.71	111.77	1.5961	2.00	113.36	111.36
03.03.2016 11:52:20		112.71	114.17	112.72	112.27	113.00	112.63	112.63	112.70	112.67	112.62	112.68	1.6393	1.90	114.17	112.27
03.03.2016 11:52:22		113.58	114.92	113.60	113.16	113.86	113.51	113.50	113.58	113.54	113.50	113.57	1.6802	1.76	114.92	113.16
03.03.2016 11:52:24		114.40	115.63	114.43	114.00	114.69	114.35	114.36	114.42	114.41	114.36	114.40	1.7191	1.63	115.63	114.00
03.03.2016 11:52:26		115.18	116.26	115.22	114.81	115.46	115.15	115.15	115.20	115.19	115.15	115.19	1.7546	1.45	116.26	114.81
03.03.2016 11:52:28		115.89	116.83	115.93	115.56	116.15	115.87	115.88	115.92	115.92	115.87	115.92	1.7871	1.27	116.83	115.56
03.03.2016 11:52:30		116.53	117.30	116.58	116.22	116.78	116.53	116.54	116.58	116.57	116.53	116.59	1.8148	1.08	117.30	116.22
03.03.2016 11:52:32		117.09	117.68	117.14	116.83	117.32	117.11	117.12	117.13	117.13	117.10	117.17	1.8367	0.85	117.68	116.83
03.03.2016 11:52:34		117.56	118.00	117.61	117.33	117.76	117.60	117.60	117.60	117.62	117.57	117.63	1.8561	0.67	118.00	117.33
03.03.2016 11:52:36		117.95	118.28	118.00	117.75	118.13	117.99	118.00	118.00	118.02	117.97	118.04	1.8729	0.53	118.28	117.75
03.03.2016 11:52:38		118.29	118.56	118.34	118.11	118.46	118.33	118.34	118.34	118.36	118.31	118.38	1.8894	0.45	118.56	118.11
03.03.2016 11:52:40		118.60	118.82	118.64	118.45	118.75	118.65	118.67	118.65	118.67	118.63	118.69	1.9053	0.37	118.82	118.45
03.03.2016 11:52:42		118.89	119.07	118.93	118.75	119.04	118.94	118.95	118.94	118.96	118.92	118.99	1.9205	0.32	119.07	118.75
03.03.2016 11:52:44		119.17	119.31	119.20	119.04	119.31	119.21	119.22	119.22	119.22	119.18	119.26	1.9352	0.27	119.31	119.04
03.03.2016 11:52:46		119.41	119.55	119.46	119.30	119.56	119.48	119.49	119.48	119.49	119.45	119.52	1.9500	0.26	119.56	119.30
03.03.2016 11:52:48		119.67	119.77	119.71	119.56	119.81	119.72	119.74	119.73	119.74	119.70	119.76	1.9639	0.25	119.81	119.56
03.03.2016 11:52:50		119.91	119.99	119.95	119.80	120.04	119.97	119.98	119.95	119.98	119.93	120.00	1.9776	0.24	120.04	119.80
03.03.2016 11:52:52		120.14	120.20	120.18	120.04	120.28	120.20	120.21	120.19	120.21	120.17	120.24	1.9905	0.24	120.28	120.04
03.03.2016 11:52:54		120.36	120.40	120.40	120.26	120.50	120.42	120.43	120.41	120.44	120.39	120.47	2.0030	0.24	120.50	120.26
03.03.2016 11:52:56		120.57	120.58	120.61	120.48	120.69	120.64	120.64	120.62	120.64	120.60	120.67	2.0147	0.21	120.69	120.48
03.03.2016 11:52:58		120.77	120.75	120.80	120.68	120.87	120.83	120.83	120.82	120.84	120.78	120.86	2.0256	0.19	120.87	120.68
03.03.2016 11:53:00	a	120.95	120.91	120.99	120.86	121.05	121.02	121.02	120.99	121.02	120.96	121.04	2.0357	0.19	121.05	120.86
03.03.2016 11:53:02	b	121.12	121.06	121.15	121.02	121.22	121.17	121.19	121.16	121.19	121.14	121.22	2.0453	0.20	121.22	121.02
03.03.2016 11:53:04		121.27	121.20	121.31	121.20	121.38	121.34	121.35	121.33	121.35	121.31	121.38	2.0547	0.18	121.38	121.20
03.03.2016 11:53:06		121.43	121.34	121.46	121.36	121.52	121.50	121.50	121.48	121.49	121.46	121.52	2.0634	0.18	121.52	121.34
03.03.2016 11:53:08		121.57	121.47	121.60	121.51	121.66	121.63	121.65	121.61	121.64	121.59	121.67	2.0721	0.20	121.67	121.47
03.03.2016 11:53:10		121.72	121.60	121.74	121.64	121.79	121.76	121.77	121.75	121.77	121.73	121.81	2.0805	0.21	121.81	121.60

Performed:  
03.03.2016 14:20:27

Created:

Reviewed:

Autoclave Sterilization - No. 1234567

# Raw Data Report

## EN285 - Autoclave Validation

XpertLog 3.6.6 - Licensed to: ITL  
 Imported to Autoclave\_ITLDEMO\_on .\LIVES (19.09.2016 14:44:21)

Virtual Channels:  
 minval=min({#R756};{#R1979};{SR756P})  
 maxval=max({#R756};{#R1979};{SR756P})  
 deltaval=max({#R756};{#R1979};{SR756P})-min({#R756};{#R1979};{SR756P})  
 Equip. Info: EN285 Autoclave; Serial Number: ; Location:

a - [03.03.2016 11:53:00]- Start equilibration  
 b - [03.03.2016 11:53:02]- Stop equilibration; Start holding  
 c - [03.03.2016 11:54:00]- 60 seconds  
 1 - [03.03.2016 12:09:16]- Max Difference  
 d - [03.03.2016 12:13:36]- Stop holding

Date & Time	Action	#R756	SR756P	#R1859	#R1944	#R1945	#R1973	#R1974	#R1975	#R1976	#R1977	#R1979	#R756P	deltaval	maxval	minval
03.03.2016 11:53:12		121.85	121.72	121.86	121.78	121.94	121.90	121.91	121.87	121.90	121.87	121.94	2.0880	0.22	121.94	121.72
03.03.2016 11:53:14		121.96	121.82	121.98	121.89	122.05	122.02	122.03	122.00	122.03	121.98	122.06	2.0950	0.24	122.06	121.82
03.03.2016 11:53:16		122.07	121.92	122.10	122.01	122.16	122.14	122.14	122.10	122.13	122.09	122.16	2.1017	0.24	122.16	121.92
03.03.2016 11:53:18		122.19	122.01	122.19	122.11	122.25	122.22	122.25	122.21	122.24	122.19	122.27	2.1074	0.26	122.27	122.01
03.03.2016 11:53:20		122.28	122.09	122.28	122.22	122.32	122.32	122.33	122.29	122.34	122.28	122.36	2.1126	0.27	122.36	122.09
03.03.2016 11:53:22		122.35	122.14	122.36	122.30	122.40	122.40	122.41	122.37	122.40	122.36	122.44	2.1163	0.30	122.44	122.14
03.03.2016 11:53:24		122.41	122.20	122.42	122.36	122.47	122.47	122.48	122.44	122.46	122.41	122.50	2.1202	0.30	122.50	122.20
03.03.2016 11:53:26		122.47	122.25	122.47	122.41	122.51	122.51	122.53	122.49	122.52	122.47	122.56	2.1230	0.31	122.56	122.25
03.03.2016 11:53:28		122.51	122.29	122.51	122.47	122.55	122.56	122.58	122.53	122.57	122.52	122.60	2.1257	0.31	122.60	122.29
03.03.2016 11:53:30		122.57	122.33	122.56	122.51	122.57	122.60	122.62	122.57	122.61	122.56	122.62	2.1284	0.29	122.62	122.33
03.03.2016 11:53:32		122.60	122.36	122.59	122.55	122.62	122.64	122.64	122.60	122.63	122.58	122.67	2.1309	0.31	122.67	122.36
03.03.2016 11:53:34		122.62	122.40	122.61	122.58	122.64	122.66	122.69	122.63	122.67	122.62	122.70	2.1330	0.30	122.70	122.40
03.03.2016 11:53:36		122.64	122.42	122.64	122.60	122.67	122.70	122.70	122.65	122.69	122.65	122.72	2.1349	0.30	122.72	122.42
03.03.2016 11:53:38		122.67	122.45	122.66	122.64	122.70	122.72	122.73	122.68	122.72	122.67	122.76	2.1369	0.31	122.76	122.45
03.03.2016 11:53:40		122.70	122.48	122.68	122.66	122.71	122.73	122.75	122.69	122.74	122.68	122.77	2.1385	0.29	122.77	122.48
03.03.2016 11:53:42		122.71	122.51	122.70	122.67	122.72	122.75	122.77	122.71	122.75	122.70	122.78	2.1405	0.27	122.78	122.51
03.03.2016 11:53:44		122.74	122.54	122.71	122.69	122.75	122.77	122.79	122.74	122.78	122.72	122.81	2.1425	0.27	122.81	122.54
03.03.2016 11:53:46		122.77	122.57	122.75	122.72	122.77	122.79	122.81	122.76	122.79	122.74	122.83	2.1445	0.26	122.83	122.57
03.03.2016 11:53:48		122.78	122.60	122.76	122.73	122.79	122.81	122.83	122.78	122.81	122.75	122.84	2.1467	0.24	122.84	122.60
03.03.2016 11:53:50		122.81	122.63	122.78	122.75	122.80	122.84	122.85	122.80	122.84	122.79	122.87	2.1488	0.24	122.87	122.63
03.03.2016 11:53:52		122.83	122.66	122.80	122.77	122.83	122.85	122.87	122.82	122.85	122.81	122.89	2.1508	0.23	122.89	122.66
03.03.2016 11:53:54		122.87	122.69	122.83	122.80	122.85	122.87	122.89	122.84	122.88	122.84	122.91	2.1529	0.22	122.91	122.69
03.03.2016 11:53:56		122.88	122.72	122.85	122.81	122.88	122.89	122.91	122.86	122.90	122.86	122.93	2.1550	0.21	122.93	122.72
03.03.2016 11:53:58		122.90	122.75	122.87	122.85	122.89	122.92	122.94	122.88	122.93	122.88	122.95	2.1570	0.20	122.95	122.75
03.03.2016 11:54:00	c	122.92	122.77	122.88	122.86	122.91	122.94	122.95	122.91	122.93	122.88	122.97	2.1583	0.20	122.97	122.77
03.03.2016 11:54:02		122.93	122.80	122.91	122.88	122.93	122.95	122.98	122.93	122.96	122.90	122.99	2.1598	0.19	122.99	122.80
03.03.2016 11:54:04		122.96	122.81	122.91	122.89	122.94	122.97	122.99	122.94	122.97	122.93	123.00	2.1607	0.19	123.00	122.81
03.03.2016 11:54:06		122.97	122.83	122.93	122.90	122.96	122.98	123.00	122.94	122.99	122.94	123.00	2.1618	0.17	123.00	122.83
03.03.2016 11:54:08		122.98	122.84	122.94	122.91	122.95	122.98	123.00	122.95	122.99	122.95	123.03	2.1625	0.19	123.03	122.84
03.03.2016 11:54:10		122.98	122.85	122.94	122.93	122.97	123.00	123.01	122.95	123.00	122.95	123.03	2.1636	0.18	123.03	122.85

Performed:  
 03.03.2016 14:20:27

Created:

Reviewed:

Autoclave Sterilization - No. 1234567

# Raw Data Report

## EN285 - Autoclave Validation

XpertLog 3.6.6 - Licensed to: ITL  
 Imported to Autoclave\_ITLDEMO\_on .\LIVES (19.09.2016 14:44:21)

### Virtual Channels:

minval=min({#R756};{#R1979};{SR756P})  
 maxval=max({#R756};{#R1979};{SR756P})  
 deltaval=max({#R756};{#R1979};{SR756P})-min({#R756};{#R1979};{SR756P})  
 Equip. Info: EN285 Autoclave; Serial Number: ; Location:

a - [03.03.2016 11:53:00]- Start equilibration  
 b - [03.03.2016 11:53:02]- Stop equilibration; Start holding  
 c - [03.03.2016 11:54:00]- 60 seconds  
 1 - [03.03.2016 12:09:16]- Max Difference  
 d - [03.03.2016 12:13:36]- Stop holding

Date & Time	Action	#R756	SR756P	#R1859	#R1944	#R1945	#R1973	#R1974	#R1975	#R1976	#R1977	#R1979	#R756P	deltaval	maxval	minval
03.03.2016 11:54:12		122.99	122.87	122.95	122.92	122.96	123.00	123.01	122.96	123.00	122.95	123.03	2.1646	0.16	123.03	122.87
03.03.2016 11:54:14		122.99	122.88	122.95	122.92	122.97	123.00	123.02	122.97	123.01	122.95	123.04	2.1656	0.16	123.04	122.88
03.03.2016 11:54:16		123.01	122.90	122.95	122.94	122.98	123.01	123.02	122.97	123.02	122.96	123.04	2.1666	0.14	123.04	122.90
03.03.2016 11:54:18		123.02	122.91	122.96	122.93	122.98	123.01	123.03	122.97	123.02	122.96	123.05	2.1678	0.14	123.05	122.91
03.03.2016 11:54:20		123.02	122.93	122.97	122.94	122.99	123.03	123.04	122.99	123.02	122.98	123.06	2.1690	0.13	123.06	122.93
03.03.2016 11:54:22		123.03	122.95	122.98	122.95	123.01	123.04	123.05	123.00	123.05	122.99	123.07	2.1701	0.12	123.07	122.95
03.03.2016 11:54:24		123.05	122.97	122.99	122.96	123.01	123.04	123.06	123.01	123.04	123.00	123.06	2.1715	0.10	123.06	122.96
03.03.2016 11:54:26		123.06	122.99	123.00	122.97	123.02	123.05	123.07	123.02	123.06	123.01	123.08	2.1729	0.11	123.08	122.97
03.03.2016 11:54:28		123.06	123.01	123.00	122.99	123.03	123.05	123.08	123.02	123.06	123.01	123.10	2.1740	0.11	123.10	122.99
03.03.2016 11:54:30		123.08	123.03	123.02	122.99	123.04	123.07	123.09	123.03	123.08	123.03	123.10	2.1753	0.11	123.10	122.99
03.03.2016 11:54:32		123.09	123.04	123.03	123.00	123.05	123.09	123.10	123.04	123.09	123.03	123.11	2.1760	0.11	123.11	123.00
03.03.2016 11:54:34		123.11	123.05	123.04	123.01	123.07	123.10	123.10	123.05	123.10	123.05	123.13	2.1771	0.12	123.13	123.01
03.03.2016 11:54:36		123.12	123.07	123.04	123.02	123.06	123.10	123.11	123.07	123.11	123.06	123.13	2.1781	0.11	123.13	123.02
03.03.2016 11:54:38		123.12	123.08	123.06	123.02	123.07	123.11	123.12	123.08	123.11	123.07	123.14	2.1791	0.12	123.14	123.02
03.03.2016 11:54:40		123.13	123.09	123.05	123.04	123.08	123.11	123.13	123.08	123.11	123.06	123.15	2.1799	0.11	123.15	123.04
03.03.2016 11:54:42		123.13	123.10	123.06	123.05	123.08	123.12	123.13	123.08	123.12	123.07	123.15	2.1805	0.10	123.15	123.05
03.03.2016 11:54:44		123.13	123.11	123.06	123.05	123.09	123.12	123.14	123.07	123.13	123.08	123.16	2.1811	0.11	123.16	123.05
03.03.2016 11:54:46		123.15	123.12	123.06	123.05	123.10	123.12	123.13	123.08	123.13	123.08	123.17	2.1816	0.12	123.17	123.05
03.03.2016 11:54:48		123.13	123.13	123.07	123.06	123.09	123.12	123.15	123.09	123.12	123.08	123.16	2.1823	0.10	123.16	123.06
03.03.2016 11:54:50		123.14	123.13	123.06	123.06	123.10	123.13	123.15	123.09	123.12	123.09	123.15	2.1826	0.09	123.15	123.06
03.03.2016 11:54:52		123.13	123.14	123.07	123.05	123.09	123.12	123.15	123.08	123.12	123.07	123.15	2.1831	0.10	123.15	123.05
03.03.2016 11:54:54		123.14	123.15	123.07	123.05	123.09	123.12	123.14	123.09	123.13	123.08	123.16	2.1838	0.11	123.16	123.05
03.03.2016 11:54:56		123.15	123.15	123.07	123.04	123.09	123.12	123.15	123.09	123.13	123.08	123.16	2.1840	0.12	123.16	123.04
03.03.2016 11:54:58		123.15	123.17	123.07	123.05	123.10	123.13	123.15	123.08	123.12	123.09	123.16	2.1848	0.12	123.17	123.05
03.03.2016 11:55:00		123.14	123.17	123.07	123.05	123.09	123.12	123.14	123.09	123.14	123.08	123.17	2.1853	0.12	123.17	123.05
03.03.2016 11:55:02		123.15	123.18	123.08	123.04	123.09	123.12	123.15	123.10	123.13	123.09	123.15	2.1860	0.14	123.18	123.04
03.03.2016 11:55:04		123.16	123.19	123.08	123.05	123.10	123.14	123.14	123.10	123.14	123.10	123.16	2.1867	0.14	123.19	123.05
03.03.2016 11:55:06		123.16	123.21	123.09	123.05	123.10	123.13	123.16	123.10	123.14	123.09	123.17	2.1878	0.16	123.21	123.05
03.03.2016 11:55:08		123.16	123.22	123.09	123.07	123.11	123.14	123.16	123.10	123.15	123.09	123.17	2.1885	0.15	123.22	123.07
03.03.2016 11:55:10		123.17	123.23	123.08	123.07	123.12	123.14	123.16	123.11	123.15	123.10	123.18	2.1892	0.16	123.23	123.07

Performed:  
 03.03.2016 14:20:27

Created:

Reviewed:

Autoclave Sterilization - No. 1234567

# Raw Data Report

## EN285 - Autoclave Validation

XpertLog 3.6.6 - Licensed to: ITL  
 Imported to Autoclave\_ITLDEMO\_on .\LIVES (19.09.2016 14:44:21)

Virtual Channels:  
 minval=min({#R756};{#R1979};{SR756P})  
 maxval=max({#R756};{#R1979};{SR756P})  
 deltaval=max({#R756};{#R1979};{SR756P})-min({#R756};{#R1979};{SR756P})  
 Equip. Info: EN285 Autoclave; Serial Number: ; Location:

a - [03.03.2016 11:53:00]- Start equilibration  
 b - [03.03.2016 11:53:02]- Stop equilibration; Start holding  
 c - [03.03.2016 11:54:00]- 60 seconds  
 1 - [03.03.2016 12:09:16]- Max Difference  
 d - [03.03.2016 12:13:36]- Stop holding

Date & Time	Action	#R756	SR756P	#R1859	#R1944	#R1945	#R1973	#R1974	#R1975	#R1976	#R1977	#R1979	#R756P	deltaval	maxval	minval
03.03.2016 11:55:12		123.18	123.24	123.10	123.08	123.13	123.14	123.17	123.11	123.15	123.10	123.18	2.1899	0.16	123.24	123.08
03.03.2016 11:55:14		123.18	123.25	123.11	123.09	123.12	123.16	123.17	123.12	123.17	123.12	123.20	2.1907	0.16	123.25	123.09
03.03.2016 11:55:16		123.19	123.26	123.11	123.09	123.12	123.16	123.17	123.12	123.17	123.13	123.19	2.1913	0.17	123.26	123.09
03.03.2016 11:55:18		123.19	123.27	123.11	123.08	123.13	123.16	123.19	123.14	123.18	123.12	123.20	2.1921	0.19	123.27	123.08
03.03.2016 11:55:20		123.20	123.28	123.11	123.10	123.14	123.17	123.19	123.14	123.18	123.12	123.19	2.1928	0.18	123.28	123.10
03.03.2016 11:55:22		123.20	123.29	123.12	123.12	123.13	123.18	123.20	123.15	123.18	123.14	123.21	2.1934	0.17	123.29	123.12
03.03.2016 11:55:24		123.22	123.30	123.12	123.11	123.15	123.18	123.20	123.14	123.19	123.14	123.22	2.1940	0.19	123.30	123.11
03.03.2016 11:55:26		123.22	123.31	123.12	123.11	123.13	123.18	123.20	123.14	123.19	123.14	123.21	2.1946	0.20	123.31	123.11
03.03.2016 11:55:28		123.23	123.32	123.13	123.12	123.16	123.18	123.20	123.15	123.19	123.15	123.22	2.1951	0.20	123.32	123.12
03.03.2016 11:55:30		123.22	123.33	123.13	123.11	123.16	123.19	123.21	123.16	123.20	123.15	123.22	2.1957	0.22	123.33	123.11
03.03.2016 11:55:32		123.24	123.33	123.15	123.12	123.15	123.20	123.22	123.15	123.21	123.15	123.22	2.1962	0.21	123.33	123.12
03.03.2016 11:55:34		123.24	123.34	123.14	123.12	123.16	123.21	123.22	123.17	123.20	123.15	123.23	2.1968	0.22	123.34	123.12
03.03.2016 11:55:36		123.25	123.35	123.15	123.13	123.18	123.20	123.22	123.16	123.20	123.15	123.23	2.1972	0.22	123.35	123.13
03.03.2016 11:55:38		123.25	123.35	123.14	123.13	123.17	123.21	123.22	123.15	123.22	123.17	123.23	2.1974	0.22	123.35	123.13
03.03.2016 11:55:40		123.23	123.36	123.14	123.13	123.16	123.20	123.23	123.18	123.22	123.17	123.24	2.1981	0.23	123.36	123.13
03.03.2016 11:55:42		123.26	123.37	123.16	123.13	123.18	123.21	123.22	123.18	123.21	123.17	123.25	2.1987	0.24	123.37	123.13
03.03.2016 11:55:44		123.25	123.37	123.15	123.14	123.16	123.21	123.23	123.17	123.22	123.16	123.24	2.1990	0.23	123.37	123.14
03.03.2016 11:55:46		123.26	123.38	123.15	123.14	123.18	123.22	123.23	123.18	123.22	123.17	123.24	2.1994	0.24	123.38	123.14
03.03.2016 11:55:48		123.26	123.39	123.16	123.13	123.19	123.20	123.23	123.18	123.21	123.17	123.25	2.1998	0.26	123.39	123.13
03.03.2016 11:55:50		123.26	123.39	123.16	123.14	123.18	123.21	123.23	123.18	123.22	123.17	123.25	2.2002	0.25	123.39	123.14
03.03.2016 11:55:52		123.26	123.40	123.16	123.14	123.18	123.22	123.23	123.18	123.23	123.17	123.25	2.2008	0.26	123.40	123.14
03.03.2016 11:55:54		123.27	123.41	123.16	123.16	123.19	123.23	123.23	123.19	123.22	123.18	123.25	2.2016	0.25	123.41	123.16
03.03.2016 11:55:56		123.28	123.42	123.17	123.16	123.19	123.22	123.24	123.19	123.23	123.17	123.26	2.2022	0.26	123.42	123.16
03.03.2016 11:55:58		123.27	123.43	123.17	123.16	123.19	123.23	123.25	123.19	123.24	123.18	123.26	2.2029	0.27	123.43	123.16
03.03.2016 11:56:00		123.27	123.43	123.19	123.16	123.20	123.24	123.25	123.20	123.24	123.20	123.27	2.2032	0.27	123.43	123.16
03.03.2016 11:56:02		123.29	123.45	123.19	123.16	123.20	123.24	123.26	123.21	123.25	123.19	123.27	2.2040	0.29	123.45	123.16
03.03.2016 11:56:04		123.29	123.46	123.19	123.18	123.21	123.25	123.27	123.22	123.25	123.21	123.28	2.2047	0.28	123.46	123.18
03.03.2016 11:56:06		123.29	123.47	123.20	123.18	123.21	123.26	123.27	123.21	123.26	123.21	123.29	2.2057	0.29	123.47	123.18
03.03.2016 11:56:08		123.30	123.48	123.21	123.19	123.23	123.26	123.27	123.23	123.28	123.22	123.29	2.2062	0.29	123.48	123.19
03.03.2016 11:56:10		123.32	123.49	123.21	123.18	123.23	123.27	123.29	123.22	123.28	123.22	123.30	2.2069	0.31	123.49	123.18

Performed:  
 03.03.2016 14:20:27

Created:

Reviewed:

# Raw Data Report

## EN285 - Autoclave Validation

XpertLog 3.6.6 - Licensed to: ITL  
 Imported to Autoclave\_ITLDEMO\_on .\LIVES (19.09.2016 14:44:21)

### Virtual Channels:

minval=min({#R756};{#R1979};{SR756P})  
 maxval=max({#R756};{#R1979};{SR756P})  
 deltaval=max({#R756};{#R1979};{SR756P})-min({#R756};{#R1979};{SR756P})  
 Equip. Info: EN285 Autoclave; Serial Number: ; Location:

a - [03.03.2016 11:53:00]- Start equilibration  
 b - [03.03.2016 11:53:02]- Stop equilibration; Start holding  
 c - [03.03.2016 11:54:00]- 60 seconds  
 1 - [03.03.2016 12:09:16]- Max Difference  
 d - [03.03.2016 12:13:36]- Stop holding

Date & Time	Action	#R756	SR756P	#R1859	#R1944	#R1945	#R1973	#R1974	#R1975	#R1976	#R1977	#R1979	#R756P	deltaval	maxval	minval
03.03.2016 11:56:12		123.31	123.49	123.22	123.20	123.23	123.28	123.28	123.22	123.28	123.22	123.30	2.2073	0.29	123.49	123.20
03.03.2016 11:56:14		123.33	123.50	123.22	123.20	123.23	123.28	123.29	123.24	123.28	123.23	123.30	2.2078	0.30	123.50	123.20
03.03.2016 11:56:16		123.33	123.51	123.22	123.21	123.24	123.27	123.30	123.25	123.29	123.24	123.31	2.2084	0.30	123.51	123.21
03.03.2016 11:56:18		123.33	123.52	123.23	123.22	123.25	123.29	123.31	123.26	123.30	123.25	123.31	2.2088	0.30	123.52	123.22
03.03.2016 11:56:20		123.33	123.53	123.23	123.22	123.25	123.29	123.31	123.25	123.30	123.25	123.32	2.2094	0.31	123.53	123.22
03.03.2016 11:56:22		123.34	123.53	123.24	123.22	123.26	123.29	123.31	123.26	123.30	123.26	123.32	2.2097	0.31	123.53	123.22
03.03.2016 11:56:24		123.34	123.54	123.25	123.22	123.26	123.30	123.31	123.26	123.31	123.26	123.32	2.2103	0.32	123.54	123.22
03.03.2016 11:56:26		123.35	123.54	123.25	123.23	123.26	123.31	123.31	123.25	123.31	123.25	123.33	2.2107	0.31	123.54	123.23
03.03.2016 11:56:28		123.36	123.55	123.25	123.22	123.26	123.31	123.33	123.27	123.31	123.25	123.33	2.2108	0.33	123.55	123.22
03.03.2016 11:56:30		123.35	123.55	123.24	123.23	123.26	123.30	123.32	123.27	123.31	123.26	123.33	2.2112	0.32	123.55	123.23
03.03.2016 11:56:32		123.36	123.55	123.24	123.23	123.27	123.31	123.32	123.26	123.30	123.27	123.34	2.2114	0.32	123.55	123.23
03.03.2016 11:56:34		123.35	123.55	123.25	123.23	123.26	123.31	123.32	123.27	123.31	123.26	123.33	2.2113	0.32	123.55	123.23
03.03.2016 11:56:36		123.36	123.56	123.24	123.23	123.28	123.31	123.33	123.26	123.31	123.25	123.34	2.2117	0.33	123.56	123.23
03.03.2016 11:56:38		123.35	123.56	123.25	123.23	123.26	123.30	123.32	123.27	123.31	123.25	123.32	2.2119	0.33	123.56	123.23
03.03.2016 11:56:40		123.35	123.56	123.25	123.23	123.26	123.30	123.32	123.26	123.31	123.25	123.34	2.2120	0.33	123.56	123.23
03.03.2016 11:56:42		123.35	123.57	123.25	123.23	123.26	123.30	123.33	123.27	123.31	123.27	123.33	2.2126	0.34	123.57	123.23
03.03.2016 11:56:44		123.36	123.58	123.26	123.24	123.26	123.30	123.33	123.26	123.31	123.26	123.33	2.2130	0.34	123.58	123.24
03.03.2016 11:56:46		123.36	123.58	123.26	123.24	123.27	123.32	123.33	123.26	123.31	123.26	123.34	2.2133	0.34	123.58	123.24
03.03.2016 11:56:48		123.36	123.59	123.26	123.24	123.28	123.31	123.32	123.28	123.31	123.26	123.33	2.2138	0.35	123.59	123.24
03.03.2016 11:56:50		123.36	123.60	123.27	123.25	123.28	123.32	123.33	123.27	123.32	123.26	123.35	2.2143	0.35	123.60	123.25
03.03.2016 11:56:52		123.37	123.60	123.27	123.24	123.28	123.31	123.34	123.28	123.33	123.26	123.35	2.2146	0.36	123.60	123.24
03.03.2016 11:56:54		123.37	123.61	123.26	123.25	123.28	123.32	123.34	123.28	123.33	123.27	123.36	2.2152	0.36	123.61	123.25
03.03.2016 11:56:56		123.38	123.61	123.27	123.26	123.28	123.32	123.34	123.27	123.34	123.29	123.36	2.2155	0.35	123.61	123.26
03.03.2016 11:56:58		123.39	123.62	123.28	123.26	123.29	123.34	123.34	123.29	123.34	123.29	123.37	2.2160	0.36	123.62	123.26
03.03.2016 11:57:00		123.39	123.62	123.27	123.26	123.29	123.33	123.36	123.29	123.33	123.28	123.36	2.2161	0.36	123.62	123.26
03.03.2016 11:57:02		123.39	123.63	123.27	123.25	123.29	123.33	123.35	123.31	123.34	123.29	123.36	2.2164	0.38	123.63	123.25
03.03.2016 11:57:04		123.39	123.63	123.28	123.26	123.30	123.34	123.37	123.30	123.35	123.29	123.37	2.2166	0.37	123.63	123.26
03.03.2016 11:57:06		123.39	123.63	123.28	123.26	123.29	123.34	123.36	123.31	123.34	123.29	123.37	2.2169	0.37	123.63	123.26
03.03.2016 11:57:08		123.40	123.64	123.29	123.27	123.29	123.33	123.36	123.31	123.35	123.29	123.38	2.2170	0.37	123.64	123.27
03.03.2016 11:57:10		123.39	123.64	123.29	123.27	123.29	123.35	123.36	123.31	123.36	123.29	123.38	2.2175	0.37	123.64	123.27

Performed:  
 03.03.2016 14:20:27

Created:

Reviewed:

Autoclave Sterilization - No. 1234567

# Raw Data Report

## EN285 - Autoclave Validation

XpertLog 3.6.6 - Licensed to: ITL  
 Imported to Autoclave\_ITLDEMO\_on .\LIVES (19.09.2016 14:44:21)

Virtual Channels:  
 minval=min({#R756};{#R1979};{SR756P})  
 maxval=max({#R756};{#R1979};{SR756P})  
 deltaval=max({#R756};{#R1979};{SR756P})-min({#R756};{#R1979};{SR756P})  
 Equip. Info: EN285 Autoclave; Serial Number: ; Location:

a - [03.03.2016 11:53:00]- Start equilibration  
 b - [03.03.2016 11:53:02]- Stop equilibration; Start holding  
 c - [03.03.2016 11:54:00]- 60 seconds  
 1 - [03.03.2016 12:09:16]- Max Difference  
 d - [03.03.2016 12:13:36]- Stop holding

Date & Time	Action	#R756	SR756P	#R1859	#R1944	#R1945	#R1973	#R1974	#R1975	#R1976	#R1977	#R1979	#R756P	deltaval	maxval	minval
03.03.2016 11:57:12		123.39	123.64	123.28	123.26	123.29	123.34	123.35	123.30	123.35	123.29	123.36	2.2174	0.38	123.64	123.26
03.03.2016 11:57:14		123.39	123.64	123.29	123.27	123.30	123.34	123.37	123.30	123.36	123.30	123.37	2.2172	0.37	123.64	123.27
03.03.2016 11:57:16		123.40	123.64	123.29	123.26	123.29	123.34	123.36	123.30	123.35	123.30	123.37	2.2174	0.38	123.64	123.26
03.03.2016 11:57:18		123.39	123.64	123.28	123.26	123.29	123.34	123.35	123.30	123.35	123.29	123.37	2.2171	0.38	123.64	123.26
03.03.2016 11:57:20		123.39	123.64	123.27	123.27	123.28	123.34	123.35	123.29	123.35	123.28	123.37	2.2170	0.37	123.64	123.27
03.03.2016 11:57:22		123.39	123.64	123.28	123.25	123.28	123.33	123.36	123.29	123.34	123.28	123.36	2.2170	0.39	123.64	123.25
03.03.2016 11:57:24		123.38	123.63	123.27	123.25	123.29	123.32	123.35	123.28	123.34	123.27	123.36	2.2168	0.38	123.63	123.25
03.03.2016 11:57:26		123.38	123.63	123.27	123.25	123.27	123.32	123.35	123.29	123.34	123.27	123.36	2.2166	0.38	123.63	123.25
03.03.2016 11:57:28		123.37	123.63	123.25	123.25	123.27	123.31	123.34	123.28	123.32	123.26	123.35	2.2164	0.38	123.63	123.25
03.03.2016 11:57:30		123.37	123.62	123.25	123.23	123.26	123.31	123.33	123.27	123.31	123.26	123.33	2.2162	0.39	123.62	123.23
03.03.2016 11:57:32		123.36	123.62	123.25	123.24	123.25	123.30	123.33	123.26	123.31	123.26	123.33	2.2160	0.38	123.62	123.24
03.03.2016 11:57:34		123.35	123.62	123.24	123.23	123.25	123.28	123.32	123.26	123.32	123.25	123.32	2.2160	0.39	123.62	123.23
03.03.2016 11:57:36		123.35	123.62	123.23	123.22	123.26	123.30	123.31	123.24	123.31	123.24	123.33	2.2156	0.40	123.62	123.22
03.03.2016 11:57:38		123.35	123.61	123.23	123.22	123.24	123.29	123.31	123.25	123.30	123.24	123.32	2.2154	0.39	123.61	123.22
03.03.2016 11:57:40		123.34	123.62	123.23	123.22	123.25	123.29	123.31	123.25	123.31	123.24	123.31	2.2157	0.40	123.62	123.22
03.03.2016 11:57:42		123.35	123.62	123.23	123.21	123.23	123.28	123.30	123.24	123.30	123.23	123.32	2.2156	0.41	123.62	123.21
03.03.2016 11:57:44		123.34	123.62	123.24	123.21	123.23	123.27	123.30	123.24	123.29	123.23	123.31	2.2158	0.41	123.62	123.21
03.03.2016 11:57:46		123.34	123.62	123.22	123.21	123.23	123.28	123.30	123.23	123.29	123.23	123.31	2.2157	0.41	123.62	123.21
03.03.2016 11:57:48		123.34	123.62	123.22	123.20	123.24	123.29	123.29	123.24	123.30	123.23	123.30	2.2159	0.42	123.62	123.20
03.03.2016 11:57:50		123.34	123.62	123.23	123.21	123.23	123.28	123.30	123.24	123.29	123.22	123.31	2.2161	0.41	123.62	123.21
03.03.2016 11:57:52		123.34	123.60	123.22	123.21	123.23	123.28	123.30	123.24	123.29	123.23	123.30	2.2148	0.39	123.60	123.21
03.03.2016 11:57:54		123.34	123.60	123.23	123.21	123.24	123.28	123.29	123.23	123.30	123.23	123.30	2.2147	0.39	123.60	123.21
03.03.2016 11:57:56		123.34	123.61	123.22	123.22	123.23	123.28	123.31	123.23	123.29	123.23	123.31	2.2149	0.39	123.61	123.22
03.03.2016 11:57:58		123.35	123.60	123.21	123.21	123.22	123.27	123.29	123.24	123.29	123.22	123.29	2.2148	0.39	123.60	123.21
03.03.2016 11:58:00		123.33	123.61	123.22	123.20	123.23	123.27	123.29	123.24	123.28	123.24	123.29	2.2150	0.41	123.61	123.20
03.03.2016 11:58:02		123.34	123.61	123.22	123.21	123.23	123.27	123.30	123.23	123.29	123.23	123.30	2.2150	0.40	123.61	123.21
03.03.2016 11:58:04		123.33	123.61	123.23	123.21	123.22	123.28	123.29	123.23	123.28	123.22	123.29	2.2149	0.40	123.61	123.21
03.03.2016 11:58:06		123.34	123.60	123.21	123.20	123.23	123.28	123.30	123.23	123.28	123.21	123.30	2.2146	0.40	123.60	123.20
03.03.2016 11:58:08		123.32	123.60	123.22	123.20	123.23	123.27	123.29	123.23	123.27	123.23	123.30	2.2148	0.40	123.60	123.20
03.03.2016 11:58:10		123.34	123.62	123.21	123.20	123.22	123.27	123.28	123.23	123.27	123.22	123.31	2.2160	0.42	123.62	123.20

Performed:  
 03.03.2016 14:20:27

Created:

Reviewed:

# Raw Data Report

## EN285 - Autoclave Validation

XpertLog 3.6.6 - Licensed to: ITL  
 Imported to Autoclave\_ITLDEMO\_on .\LIVES (19.09.2016 14:44:21)

### Virtual Channels:

minval=min({#R756};{#R1979};{SR756P})  
 maxval=max({#R756};{#R1979};{SR756P})  
 deltaval=max({#R756};{#R1979};{SR756P})-min({#R756};{#R1979};{SR756P})  
 Equip. Info: EN285 Autoclave; Serial Number: ; Location:

- a - [03.03.2016 11:53:00]- Start equilibration
- b - [03.03.2016 11:53:02]- Stop equilibration; Start holding
- c - [03.03.2016 11:54:00]- 60 seconds
- 1 - [03.03.2016 12:09:16]- Max Difference
- d - [03.03.2016 12:13:36]- Stop holding

Date & Time	Action	#R756	SR756P	#R1859	#R1944	#R1945	#R1973	#R1974	#R1975	#R1976	#R1977	#R1979	#R756P	deltaval	maxval	minval
03.03.2016 11:58:12		123.32	123.62	123.21	123.19	123.23	123.26	123.29	123.24	123.29	123.22	123.29	2.2162	0.43	123.62	123.19
03.03.2016 11:58:14		123.33	123.63	123.21	123.19	123.22	123.26	123.28	123.22	123.27	123.21	123.29	2.2163	0.44	123.63	123.19
03.03.2016 11:58:16		123.32	123.61	123.20	123.20	123.22	123.26	123.28	123.22	123.26	123.22	123.29	2.2150	0.41	123.61	123.20
03.03.2016 11:58:18		123.33	123.61	123.21	123.19	123.21	123.26	123.28	123.22	123.27	123.21	123.30	2.2151	0.42	123.61	123.19
03.03.2016 11:58:20		123.32	123.61	123.20	123.20	123.21	123.26	123.28	123.22	123.27	123.21	123.29	2.2151	0.41	123.61	123.20
03.03.2016 11:58:22		123.32	123.61	123.21	123.19	123.20	123.26	123.28	123.23	123.27	123.21	123.28	2.2152	0.42	123.61	123.19
03.03.2016 11:58:24		123.31	123.61	123.20	123.19	123.20	123.25	123.27	123.22	123.26	123.21	123.28	2.2150	0.42	123.61	123.19
03.03.2016 11:58:26		123.31	123.61	123.20	123.18	123.20	123.25	123.28	123.21	123.26	123.21	123.28	2.2152	0.43	123.61	123.18
03.03.2016 11:58:28		123.31	123.61	123.19	123.19	123.21	123.25	123.27	123.20	123.27	123.21	123.28	2.2151	0.42	123.61	123.19
03.03.2016 11:58:30		123.31	123.61	123.20	123.18	123.20	123.26	123.27	123.21	123.26	123.20	123.28	2.2151	0.43	123.61	123.18
03.03.2016 11:58:32		123.31	123.61	123.19	123.18	123.20	123.24	123.26	123.21	123.26	123.19	123.27	2.2154	0.43	123.61	123.18
03.03.2016 11:58:34		123.31	123.62	123.20	123.17	123.19	123.25	123.27	123.20	123.26	123.20	123.27	2.2158	0.45	123.62	123.17
03.03.2016 11:58:36		123.32	123.62	123.21	123.18	123.20	123.26	123.27	123.22	123.26	123.20	123.28	2.2162	0.44	123.62	123.18
03.03.2016 11:58:38		123.32	123.63	123.20	123.18	123.21	123.25	123.28	123.22	123.26	123.21	123.29	2.2166	0.45	123.63	123.18
03.03.2016 11:58:40		123.32	123.64	123.21	123.19	123.22	123.26	123.27	123.22	123.27	123.22	123.29	2.2172	0.45	123.64	123.19
03.03.2016 11:58:42		123.33	123.65	123.22	123.20	123.23	123.27	123.29	123.23	123.28	123.22	123.30	2.2178	0.45	123.65	123.20
03.03.2016 11:58:44		123.34	123.65	123.22	123.20	123.23	123.27	123.29	123.23	123.29	123.23	123.30	2.2183	0.45	123.65	123.20
03.03.2016 11:58:46		123.34	123.66	123.23	123.20	123.24	123.28	123.31	123.25	123.29	123.24	123.31	2.2187	0.46	123.66	123.20
03.03.2016 11:58:48		123.35	123.67	123.23	123.22	123.25	123.29	123.31	123.25	123.31	123.23	123.31	2.2192	0.45	123.67	123.22
03.03.2016 11:58:50		123.36	123.67	123.24	123.22	123.25	123.29	123.31	123.25	123.31	123.24	123.32	2.2195	0.45	123.67	123.22
03.03.2016 11:58:52		123.36	123.68	123.25	123.22	123.25	123.30	123.32	123.27	123.31	123.24	123.33	2.2200	0.46	123.68	123.22
03.03.2016 11:58:54		123.36	123.69	123.25	123.23	123.25	123.31	123.33	123.26	123.31	123.25	123.33	2.2204	0.46	123.69	123.23
03.03.2016 11:58:56		123.38	123.69	123.26	123.24	123.27	123.31	123.33	123.28	123.32	123.26	123.34	2.2207	0.45	123.69	123.24
03.03.2016 11:58:58		123.38	123.69	123.26	123.24	123.26	123.31	123.34	123.27	123.33	123.27	123.34	2.2210	0.45	123.69	123.24
03.03.2016 11:59:00		123.38	123.70	123.26	123.25	123.27	123.31	123.33	123.28	123.33	123.25	123.35	2.2212	0.45	123.70	123.25
03.03.2016 11:59:02		123.38	123.70	123.26	123.25	123.28	123.32	123.34	123.29	123.32	123.26	123.35	2.2214	0.45	123.70	123.25
03.03.2016 11:59:04		123.39	123.70	123.26	123.24	123.27	123.33	123.35	123.28	123.34	123.28	123.35	2.2217	0.46	123.70	123.24
03.03.2016 11:59:06		123.39	123.71	123.28	123.26	123.28	123.33	123.35	123.28	123.33	123.28	123.35	2.2221	0.45	123.71	123.26
03.03.2016 11:59:08		123.40	123.71	123.27	123.26	123.28	123.32	123.34	123.28	123.34	123.28	123.36	2.2219	0.45	123.71	123.26
03.03.2016 11:59:10		123.39	123.71	123.27	123.26	123.28	123.33	123.36	123.29	123.34	123.28	123.36	2.2222	0.45	123.71	123.26

Performed:  
 03.03.2016 14:20:27

Created:

Reviewed:



# Raw Data Report

## EN285 - Autoclave Validation

XpertLog 3.6.6 - Licensed to: ITL  
 Imported to Autoclave\_ITLDEMO\_on .\LIVES (19.09.2016 14:44:21)

Virtual Channels:  
 minval=min({#R756};{#R1979};{SR756P})  
 maxval=max({#R756};{#R1979};{SR756P})  
 deltaval=max({#R756};{#R1979};{SR756P})-min({#R756};{#R1979};{SR756P})  
 Equip. Info: EN285 Autoclave; Serial Number: ; Location:

a - [03.03.2016 11:53:00]- Start equilibration  
 b - [03.03.2016 11:53:02]- Stop equilibration; Start holding  
 c - [03.03.2016 11:54:00]- 60 seconds  
 1 - [03.03.2016 12:09:16]- Max Difference  
 d - [03.03.2016 12:13:36]- Stop holding

Date & Time	Action	#R756	SR756P	#R1859	#R1944	#R1945	#R1973	#R1974	#R1975	#R1976	#R1977	#R1979	#R756P	deltaval	maxval	minval
03.03.2016 11:59:12		123.39	123.71	123.27	123.26	123.29	123.34	123.35	123.30	123.34	123.28	123.37	2.2221	0.45	123.71	123.26
03.03.2016 11:59:14		123.39	123.71	123.28	123.26	123.29	123.33	123.35	123.30	123.35	123.29	123.36	2.2223	0.45	123.71	123.26
03.03.2016 11:59:16		123.40	123.71	123.28	123.26	123.29	123.34	123.35	123.29	123.35	123.29	123.37	2.2223	0.45	123.71	123.26
03.03.2016 11:59:18		123.39	123.72	123.28	123.26	123.28	123.33	123.36	123.29	123.35	123.28	123.36	2.2227	0.46	123.72	123.26
03.03.2016 11:59:20		123.39	123.73	123.28	123.26	123.29	123.33	123.35	123.30	123.34	123.29	123.35	2.2234	0.47	123.73	123.26
03.03.2016 11:59:22		123.41	123.73	123.27	123.26	123.28	123.34	123.36	123.30	123.35	123.29	123.37	2.2234	0.47	123.73	123.26
03.03.2016 11:59:24		123.40	123.73	123.28	123.26	123.28	123.33	123.37	123.30	123.34	123.29	123.37	2.2235	0.47	123.73	123.26
03.03.2016 11:59:26		123.40	123.74	123.28	123.26	123.28	123.32	123.36	123.30	123.35	123.29	123.36	2.2243	0.48	123.74	123.26
03.03.2016 11:59:28		123.40	123.75	123.27	123.26	123.29	123.34	123.36	123.30	123.35	123.29	123.37	2.2246	0.49	123.75	123.26
03.03.2016 11:59:30		123.40	123.75	123.28	123.26	123.28	123.33	123.36	123.30	123.34	123.30	123.36	2.2249	0.49	123.75	123.26
03.03.2016 11:59:32		123.40	123.75	123.28	123.26	123.29	123.33	123.37	123.30	123.36	123.29	123.38	2.2251	0.49	123.75	123.26
03.03.2016 11:59:34		123.41	123.75	123.29	123.26	123.29	123.34	123.36	123.31	123.35	123.30	123.37	2.2248	0.49	123.75	123.26
03.03.2016 11:59:36		123.40	123.76	123.29	123.27	123.31	123.34	123.36	123.30	123.36	123.30	123.37	2.2255	0.49	123.76	123.27
03.03.2016 11:59:38		123.41	123.74	123.29	123.27	123.31	123.35	123.36	123.31	123.35	123.29	123.38	2.2244	0.47	123.74	123.27
03.03.2016 11:59:40		123.42	123.74	123.30	123.28	123.30	123.35	123.37	123.31	123.36	123.31	123.37	2.2245	0.46	123.74	123.28
03.03.2016 11:59:42		123.41	123.75	123.30	123.28	123.30	123.36	123.37	123.32	123.36	123.30	123.38	2.2248	0.47	123.75	123.28
03.03.2016 11:59:44		123.41	123.75	123.30	123.29	123.30	123.35	123.38	123.31	123.36	123.31	123.39	2.2252	0.46	123.75	123.29
03.03.2016 11:59:46		123.42	123.75	123.30	123.28	123.31	123.36	123.38	123.32	123.36	123.30	123.38	2.2252	0.47	123.75	123.28
03.03.2016 11:59:48		123.42	123.75	123.30	123.29	123.30	123.36	123.38	123.32	123.37	123.31	123.40	2.2252	0.46	123.75	123.29
03.03.2016 11:59:50		123.43	123.76	123.31	123.29	123.31	123.36	123.39	123.33	123.36	123.31	123.40	2.2253	0.47	123.76	123.29
03.03.2016 11:59:52		123.42	123.76	123.30	123.29	123.31	123.36	123.38	123.32	123.37	123.31	123.39	2.2254	0.47	123.76	123.29
03.03.2016 11:59:54		123.42	123.75	123.30	123.29	123.31	123.36	123.38	123.32	123.37	123.31	123.39	2.2252	0.46	123.75	123.29
03.03.2016 11:59:56		123.42	123.76	123.30	123.28	123.31	123.35	123.38	123.32	123.37	123.31	123.40	2.2253	0.48	123.76	123.28
03.03.2016 11:59:58		123.43	123.75	123.30	123.29	123.31	123.36	123.38	123.32	123.37	123.32	123.38	2.2251	0.46	123.75	123.29
03.03.2016 12:00:00		123.42	123.76	123.30	123.29	123.31	123.36	123.39	123.31	123.36	123.31	123.39	2.2253	0.47	123.76	123.29
03.03.2016 12:00:02		123.41	123.75	123.30	123.29	123.31	123.35	123.38	123.31	123.38	123.30	123.39	2.2252	0.46	123.75	123.29
03.03.2016 12:00:04		123.42	123.76	123.30	123.29	123.31	123.37	123.38	123.32	123.37	123.30	123.38	2.2253	0.47	123.76	123.29
03.03.2016 12:00:06		123.42	123.76	123.30	123.29	123.31	123.36	123.38	123.32	123.37	123.31	123.38	2.2256	0.47	123.76	123.29
03.03.2016 12:00:08		123.43	123.77	123.30	123.29	123.30	123.36	123.38	123.33	123.37	123.30	123.39	2.2260	0.48	123.77	123.29
03.03.2016 12:00:10		123.43	123.77	123.30	123.29	123.31	123.36	123.39	123.32	123.36	123.31	123.40	2.2262	0.48	123.77	123.29

Performed:  
 03.03.2016 14:20:27

Created:

Reviewed:

# Raw Data Report

## EN285 - Autoclave Validation

XpertLog 3.6.6 - Licensed to: ITL  
 Imported to Autoclave\_ITLDEMO\_on .\LIVES (19.09.2016 14:44:21)

### Virtual Channels:

minval=min({#R756};{#R1979};{SR756P})  
 maxval=max({#R756};{#R1979};{SR756P})  
 deltaval=max({#R756};{#R1979};{SR756P})-min({#R756};{#R1979};{SR756P})  
 Equip. Info: EN285 Autoclave; Serial Number: ; Location:

a - [03.03.2016 11:53:00]- Start equilibration  
 b - [03.03.2016 11:53:02]- Stop equilibration; Start holding  
 c - [03.03.2016 11:54:00]- 60 seconds  
 1 - [03.03.2016 12:09:16]- Max Difference  
 d - [03.03.2016 12:13:36]- Stop holding

Date & Time	Action	#R756	SR756P	#R1859	#R1944	#R1945	#R1973	#R1974	#R1975	#R1976	#R1977	#R1979	#R756P	deltaval	maxval	minval
03.03.2016 12:00:12		123.43	123.77	123.31	123.28	123.32	123.36	123.39	123.32	123.38	123.31	123.39	2.2263	0.49	123.77	123.28
03.03.2016 12:00:14		123.43	123.78	123.30	123.30	123.32	123.36	123.38	123.32	123.38	123.30	123.39	2.2267	0.48	123.78	123.30
03.03.2016 12:00:16		123.43	123.78	123.31	123.29	123.32	123.37	123.39	123.32	123.38	123.31	123.40	2.2267	0.49	123.78	123.29
03.03.2016 12:00:18		123.44	123.78	123.31	123.29	123.32	123.37	123.39	123.33	123.38	123.32	123.40	2.2270	0.49	123.78	123.29
03.03.2016 12:00:20		123.44	123.78	123.33	123.30	123.31	123.37	123.40	123.34	123.38	123.32	123.40	2.2270	0.48	123.78	123.30
03.03.2016 12:00:22		123.44	123.78	123.32	123.31	123.32	123.37	123.39	123.33	123.38	123.32	123.40	2.2271	0.47	123.78	123.31
03.03.2016 12:00:24		123.44	123.78	123.32	123.31	123.32	123.37	123.39	123.33	123.39	123.33	123.41	2.2272	0.47	123.78	123.31
03.03.2016 12:00:26		123.44	123.79	123.32	123.30	123.33	123.37	123.39	123.34	123.38	123.32	123.41	2.2273	0.49	123.79	123.30
03.03.2016 12:00:28		123.44	123.79	123.33	123.30	123.33	123.38	123.40	123.34	123.39	123.33	123.41	2.2275	0.49	123.79	123.30
03.03.2016 12:00:30		123.45	123.79	123.31	123.30	123.32	123.37	123.41	123.34	123.39	123.32	123.41	2.2274	0.49	123.79	123.30
03.03.2016 12:00:32		123.45	123.79	123.32	123.30	123.33	123.37	123.40	123.33	123.40	123.32	123.39	2.2275	0.49	123.79	123.30
03.03.2016 12:00:34		123.45	123.78	123.32	123.30	123.32	123.37	123.39	123.34	123.40	123.32	123.40	2.2272	0.48	123.78	123.30
03.03.2016 12:00:36		123.44	123.78	123.32	123.30	123.33	123.37	123.40	123.34	123.39	123.33	123.40	2.2272	0.48	123.78	123.30
03.03.2016 12:00:38		123.44	123.78	123.32	123.31	123.32	123.37	123.40	123.33	123.39	123.32	123.41	2.2270	0.47	123.78	123.31
03.03.2016 12:00:40		123.44	123.79	123.31	123.30	123.32	123.37	123.40	123.34	123.39	123.33	123.41	2.2273	0.49	123.79	123.30
03.03.2016 12:00:42		123.44	123.78	123.32	123.31	123.32	123.38	123.39	123.33	123.38	123.33	123.40	2.2270	0.47	123.78	123.31
03.03.2016 12:00:44		123.44	123.77	123.32	123.31	123.32	123.38	123.39	123.33	123.38	123.32	123.40	2.2266	0.46	123.77	123.31
03.03.2016 12:00:46		123.44	123.77	123.31	123.29	123.32	123.37	123.39	123.33	123.38	123.32	123.39	2.2263	0.48	123.77	123.29
03.03.2016 12:00:48		123.43	123.77	123.31	123.29	123.30	123.37	123.39	123.32	123.39	123.31	123.40	2.2265	0.48	123.77	123.29
03.03.2016 12:00:50		123.42	123.77	123.30	123.29	123.31	123.36	123.39	123.32	123.37	123.31	123.39	2.2263	0.48	123.77	123.29
03.03.2016 12:00:52		123.42	123.76	123.31	123.29	123.30	123.36	123.38	123.31	123.37	123.31	123.38	2.2257	0.47	123.76	123.29
03.03.2016 12:00:54		123.41	123.76	123.30	123.28	123.30	123.34	123.38	123.32	123.35	123.30	123.38	2.2257	0.48	123.76	123.28
03.03.2016 12:00:56		123.42	123.76	123.30	123.28	123.30	123.35	123.36	123.31	123.36	123.29	123.38	2.2259	0.48	123.76	123.28
03.03.2016 12:00:58		123.41	123.76	123.29	123.28	123.29	123.35	123.36	123.31	123.36	123.30	123.37	2.2256	0.48	123.76	123.28
03.03.2016 12:01:00		123.41	123.76	123.30	123.27	123.30	123.34	123.36	123.31	123.36	123.29	123.37	2.2258	0.49	123.76	123.27
03.03.2016 12:01:02		123.41	123.76	123.28	123.27	123.29	123.34	123.36	123.30	123.35	123.29	123.37	2.2258	0.49	123.76	123.27
03.03.2016 12:01:04		123.42	123.76	123.29	123.27	123.29	123.34	123.36	123.30	123.35	123.30	123.38	2.2259	0.49	123.76	123.27
03.03.2016 12:01:06		123.42	123.77	123.28	123.27	123.29	123.34	123.35	123.31	123.35	123.29	123.37	2.2265	0.50	123.77	123.27
03.03.2016 12:01:08		123.41	123.78	123.28	123.27	123.29	123.34	123.36	123.30	123.35	123.29	123.38	2.2267	0.51	123.78	123.27
03.03.2016 12:01:10		123.42	123.78	123.29	123.28	123.29	123.34	123.36	123.30	123.36	123.29	123.36	2.2269	0.50	123.78	123.28

Performed:  
 03.03.2016 14:20:27

Created:

Reviewed:

# Raw Data Report

## EN285 - Autoclave Validation

XpertLog 3.6.6 - Licensed to: ITL  
 Imported to Autoclave\_ITLDEMO\_on .\LIVES (19.09.2016 14:44:21)

Virtual Channels:  
 minval=min({#R756};{#R1979};{SR756P})  
 maxval=max({#R756};{#R1979};{SR756P})  
 deltaval=max({#R756};{#R1979};{SR756P})-min({#R756};{#R1979};{SR756P})  
 Equip. Info: EN285 Autoclave; Serial Number: ; Location:

a - [03.03.2016 11:53:00]- Start equilibration  
 b - [03.03.2016 11:53:02]- Stop equilibration; Start holding  
 c - [03.03.2016 11:54:00]- 60 seconds  
 1 - [03.03.2016 12:09:16]- Max Difference  
 d - [03.03.2016 12:13:36]- Stop holding

Date & Time	Action	#R756	SR756P	#R1859	#R1944	#R1945	#R1973	#R1974	#R1975	#R1976	#R1977	#R1979	#R756P	deltaval	maxval	minval
03.03.2016 12:01:12		123.41	123.78	123.28	123.27	123.30	123.34	123.37	123.30	123.35	123.29	123.37	2.2270	0.51	123.78	123.27
03.03.2016 12:01:14		123.41	123.78	123.28	123.28	123.29	123.34	123.35	123.30	123.35	123.29	123.36	2.2269	0.50	123.78	123.28
03.03.2016 12:01:16		123.40	123.78	123.29	123.27	123.29	123.34	123.36	123.30	123.36	123.29	123.38	2.2270	0.51	123.78	123.27
03.03.2016 12:01:18		123.41	123.78	123.28	123.28	123.28	123.34	123.36	123.30	123.35	123.30	123.37	2.2269	0.50	123.78	123.28
03.03.2016 12:01:20		123.41	123.78	123.28	123.28	123.29	123.34	123.36	123.30	123.35	123.30	123.37	2.2272	0.50	123.78	123.28
03.03.2016 12:01:22		123.40	123.78	123.29	123.27	123.29	123.35	123.36	123.30	123.35	123.29	123.37	2.2272	0.51	123.78	123.27
03.03.2016 12:01:24		123.41	123.78	123.28	123.26	123.29	123.34	123.37	123.30	123.36	123.29	123.36	2.2268	0.52	123.78	123.26
03.03.2016 12:01:26		123.40	123.78	123.28	123.27	123.29	123.33	123.36	123.30	123.35	123.29	123.37	2.2269	0.51	123.78	123.27
03.03.2016 12:01:28		123.39	123.78	123.28	123.26	123.28	123.33	123.35	123.30	123.35	123.30	123.36	2.2270	0.52	123.78	123.26
03.03.2016 12:01:30		123.40	123.78	123.29	123.27	123.29	123.34	123.35	123.30	123.35	123.28	123.37	2.2269	0.51	123.78	123.27
03.03.2016 12:01:32		123.40	123.77	123.28	123.26	123.28	123.33	123.35	123.29	123.36	123.28	123.36	2.2265	0.51	123.77	123.26
03.03.2016 12:01:34		123.40	123.77	123.27	123.27	123.28	123.33	123.35	123.30	123.35	123.27	123.36	2.2265	0.50	123.77	123.27
03.03.2016 12:01:36		123.40	123.77	123.28	123.26	123.28	123.33	123.36	123.29	123.34	123.27	123.37	2.2264	0.51	123.77	123.26
03.03.2016 12:01:38		123.40	123.76	123.28	123.26	123.27	123.33	123.35	123.29	123.33	123.28	123.37	2.2257	0.50	123.76	123.26
03.03.2016 12:01:40		123.40	123.77	123.28	123.26	123.27	123.33	123.35	123.28	123.33	123.27	123.35	2.2260	0.51	123.77	123.26
03.03.2016 12:01:42		123.40	123.76	123.27	123.25	123.27	123.32	123.35	123.28	123.33	123.27	123.36	2.2254	0.51	123.76	123.25
03.03.2016 12:01:44		123.40	123.76	123.27	123.25	123.27	123.33	123.34	123.28	123.33	123.27	123.35	2.2256	0.51	123.76	123.25
03.03.2016 12:01:46		123.39	123.75	123.27	123.25	123.26	123.32	123.33	123.28	123.33	123.26	123.36	2.2247	0.50	123.75	123.25
03.03.2016 12:01:48		123.39	123.75	123.26	123.23	123.26	123.32	123.34	123.27	123.33	123.26	123.34	2.2248	0.52	123.75	123.23
03.03.2016 12:01:50		123.39	123.76	123.26	123.25	123.27	123.31	123.34	123.26	123.34	123.27	123.34	2.2256	0.51	123.76	123.25
03.03.2016 12:01:52		123.38	123.75	123.26	123.24	123.26	123.31	123.33	123.27	123.31	123.26	123.35	2.2252	0.51	123.75	123.24
03.03.2016 12:01:54		123.39	123.75	123.26	123.25	123.27	123.31	123.32	123.27	123.33	123.26	123.34	2.2249	0.50	123.75	123.25
03.03.2016 12:01:56		123.39	123.75	123.26	123.25	123.26	123.30	123.33	123.27	123.32	123.25	123.35	2.2249	0.50	123.75	123.25
03.03.2016 12:01:58		123.38	123.76	123.26	123.24	123.26	123.32	123.34	123.27	123.32	123.27	123.33	2.2255	0.52	123.76	123.24
03.03.2016 12:02:00		123.38	123.76	123.26	123.24	123.27	123.31	123.33	123.26	123.32	123.26	123.35	2.2254	0.52	123.76	123.24
03.03.2016 12:02:02		123.39	123.76	123.25	123.24	123.26	123.30	123.33	123.27	123.32	123.26	123.34	2.2258	0.52	123.76	123.24
03.03.2016 12:02:04		123.39	123.76	123.26	123.25	123.26	123.32	123.33	123.28	123.33	123.26	123.34	2.2258	0.51	123.76	123.25
03.03.2016 12:02:06		123.39	123.76	123.26	123.25	123.27	123.32	123.34	123.27	123.33	123.26	123.34	2.2254	0.51	123.76	123.25
03.03.2016 12:02:08		123.38	123.76	123.26	123.24	123.26	123.32	123.33	123.27	123.32	123.25	123.34	2.2259	0.52	123.76	123.24
03.03.2016 12:02:10		123.39	123.76	123.26	123.24	123.27	123.32	123.34	123.28	123.33	123.27	123.36	2.2257	0.52	123.76	123.24

Performed:  
 03.03.2016 14:20:27

Created:

Reviewed:

Autoclave Sterilization - No. 1234567

# Raw Data Report

## EN285 - Autoclave Validation

XpertLog 3.6.6 - Licensed to: ITL  
 Imported to Autoclave\_ITLDEMO\_on .\LIVES (19.09.2016 14:44:21)

### Virtual Channels:

minval=min({#R756};{#R1979};{SR756P})  
 maxval=max({#R756};{#R1979};{SR756P})  
 deltaval=max({#R756};{#R1979};{SR756P})-min({#R756};{#R1979};{SR756P})  
 Equip. Info: EN285 Autoclave; Serial Number: ; Location:

a - [03.03.2016 11:53:00]- Start equilibration  
 b - [03.03.2016 11:53:02]- Stop equilibration; Start holding  
 c - [03.03.2016 11:54:00]- 60 seconds  
 1 - [03.03.2016 12:09:16]- Max Difference  
 d - [03.03.2016 12:13:36]- Stop holding

Date & Time	Action	#R756	SR756P	#R1859	#R1944	#R1945	#R1973	#R1974	#R1975	#R1976	#R1977	#R1979	#R756P	deltaval	maxval	minval
03.03.2016 12:02:12		123.39	123.77	123.26	123.25	123.26	123.32	123.35	123.27	123.32	123.27	123.35	2.2260	0.52	123.77	123.25
03.03.2016 12:02:14		123.39	123.76	123.26	123.25	123.27	123.32	123.35	123.28	123.33	123.26	123.35	2.2258	0.51	123.76	123.25
03.03.2016 12:02:16		123.39	123.76	123.27	123.25	123.27	123.33	123.34	123.28	123.34	123.28	123.35	2.2256	0.51	123.76	123.25
03.03.2016 12:02:18		123.39	123.77	123.27	123.25	123.27	123.32	123.34	123.28	123.34	123.27	123.35	2.2260	0.52	123.77	123.25
03.03.2016 12:02:20		123.39	123.76	123.27	123.25	123.28	123.32	123.34	123.27	123.34	123.27	123.33	2.2258	0.51	123.76	123.25
03.03.2016 12:02:22		123.39	123.76	123.26	123.24	123.26	123.32	123.35	123.26	123.32	123.26	123.35	2.2258	0.52	123.76	123.24
03.03.2016 12:02:24		123.39	123.76	123.25	123.25	123.26	123.31	123.34	123.27	123.32	123.27	123.34	2.2254	0.51	123.76	123.25
03.03.2016 12:02:26		123.38	123.76	123.26	123.25	123.26	123.32	123.34	123.28	123.32	123.26	123.34	2.2255	0.51	123.76	123.25
03.03.2016 12:02:28		123.38	123.76	123.25	123.25	123.26	123.30	123.33	123.27	123.32	123.26	123.34	2.2253	0.51	123.76	123.25
03.03.2016 12:02:30		123.39	123.75	123.25	123.24	123.26	123.31	123.33	123.27	123.32	123.26	123.33	2.2247	0.51	123.75	123.24
03.03.2016 12:02:32		123.38	123.75	123.25	123.24	123.25	123.31	123.32	123.26	123.33	123.26	123.33	2.2252	0.51	123.75	123.24
03.03.2016 12:02:34		123.37	123.75	123.25	123.23	123.26	123.30	123.32	123.26	123.31	123.26	123.33	2.2248	0.52	123.75	123.23
03.03.2016 12:02:36		123.38	123.75	123.25	123.23	123.25	123.30	123.33	123.27	123.32	123.26	123.33	2.2250	0.52	123.75	123.23
03.03.2016 12:02:38		123.37	123.75	123.25	123.24	123.25	123.31	123.32	123.27	123.32	123.25	123.34	2.2248	0.51	123.75	123.24
03.03.2016 12:02:40		123.38	123.75	123.25	123.24	123.24	123.30	123.32	123.26	123.32	123.25	123.33	2.2247	0.51	123.75	123.24
03.03.2016 12:02:42		123.38	123.75	123.26	123.23	123.26	123.31	123.33	123.26	123.31	123.25	123.33	2.2247	0.52	123.75	123.23
03.03.2016 12:02:44		123.38	123.75	123.25	123.23	123.25	123.31	123.33	123.26	123.31	123.25	123.33	2.2251	0.52	123.75	123.23
03.03.2016 12:02:46		123.38	123.76	123.25	123.24	123.25	123.31	123.33	123.26	123.32	123.25	123.34	2.2253	0.52	123.76	123.24
03.03.2016 12:02:48		123.37	123.76	123.24	123.24	123.26	123.31	123.33	123.26	123.32	123.25	123.34	2.2255	0.52	123.76	123.24
03.03.2016 12:02:50		123.38	123.76	123.25	123.24	123.25	123.31	123.33	123.26	123.32	123.25	123.33	2.2256	0.52	123.76	123.24
03.03.2016 12:02:52		123.38	123.76	123.26	123.24	123.27	123.31	123.33	123.27	123.32	123.25	123.34	2.2256	0.52	123.76	123.24
03.03.2016 12:02:54		123.38	123.76	123.25	123.23	123.26	123.33	123.35	123.26	123.32	123.26	123.34	2.2257	0.53	123.76	123.23
03.03.2016 12:02:56		123.39	123.76	123.26	123.24	123.25	123.31	123.34	123.27	123.32	123.27	123.34	2.2255	0.52	123.76	123.24
03.03.2016 12:02:58		123.38	123.76	123.27	123.25	123.25	123.31	123.33	123.27	123.32	123.26	123.35	2.2257	0.51	123.76	123.25
03.03.2016 12:03:00		123.38	123.76	123.26	123.25	123.27	123.31	123.34	123.28	123.32	123.26	123.33	2.2256	0.51	123.76	123.25
03.03.2016 12:03:02		123.39	123.77	123.26	123.25	123.26	123.32	123.35	123.27	123.32	123.26	123.35	2.2261	0.52	123.77	123.25
03.03.2016 12:03:04		123.38	123.76	123.26	123.25	123.26	123.32	123.34	123.27	123.34	123.26	123.34	2.2259	0.51	123.76	123.25
03.03.2016 12:03:06		123.39	123.77	123.26	123.25	123.27	123.32	123.34	123.27	123.32	123.26	123.35	2.2262	0.52	123.77	123.25
03.03.2016 12:03:08		123.39	123.77	123.27	123.24	123.26	123.31	123.35	123.28	123.33	123.27	123.34	2.2263	0.53	123.77	123.24
03.03.2016 12:03:10		123.38	123.77	123.27	123.26	123.27	123.32	123.33	123.28	123.33	123.25	123.33	2.2264	0.52	123.77	123.25

Performed:  
 03.03.2016 14:20:27

Created:

Reviewed:

Autoclave Sterilization - No. 1234567

# Raw Data Report

## EN285 - Autoclave Validation

XpertLog 3.6.6 - Licensed to: ITL  
 Imported to Autoclave\_ITLDEMO\_on .\LIVES (19.09.2016 14:44:21)

Virtual Channels:  
 minval=min({#R756};{#R1979};{SR756P})  
 maxval=max({#R756};{#R1979};{SR756P})  
 deltaval=max({#R756};{#R1979};{SR756P})-min({#R756};{#R1979};{SR756P})  
 Equip. Info: EN285 Autoclave; Serial Number: ; Location:

a - [03.03.2016 11:53:00]- Start equilibration  
 b - [03.03.2016 11:53:02]- Stop equilibration; Start holding  
 c - [03.03.2016 11:54:00]- 60 seconds  
 1 - [03.03.2016 12:09:16]- Max Difference  
 d - [03.03.2016 12:13:36]- Stop holding

Date & Time	Action	#R756	SR756P	#R1859	#R1944	#R1945	#R1973	#R1974	#R1975	#R1976	#R1977	#R1979	#R756P	deltaval	maxval	minval
03.03.2016 12:03:12		123.39	123.76	123.26	123.25	123.27	123.32	123.33	123.26	123.33	123.26	123.35	2.2255	0.51	123.76	123.25
03.03.2016 12:03:14		123.39	123.77	123.26	123.25	123.26	123.31	123.33	123.29	123.33	123.25	123.35	2.2260	0.52	123.77	123.25
03.03.2016 12:03:16		123.38	123.76	123.26	123.24	123.26	123.33	123.33	123.27	123.33	123.26	123.34	2.2256	0.52	123.76	123.24
03.03.2016 12:03:18		123.39	123.76	123.26	123.24	123.27	123.31	123.34	123.27	123.32	123.27	123.35	2.2256	0.52	123.76	123.24
03.03.2016 12:03:20		123.38	123.76	123.25	123.25	123.27	123.31	123.33	123.27	123.33	123.27	123.34	2.2258	0.51	123.76	123.25
03.03.2016 12:03:22		123.38	123.76	123.25	123.25	123.26	123.31	123.33	123.27	123.31	123.25	123.34	2.2254	0.51	123.76	123.25
03.03.2016 12:03:24		123.39	123.76	123.26	123.25	123.26	123.30	123.33	123.27	123.32	123.26	123.34	2.2258	0.51	123.76	123.25
03.03.2016 12:03:26		123.37	123.76	123.25	123.24	123.26	123.32	123.34	123.27	123.32	123.25	123.33	2.2253	0.52	123.76	123.24
03.03.2016 12:03:28		123.37	123.77	123.27	123.23	123.26	123.30	123.33	123.26	123.32	123.27	123.34	2.2261	0.54	123.77	123.23
03.03.2016 12:03:30		123.38	123.77	123.25	123.23	123.26	123.30	123.33	123.27	123.33	123.26	123.33	2.2260	0.54	123.77	123.23
03.03.2016 12:03:32		123.37	123.77	123.25	123.25	123.26	123.32	123.34	123.28	123.32	123.25	123.34	2.2262	0.52	123.77	123.25
03.03.2016 12:03:34		123.39	123.77	123.26	123.24	123.26	123.32	123.32	123.27	123.33	123.26	123.34	2.2261	0.53	123.77	123.24
03.03.2016 12:03:36		123.39	123.78	123.26	123.25	123.27	123.32	123.34	123.28	123.33	123.27	123.35	2.2267	0.53	123.78	123.25
03.03.2016 12:03:38		123.39	123.78	123.26	123.25	123.27	123.33	123.33	123.27	123.34	123.26	123.35	2.2268	0.53	123.78	123.25
03.03.2016 12:03:40		123.40	123.79	123.27	123.25	123.28	123.32	123.35	123.28	123.34	123.27	123.36	2.2274	0.54	123.79	123.25
03.03.2016 12:03:42		123.39	123.79	123.27	123.26	123.28	123.32	123.35	123.29	123.35	123.27	123.36	2.2274	0.53	123.79	123.26
03.03.2016 12:03:44		123.39	123.79	123.28	123.25	123.28	123.33	123.35	123.28	123.35	123.28	123.36	2.2276	0.54	123.79	123.25
03.03.2016 12:03:46		123.40	123.79	123.28	123.25	123.28	123.33	123.35	123.30	123.35	123.28	123.35	2.2277	0.54	123.79	123.25
03.03.2016 12:03:48		123.40	123.80	123.28	123.27	123.28	123.34	123.36	123.29	123.35	123.29	123.36	2.2281	0.53	123.80	123.27
03.03.2016 12:03:50		123.40	123.80	123.28	123.27	123.29	123.34	123.36	123.30	123.36	123.29	123.36	2.2281	0.53	123.80	123.27
03.03.2016 12:03:52		123.41	123.80	123.30	123.27	123.28	123.34	123.36	123.30	123.36	123.30	123.37	2.2283	0.53	123.80	123.27
03.03.2016 12:03:54		123.42	123.79	123.29	123.27	123.30	123.35	123.36	123.30	123.35	123.29	123.37	2.2275	0.52	123.79	123.27
03.03.2016 12:03:56		123.42	123.80	123.29	123.27	123.29	123.34	123.36	123.30	123.35	123.29	123.37	2.2280	0.53	123.80	123.27
03.03.2016 12:03:58		123.40	123.80	123.28	123.27	123.29	123.34	123.37	123.31	123.36	123.29	123.38	2.2284	0.53	123.80	123.27
03.03.2016 12:04:00		123.40	123.79	123.29	123.27	123.29	123.34	123.37	123.30	123.36	123.28	123.37	2.2277	0.52	123.79	123.27
03.03.2016 12:04:02		123.41	123.79	123.29	123.28	123.29	123.35	123.37	123.31	123.35	123.29	123.38	2.2279	0.51	123.79	123.28
03.03.2016 12:04:04		123.42	123.80	123.29	123.28	123.28	123.34	123.37	123.30	123.36	123.29	123.37	2.2281	0.52	123.80	123.28
03.03.2016 12:04:06		123.42	123.79	123.29	123.26	123.29	123.35	123.38	123.30	123.36	123.29	123.37	2.2278	0.53	123.79	123.26
03.03.2016 12:04:08		123.41	123.80	123.29	123.28	123.29	123.34	123.37	123.31	123.36	123.29	123.37	2.2281	0.52	123.80	123.28
03.03.2016 12:04:10		123.41	123.79	123.29	123.27	123.29	123.34	123.36	123.30	123.36	123.29	123.36	2.2278	0.52	123.79	123.27

Performed:  
 03.03.2016 14:20:27

Created:

Reviewed:

# Raw Data Report

## EN285 - Autoclave Validation

XpertLog 3.6.6 - Licensed to: ITL  
 Imported to Autoclave\_ITLDEMO\_on .\LIVES (19.09.2016 14:44:21)

Virtual Channels:  
 minval=min({#R756};{#R1979};{SR756P})  
 maxval=max({#R756};{#R1979};{SR756P})  
 deltaval=max({#R756};{#R1979};{SR756P})-min({#R756};{#R1979};{SR756P})  
 Equip. Info: EN285 Autoclave; Serial Number: ; Location:

a - [03.03.2016 11:53:00]- Start equilibration  
 b - [03.03.2016 11:53:02]- Stop equilibration; Start holding  
 c - [03.03.2016 11:54:00]- 60 seconds  
 1 - [03.03.2016 12:09:16]- Max Difference  
 d - [03.03.2016 12:13:36]- Stop holding

Date & Time	Action	#R756	SR756P	#R1859	#R1944	#R1945	#R1973	#R1974	#R1975	#R1976	#R1977	#R1979	#R756P	deltaval	maxval	minval
03.03.2016 12:04:12		123.41	123.79	123.29	123.27	123.30	123.34	123.36	123.30	123.34	123.29	123.38	2.2275	0.52	123.79	123.27
03.03.2016 12:04:14		123.42	123.79	123.28	123.27	123.29	123.34	123.36	123.31	123.35	123.29	123.38	2.2277	0.52	123.79	123.27
03.03.2016 12:04:16		123.41	123.79	123.29	123.28	123.29	123.34	123.36	123.31	123.35	123.30	123.37	2.2276	0.51	123.79	123.28
03.03.2016 12:04:18		123.42	123.80	123.29	123.27	123.29	123.35	123.37	123.31	123.35	123.30	123.37	2.2281	0.53	123.80	123.27
03.03.2016 12:04:20		123.41	123.81	123.29	123.28	123.30	123.36	123.36	123.31	123.36	123.28	123.38	2.2287	0.53	123.81	123.28
03.03.2016 12:04:22		123.43	123.81	123.29	123.28	123.29	123.34	123.38	123.31	123.36	123.30	123.38	2.2288	0.53	123.81	123.28
03.03.2016 12:04:24		123.43	123.81	123.29	123.28	123.30	123.36	123.38	123.31	123.37	123.30	123.38	2.2291	0.53	123.81	123.28
03.03.2016 12:04:26		123.43	123.82	123.30	123.29	123.31	123.36	123.38	123.33	123.36	123.30	123.39	2.2294	0.53	123.82	123.29
03.03.2016 12:04:28		123.43	123.82	123.30	123.28	123.30	123.37	123.39	123.31	123.37	123.31	123.39	2.2299	0.54	123.82	123.28
03.03.2016 12:04:30		123.43	123.82	123.31	123.29	123.31	123.36	123.38	123.32	123.38	123.32	123.40	2.2296	0.53	123.82	123.29
03.03.2016 12:04:32		123.44	123.82	123.31	123.30	123.32	123.37	123.40	123.33	123.39	123.31	123.40	2.2299	0.52	123.82	123.30
03.03.2016 12:04:34		123.45	123.83	123.31	123.30	123.33	123.37	123.39	123.33	123.37	123.31	123.40	2.2303	0.53	123.83	123.30
03.03.2016 12:04:36		123.45	123.83	123.31	123.29	123.32	123.38	123.40	123.33	123.38	123.32	123.40	2.2301	0.54	123.83	123.29
03.03.2016 12:04:38		123.44	123.82	123.31	123.30	123.33	123.38	123.39	123.34	123.39	123.31	123.40	2.2300	0.52	123.82	123.30
03.03.2016 12:04:40		123.45	123.83	123.32	123.31	123.32	123.38	123.40	123.34	123.39	123.32	123.40	2.2301	0.52	123.83	123.31
03.03.2016 12:04:42		123.45	123.82	123.31	123.30	123.33	123.37	123.40	123.34	123.39	123.33	123.40	2.2300	0.52	123.82	123.30
03.03.2016 12:04:44		123.46	123.83	123.33	123.31	123.34	123.38	123.40	123.33	123.39	123.33	123.41	2.2305	0.52	123.83	123.31
03.03.2016 12:04:46		123.45	123.83	123.32	123.30	123.32	123.37	123.40	123.34	123.39	123.33	123.40	2.2302	0.53	123.83	123.30
03.03.2016 12:04:48		123.45	123.83	123.32	123.31	123.33	123.38	123.40	123.34	123.39	123.33	123.39	2.2302	0.52	123.83	123.31
03.03.2016 12:04:50		123.45	123.83	123.32	123.31	123.31	123.38	123.40	123.33	123.39	123.32	123.40	2.2302	0.52	123.83	123.31
03.03.2016 12:04:52		123.45	123.83	123.32	123.31	123.32	123.38	123.39	123.34	123.39	123.33	123.40	2.2304	0.52	123.83	123.31
03.03.2016 12:04:54		123.44	123.82	123.32	123.29	123.32	123.38	123.40	123.33	123.39	123.32	123.40	2.2298	0.53	123.82	123.29
03.03.2016 12:04:56		123.44	123.82	123.32	123.31	123.33	123.37	123.39	123.34	123.39	123.32	123.41	2.2300	0.51	123.82	123.31
03.03.2016 12:04:58		123.44	123.82	123.32	123.30	123.34	123.39	123.40	123.33	123.39	123.33	123.41	2.2300	0.52	123.82	123.30
03.03.2016 12:05:00		123.44	123.83	123.31	123.30	123.33	123.37	123.40	123.34	123.38	123.31	123.40	2.2302	0.53	123.83	123.30
03.03.2016 12:05:02		123.45	123.82	123.32	123.30	123.32	123.38	123.40	123.33	123.39	123.32	123.40	2.2300	0.52	123.82	123.30
03.03.2016 12:05:04		123.45	123.82	123.31	123.30	123.32	123.37	123.40	123.32	123.39	123.32	123.40	2.2298	0.52	123.82	123.30
03.03.2016 12:05:06		123.44	123.82	123.32	123.30	123.32	123.38	123.39	123.33	123.38	123.31	123.41	2.2300	0.52	123.82	123.30
03.03.2016 12:05:08		123.44	123.82	123.31	123.30	123.32	123.38	123.40	123.33	123.39	123.32	123.41	2.2295	0.52	123.82	123.30
03.03.2016 12:05:10		123.44	123.82	123.32	123.29	123.31	123.36	123.39	123.33	123.38	123.31	123.39	2.2295	0.53	123.82	123.29

Performed:  
 03.03.2016 14:20:27

Created:

Reviewed:

Autoclave Sterilization - No. 1234567

# Raw Data Report

## EN285 - Autoclave Validation

XpertLog 3.6.6 - Licensed to: ITL  
 Imported to Autoclave\_ITLDEMO\_on .\LIVES (19.09.2016 14:44:21)

### Virtual Channels:

minval=min({#R756};{#R1979};{SR756P})  
 maxval=max({#R756};{#R1979};{SR756P})  
 deltaval=max({#R756};{#R1979};{SR756P})-min({#R756};{#R1979};{SR756P})  
 Equip. Info: EN285 Autoclave; Serial Number: ; Location:

a - [03.03.2016 11:53:00]- Start equilibration  
 b - [03.03.2016 11:53:02]- Stop equilibration; Start holding  
 c - [03.03.2016 11:54:00]- 60 seconds  
 1 - [03.03.2016 12:09:16]- Max Difference  
 d - [03.03.2016 12:13:36]- Stop holding

Date & Time	Action	#R756	SR756P	#R1859	#R1944	#R1945	#R1973	#R1974	#R1975	#R1976	#R1977	#R1979	#R756P	deltaval	maxval	minval
03.03.2016 12:05:12		123.43	123.82	123.31	123.30	123.32	123.36	123.40	123.32	123.39	123.31	123.39	2.2297	0.52	123.82	123.30
03.03.2016 12:05:14		123.45	123.81	123.32	123.30	123.31	123.36	123.39	123.33	123.38	123.31	123.40	2.2292	0.51	123.81	123.30
03.03.2016 12:05:16		123.43	123.82	123.31	123.30	123.31	123.37	123.40	123.32	123.38	123.30	123.39	2.2294	0.52	123.82	123.30
03.03.2016 12:05:18		123.43	123.83	123.30	123.29	123.31	123.36	123.38	123.33	123.38	123.31	123.40	2.2301	0.54	123.83	123.29
03.03.2016 12:05:20		123.44	123.82	123.31	123.30	123.32	123.37	123.39	123.33	123.37	123.31	123.39	2.2298	0.52	123.82	123.30
03.03.2016 12:05:22		123.45	123.83	123.31	123.29	123.31	123.36	123.38	123.32	123.37	123.32	123.40	2.2304	0.54	123.83	123.29
03.03.2016 12:05:24		123.44	123.83	123.33	123.30	123.32	123.38	123.38	123.33	123.38	123.31	123.40	2.2305	0.53	123.83	123.30
03.03.2016 12:05:26		123.44	123.83	123.31	123.29	123.32	123.37	123.39	123.33	123.38	123.31	123.40	2.2302	0.54	123.83	123.29
03.03.2016 12:05:28		123.44	123.83	123.31	123.31	123.32	123.37	123.39	123.33	123.39	123.32	123.40	2.2306	0.52	123.83	123.31
03.03.2016 12:05:30		123.45	123.83	123.31	123.30	123.33	123.38	123.39	123.34	123.38	123.32	123.40	2.2305	0.53	123.83	123.30
03.03.2016 12:05:32		123.45	123.83	123.31	123.30	123.32	123.37	123.40	123.33	123.39	123.31	123.41	2.2304	0.53	123.83	123.30
03.03.2016 12:05:34		123.45	123.84	123.32	123.31	123.32	123.37	123.40	123.33	123.39	123.33	123.40	2.2309	0.53	123.84	123.31
03.03.2016 12:05:36		123.45	123.83	123.32	123.30	123.34	123.38	123.39	123.35	123.38	123.32	123.41	2.2306	0.53	123.83	123.30
03.03.2016 12:05:38		123.45	123.84	123.33	123.30	123.32	123.37	123.39	123.34	123.39	123.32	123.41	2.2311	0.54	123.84	123.30
03.03.2016 12:05:40		123.46	123.83	123.32	123.32	123.33	123.37	123.41	123.33	123.39	123.32	123.40	2.2304	0.51	123.83	123.32
03.03.2016 12:05:42		123.46	123.83	123.32	123.31	123.32	123.38	123.41	123.34	123.39	123.33	123.41	2.2302	0.52	123.83	123.31
03.03.2016 12:05:44		123.45	123.84	123.33	123.30	123.32	123.38	123.40	123.35	123.39	123.32	123.41	2.2309	0.54	123.84	123.30
03.03.2016 12:05:46		123.45	123.83	123.33	123.31	123.33	123.38	123.40	123.35	123.40	123.32	123.40	2.2304	0.52	123.83	123.31
03.03.2016 12:05:48		123.45	123.83	123.31	123.31	123.33	123.38	123.40	123.34	123.40	123.32	123.41	2.2306	0.52	123.83	123.31
03.03.2016 12:05:50		123.46	123.83	123.33	123.31	123.32	123.37	123.40	123.33	123.40	123.33	123.41	2.2301	0.52	123.83	123.31
03.03.2016 12:05:52		123.44	123.83	123.33	123.29	123.32	123.38	123.41	123.33	123.39	123.32	123.41	2.2305	0.54	123.83	123.29
03.03.2016 12:05:54		123.44	123.83	123.32	123.31	123.33	123.38	123.40	123.32	123.39	123.32	123.40	2.2307	0.52	123.83	123.31
03.03.2016 12:05:56		123.45	123.82	123.32	123.30	123.32	123.38	123.39	123.33	123.39	123.33	123.41	2.2299	0.52	123.82	123.30
03.03.2016 12:05:58		123.45	123.82	123.31	123.31	123.32	123.37	123.40	123.34	123.38	123.31	123.39	2.2297	0.51	123.82	123.31
03.03.2016 12:06:00		123.44	123.83	123.31	123.30	123.31	123.37	123.40	123.33	123.38	123.31	123.40	2.2303	0.53	123.83	123.30
03.03.2016 12:06:02		123.44	123.82	123.31	123.30	123.31	123.37	123.39	123.33	123.38	123.31	123.39	2.2297	0.52	123.82	123.30
03.03.2016 12:06:04		123.43	123.81	123.31	123.29	123.31	123.36	123.39	123.32	123.37	123.31	123.38	2.2292	0.52	123.81	123.29
03.03.2016 12:06:06		123.43	123.82	123.31	123.30	123.31	123.36	123.38	123.32	123.38	123.30	123.38	2.2296	0.52	123.82	123.30
03.03.2016 12:06:08		123.43	123.81	123.30	123.28	123.31	123.36	123.38	123.31	123.37	123.30	123.39	2.2292	0.53	123.81	123.28
03.03.2016 12:06:10		123.43	123.82	123.30	123.29	123.31	123.35	123.38	123.32	123.36	123.30	123.38	2.2297	0.53	123.82	123.29

Performed:  
 03.03.2016 14:20:27

Created:

Reviewed:

# Raw Data Report

## EN285 - Autoclave Validation

XpertLog 3.6.6 - Licensed to: ITL  
 Imported to Autoclave\_ITLDEMO\_on .\LIVES (19.09.2016 14:44:21)

### Virtual Channels:

minval=min({#R756};{#R1979};{SR756P})  
 maxval=max({#R756};{#R1979};{SR756P})  
 deltaval=max({#R756};{#R1979};{SR756P})-min({#R756};{#R1979};{SR756P})  
 Equip. Info: EN285 Autoclave; Serial Number: ; Location:

a - [03.03.2016 11:53:00]- Start equilibration  
 b - [03.03.2016 11:53:02]- Stop equilibration; Start holding  
 c - [03.03.2016 11:54:00]- 60 seconds  
 1 - [03.03.2016 12:09:16]- Max Difference  
 d - [03.03.2016 12:13:36]- Stop holding

Date & Time	Action	#R756	SR756P	#R1859	#R1944	#R1945	#R1973	#R1974	#R1975	#R1976	#R1977	#R1979	#R756P	deltaval	maxval	minval
03.03.2016 12:06:12		123.43	123.82	123.30	123.28	123.30	123.35	123.38	123.31	123.37	123.30	123.39	2.2295	0.54	123.82	123.28
03.03.2016 12:06:14		123.44	123.81	123.30	123.29	123.31	123.36	123.39	123.33	123.36	123.31	123.38	2.2288	0.52	123.81	123.29
03.03.2016 12:06:16		123.43	123.82	123.29	123.29	123.31	123.36	123.38	123.31	123.37	123.30	123.39	2.2297	0.53	123.82	123.29
03.03.2016 12:06:18		123.43	123.82	123.30	123.30	123.30	123.36	123.38	123.32	123.36	123.30	123.39	2.2300	0.52	123.82	123.30
03.03.2016 12:06:20		123.42	123.82	123.32	123.29	123.31	123.37	123.39	123.32	123.37	123.30	123.39	2.2300	0.53	123.82	123.29
03.03.2016 12:06:22		123.45	123.82	123.31	123.30	123.31	123.36	123.39	123.32	123.38	123.31	123.39	2.2295	0.52	123.82	123.30
03.03.2016 12:06:24		123.44	123.81	123.31	123.29	123.32	123.37	123.38	123.33	123.39	123.32	123.39	2.2293	0.52	123.81	123.29
03.03.2016 12:06:26		123.44	123.82	123.31	123.30	123.31	123.37	123.40	123.32	123.37	123.30	123.39	2.2297	0.52	123.82	123.30
03.03.2016 12:06:28		123.44	123.82	123.31	123.29	123.32	123.37	123.39	123.33	123.38	123.31	123.39	2.2300	0.53	123.82	123.29
03.03.2016 12:06:30		123.44	123.83	123.32	123.30	123.32	123.36	123.38	123.32	123.38	123.32	123.40	2.2302	0.53	123.83	123.30
03.03.2016 12:06:32		123.43	123.82	123.31	123.28	123.31	123.37	123.39	123.32	123.39	123.31	123.39	2.2299	0.54	123.82	123.28
03.03.2016 12:06:34		123.45	123.82	123.31	123.29	123.32	123.37	123.39	123.33	123.38	123.31	123.39	2.2298	0.53	123.82	123.29
03.03.2016 12:06:36		123.43	123.83	123.32	123.30	123.32	123.37	123.38	123.32	123.38	123.31	123.39	2.2303	0.53	123.83	123.30
03.03.2016 12:06:38		123.44	123.83	123.31	123.29	123.33	123.37	123.39	123.31	123.38	123.31	123.39	2.2301	0.54	123.83	123.29
03.03.2016 12:06:40		123.44	123.83	123.31	123.30	123.31	123.37	123.39	123.34	123.38	123.31	123.40	2.2301	0.53	123.83	123.30
03.03.2016 12:06:42		123.44	123.82	123.31	123.30	123.32	123.37	123.39	123.32	123.38	123.31	123.39	2.2297	0.52	123.82	123.30
03.03.2016 12:06:44		123.44	123.81	123.30	123.29	123.31	123.37	123.40	123.32	123.38	123.31	123.39	2.2292	0.52	123.81	123.29
03.03.2016 12:06:46		123.43	123.82	123.31	123.30	123.31	123.36	123.39	123.32	123.38	123.31	123.38	2.2296	0.52	123.82	123.30
03.03.2016 12:06:48		123.44	123.81	123.30	123.29	123.31	123.37	123.39	123.31	123.36	123.30	123.40	2.2291	0.52	123.81	123.29
03.03.2016 12:06:50		123.43	123.81	123.31	123.30	123.31	123.36	123.39	123.32	123.38	123.30	123.40	2.2291	0.51	123.81	123.30
03.03.2016 12:06:52		123.43	123.82	123.32	123.28	123.30	123.36	123.38	123.32	123.38	123.31	123.39	2.2294	0.54	123.82	123.28
03.03.2016 12:06:54		123.43	123.81	123.30	123.28	123.31	123.36	123.39	123.32	123.37	123.30	123.39	2.2291	0.53	123.81	123.28
03.03.2016 12:06:56		123.43	123.81	123.31	123.28	123.30	123.35	123.38	123.31	123.37	123.30	123.38	2.2287	0.53	123.81	123.28
03.03.2016 12:06:58		123.43	123.81	123.30	123.29	123.30	123.36	123.38	123.30	123.37	123.30	123.38	2.2291	0.52	123.81	123.29
03.03.2016 12:07:00		123.42	123.81	123.29	123.28	123.30	123.36	123.38	123.31	123.36	123.30	123.38	2.2288	0.53	123.81	123.28
03.03.2016 12:07:02		123.42	123.81	123.29	123.28	123.31	123.36	123.38	123.31	123.36	123.30	123.37	2.2287	0.53	123.81	123.28
03.03.2016 12:07:04		123.41	123.80	123.29	123.27	123.29	123.34	123.37	123.30	123.36	123.29	123.38	2.2285	0.53	123.80	123.27
03.03.2016 12:07:06		123.41	123.79	123.28	123.28	123.29	123.35	123.37	123.30	123.36	123.29	123.37	2.2279	0.51	123.79	123.28
03.03.2016 12:07:08		123.41	123.79	123.29	123.27	123.29	123.33	123.36	123.31	123.35	123.27	123.38	2.2275	0.52	123.79	123.27
03.03.2016 12:07:10		123.41	123.80	123.28	123.26	123.28	123.34	123.36	123.30	123.35	123.27	123.37	2.2280	0.54	123.80	123.26

Performed:  
 03.03.2016 14:20:27

Created:

Reviewed:

Autoclave Sterilization - No. 1234567



# Raw Data Report

## EN285 - Autoclave Validation

XpertLog 3.6.6 - Licensed to: ITL  
 Imported to Autoclave\_ITLDEMO\_on .\LIVES (19.09.2016 14:44:21)

### Virtual Channels:

minval=min({#R756};{#R1979};{SR756P})  
 maxval=max({#R756};{#R1979};{SR756P})  
 deltaval=max({#R756};{#R1979};{SR756P})-min({#R756};{#R1979};{SR756P})  
 Equip. Info: EN285 Autoclave; Serial Number: ; Location:

a - [03.03.2016 11:53:00]- Start equilibration  
 b - [03.03.2016 11:53:02]- Stop equilibration; Start holding  
 c - [03.03.2016 11:54:00]- 60 seconds  
 1 - [03.03.2016 12:09:16]- Max Difference  
 d - [03.03.2016 12:13:36]- Stop holding

Date & Time	Action	#R756	SR756P	#R1859	#R1944	#R1945	#R1973	#R1974	#R1975	#R1976	#R1977	#R1979	#R756P	deltaval	maxval	minval
03.03.2016 12:07:12		123.41	123.79	123.28	123.26	123.27	123.33	123.35	123.29	123.35	123.27	123.36	2.2275	0.53	123.79	123.26
03.03.2016 12:07:14		123.40	123.78	123.28	123.26	123.28	123.34	123.35	123.29	123.35	123.28	123.36	2.2269	0.52	123.78	123.26
03.03.2016 12:07:16		123.39	123.78	123.28	123.26	123.28	123.33	123.35	123.29	123.35	123.27	123.36	2.2271	0.52	123.78	123.26
03.03.2016 12:07:18		123.40	123.78	123.27	123.25	123.28	123.33	123.35	123.28	123.34	123.27	123.36	2.2270	0.53	123.78	123.25
03.03.2016 12:07:20		123.40	123.79	123.28	123.26	123.27	123.33	123.36	123.29	123.34	123.28	123.35	2.2273	0.53	123.79	123.26
03.03.2016 12:07:22		123.40	123.78	123.26	123.25	123.29	123.33	123.35	123.30	123.34	123.27	123.36	2.2271	0.53	123.78	123.25
03.03.2016 12:07:24		123.40	123.80	123.28	123.26	123.27	123.33	123.36	123.29	123.36	123.28	123.36	2.2281	0.54	123.80	123.26
03.03.2016 12:07:26		123.42	123.80	123.28	123.27	123.28	123.33	123.36	123.30	123.35	123.29	123.36	2.2281	0.53	123.80	123.27
03.03.2016 12:07:28		123.40	123.80	123.28	123.27	123.28	123.34	123.36	123.29	123.35	123.29	123.36	2.2282	0.53	123.80	123.27
03.03.2016 12:07:30		123.41	123.80	123.28	123.27	123.29	123.33	123.36	123.30	123.35	123.28	123.36	2.2284	0.53	123.80	123.27
03.03.2016 12:07:32		123.42	123.80	123.28	123.27	123.28	123.35	123.37	123.30	123.35	123.28	123.37	2.2283	0.53	123.80	123.27
03.03.2016 12:07:34		123.41	123.81	123.28	123.26	123.29	123.34	123.36	123.29	123.35	123.29	123.36	2.2288	0.55	123.81	123.26
03.03.2016 12:07:36		123.42	123.80	123.28	123.26	123.29	123.34	123.36	123.29	123.35	123.29	123.36	2.2284	0.54	123.80	123.26
03.03.2016 12:07:38		123.41	123.80	123.28	123.27	123.30	123.34	123.35	123.29	123.36	123.29	123.36	2.2283	0.53	123.80	123.27
03.03.2016 12:07:40		123.42	123.80	123.29	123.27	123.29	123.33	123.36	123.30	123.35	123.27	123.37	2.2284	0.53	123.80	123.27
03.03.2016 12:07:42		123.42	123.80	123.28	123.26	123.29	123.34	123.37	123.30	123.35	123.28	123.37	2.2284	0.54	123.80	123.26
03.03.2016 12:07:44		123.42	123.80	123.28	123.27	123.29	123.34	123.36	123.30	123.34	123.29	123.36	2.2282	0.53	123.80	123.27
03.03.2016 12:07:46		123.41	123.80	123.29	123.27	123.28	123.34	123.37	123.29	123.35	123.29	123.37	2.2281	0.53	123.80	123.27
03.03.2016 12:07:48		123.41	123.80	123.27	123.27	123.29	123.34	123.37	123.29	123.35	123.28	123.36	2.2282	0.53	123.80	123.27
03.03.2016 12:07:50		123.42	123.79	123.28	123.27	123.29	123.34	123.36	123.30	123.36	123.29	123.36	2.2279	0.52	123.79	123.27
03.03.2016 12:07:52		123.41	123.80	123.28	123.27	123.28	123.34	123.36	123.30	123.35	123.28	123.36	2.2281	0.53	123.80	123.27
03.03.2016 12:07:54		123.40	123.79	123.29	123.26	123.28	123.34	123.35	123.29	123.35	123.27	123.36	2.2278	0.53	123.79	123.26
03.03.2016 12:07:56		123.40	123.79	123.28	123.26	123.28	123.33	123.36	123.28	123.34	123.27	123.35	2.2277	0.53	123.79	123.26
03.03.2016 12:07:58		123.40	123.79	123.27	123.26	123.28	123.33	123.36	123.28	123.34	123.27	123.36	2.2276	0.53	123.79	123.26
03.03.2016 12:08:00		123.41	123.79	123.27	123.26	123.28	123.34	123.35	123.29	123.34	123.27	123.35	2.2277	0.53	123.79	123.26
03.03.2016 12:08:02		123.40	123.79	123.27	123.25	123.28	123.33	123.34	123.28	123.34	123.27	123.35	2.2274	0.54	123.79	123.25
03.03.2016 12:08:04		123.39	123.78	123.28	123.24	123.28	123.33	123.34	123.28	123.33	123.26	123.34	2.2272	0.54	123.78	123.24
03.03.2016 12:08:06		123.39	123.77	123.26	123.25	123.27	123.32	123.35	123.28	123.33	123.27	123.35	2.2264	0.52	123.77	123.25
03.03.2016 12:08:08		123.39	123.77	123.27	123.25	123.27	123.32	123.34	123.27	123.33	123.27	123.35	2.2261	0.52	123.77	123.25
03.03.2016 12:08:10		123.40	123.77	123.26	123.25	123.26	123.32	123.33	123.27	123.33	123.27	123.35	2.2264	0.52	123.77	123.25

Performed:  
 03.03.2016 14:20:27

Created:

Reviewed:

# Raw Data Report

## EN285 - Autoclave Validation

XpertLog 3.6.6 - Licensed to: ITL  
 Imported to Autoclave\_ITLDEMO\_on .\LIVES (19.09.2016 14:44:21)

### Virtual Channels:

minval=min({#R756};{#R1979};{SR756P})  
 maxval=max({#R756};{#R1979};{SR756P})  
 deltaval=max({#R756};{#R1979};{SR756P})-min({#R756};{#R1979};{SR756P})  
 Equip. Info: EN285 Autoclave; Serial Number: ; Location:

a - [03.03.2016 11:53:00]- Start equilibration  
 b - [03.03.2016 11:53:02]- Stop equilibration; Start holding  
 c - [03.03.2016 11:54:00]- 60 seconds  
 1 - [03.03.2016 12:09:16]- Max Difference  
 d - [03.03.2016 12:13:36]- Stop holding

Date & Time	Action	#R756	SR756P	#R1859	#R1944	#R1945	#R1973	#R1974	#R1975	#R1976	#R1977	#R1979	#R756P	deltaval	maxval	minval
03.03.2016 12:08:12		123.39	123.77	123.26	123.25	123.26	123.32	123.33	123.27	123.32	123.25	123.35	2.2262	0.52	123.77	123.25
03.03.2016 12:08:14		123.39	123.77	123.26	123.25	123.26	123.31	123.33	123.27	123.32	123.25	123.34	2.2260	0.52	123.77	123.25
03.03.2016 12:08:16		123.38	123.77	123.26	123.24	123.25	123.31	123.33	123.27	123.32	123.25	123.34	2.2263	0.53	123.77	123.24
03.03.2016 12:08:18		123.38	123.77	123.24	123.24	123.26	123.31	123.33	123.26	123.32	123.24	123.33	2.2262	0.53	123.77	123.24
03.03.2016 12:08:20		123.38	123.77	123.25	123.24	123.26	123.31	123.33	123.26	123.32	123.25	123.33	2.2264	0.53	123.77	123.24
03.03.2016 12:08:22		123.37	123.77	123.26	123.24	123.26	123.30	123.34	123.26	123.32	123.25	123.34	2.2264	0.53	123.77	123.24
03.03.2016 12:08:24		123.38	123.77	123.26	123.24	123.26	123.31	123.34	123.27	123.31	123.24	123.34	2.2263	0.53	123.77	123.24
03.03.2016 12:08:26		123.38	123.77	123.25	123.24	123.26	123.31	123.34	123.26	123.31	123.25	123.33	2.2262	0.53	123.77	123.24
03.03.2016 12:08:28		123.38	123.78	123.26	123.24	123.26	123.31	123.33	123.26	123.33	123.25	123.34	2.2271	0.54	123.78	123.24
03.03.2016 12:08:30		123.39	123.78	123.26	123.25	123.26	123.32	123.34	123.28	123.32	123.25	123.34	2.2271	0.53	123.78	123.25
03.03.2016 12:08:32		123.39	123.79	123.26	123.25	123.28	123.33	123.34	123.27	123.34	123.26	123.34	2.2274	0.54	123.79	123.25
03.03.2016 12:08:34		123.39	123.78	123.27	123.24	123.28	123.32	123.35	123.27	123.34	123.25	123.34	2.2272	0.54	123.78	123.24
03.03.2016 12:08:36		123.40	123.79	123.27	123.25	123.28	123.32	123.35	123.28	123.33	123.26	123.36	2.2274	0.54	123.79	123.25
03.03.2016 12:08:38		123.40	123.79	123.28	123.25	123.27	123.33	123.35	123.27	123.34	123.27	123.36	2.2279	0.54	123.79	123.25
03.03.2016 12:08:40		123.39	123.79	123.26	123.27	123.29	123.32	123.36	123.29	123.34	123.27	123.36	2.2274	0.53	123.79	123.26
03.03.2016 12:08:42		123.40	123.79	123.28	123.26	123.27	123.33	123.35	123.28	123.35	123.26	123.35	2.2275	0.53	123.79	123.26
03.03.2016 12:08:44		123.40	123.79	123.28	123.25	123.28	123.34	123.34	123.28	123.34	123.28	123.36	2.2278	0.54	123.79	123.25
03.03.2016 12:08:46		123.41	123.79	123.28	123.26	123.29	123.34	123.35	123.28	123.35	123.27	123.36	2.2277	0.53	123.79	123.26
03.03.2016 12:08:48		123.40	123.79	123.28	123.25	123.28	123.33	123.36	123.29	123.35	123.27	123.36	2.2275	0.54	123.79	123.25
03.03.2016 12:08:50		123.40	123.79	123.27	123.25	123.27	123.33	123.35	123.28	123.36	123.28	123.35	2.2275	0.54	123.79	123.25
03.03.2016 12:08:52		123.39	123.79	123.27	123.26	123.28	123.33	123.35	123.29	123.34	123.27	123.36	2.2276	0.53	123.79	123.26
03.03.2016 12:08:54		123.39	123.79	123.28	123.26	123.28	123.34	123.35	123.29	123.35	123.26	123.36	2.2278	0.53	123.79	123.26
03.03.2016 12:08:56		123.39	123.79	123.28	123.27	123.28	123.33	123.35	123.28	123.34	123.27	123.35	2.2277	0.52	123.79	123.27
03.03.2016 12:08:58		123.40	123.79	123.27	123.26	123.28	123.32	123.35	123.28	123.34	123.27	123.36	2.2274	0.53	123.79	123.26
03.03.2016 12:09:00		123.40	123.79	123.28	123.26	123.27	123.33	123.34	123.28	123.34	123.27	123.35	2.2274	0.53	123.79	123.26
03.03.2016 12:09:02		123.40	123.78	123.27	123.26	123.27	123.32	123.35	123.28	123.35	123.25	123.35	2.2272	0.53	123.78	123.25
03.03.2016 12:09:04		123.40	123.78	123.27	123.25	123.27	123.31	123.34	123.27	123.34	123.26	123.35	2.2268	0.53	123.78	123.25
03.03.2016 12:09:06		123.39	123.78	123.26	123.24	123.27	123.32	123.34	123.27	123.34	123.26	123.34	2.2269	0.54	123.78	123.24
03.03.2016 12:09:08		123.39	123.77	123.26	123.24	123.26	123.32	123.34	123.28	123.32	123.26	123.34	2.2261	0.53	123.77	123.24
03.03.2016 12:09:10		123.39	123.77	123.26	123.24	123.26	123.32	123.33	123.27	123.34	123.26	123.34	2.2265	0.53	123.77	123.24

Performed:  
 03.03.2016 14:20:27

Created:

Reviewed:

# Raw Data Report

## EN285 - Autoclave Validation

XpertLog 3.6.6 - Licensed to: ITL  
 Imported to Autoclave\_ITLDEMO\_on .\LIVES (19.09.2016 14:44:21)

Virtual Channels:  
 minval=min({#R756};{#R1979};{SR756P})  
 maxval=max({#R756};{#R1979};{SR756P})  
 deltaval=max({#R756};{#R1979};{SR756P})-min({#R756};{#R1979};{SR756P})  
 Equip. Info: EN285 Autoclave; Serial Number: ; Location:

a - [03.03.2016 11:53:00]- Start equilibration  
 b - [03.03.2016 11:53:02]- Stop equilibration; Start holding  
 c - [03.03.2016 11:54:00]- 60 seconds  
 1 - [03.03.2016 12:09:16]- Max Difference  
 d - [03.03.2016 12:13:36]- Stop holding

Date & Time	Action	#R756	SR756P	#R1859	#R1944	#R1945	#R1973	#R1974	#R1975	#R1976	#R1977	#R1979	#R756P	deltaval	maxval	minval
03.03.2016 12:09:12		123.38	123.78	123.25	123.24	123.25	123.32	123.34	123.26	123.33	123.26	123.35	2.2267	0.54	123.78	123.24
03.03.2016 12:09:14		123.39	123.78	123.26	123.25	123.27	123.31	123.34	123.26	123.33	123.26	123.34	2.2269	0.53	123.78	123.25
03.03.2016 12:09:16	1	123.39	123.78	123.26	123.23	123.25	123.32	123.34	123.27	123.33	123.25	123.35	2.2268	0.55	123.78	123.23
03.03.2016 12:09:18		123.38	123.78	123.27	123.24	123.27	123.31	123.35	123.27	123.33	123.26	123.33	2.2267	0.54	123.78	123.24
03.03.2016 12:09:20		123.39	123.78	123.27	123.25	123.26	123.31	123.34	123.27	123.32	123.25	123.35	2.2268	0.53	123.78	123.25
03.03.2016 12:09:22		123.39	123.79	123.27	123.25	123.27	123.32	123.33	123.27	123.34	123.26	123.36	2.2276	0.54	123.79	123.25
03.03.2016 12:09:24		123.40	123.79	123.26	123.25	123.27	123.32	123.34	123.28	123.32	123.27	123.34	2.2274	0.54	123.79	123.25
03.03.2016 12:09:26		123.40	123.79	123.27	123.25	123.27	123.32	123.34	123.26	123.34	123.26	123.35	2.2275	0.54	123.79	123.25
03.03.2016 12:09:28		123.40	123.79	123.27	123.27	123.28	123.33	123.36	123.28	123.35	123.28	123.35	2.2278	0.52	123.79	123.27
03.03.2016 12:09:30		123.40	123.79	123.27	123.26	123.27	123.32	123.35	123.28	123.34	123.27	123.36	2.2277	0.53	123.79	123.26
03.03.2016 12:09:32		123.41	123.79	123.29	123.26	123.27	123.34	123.35	123.28	123.35	123.27	123.35	2.2276	0.53	123.79	123.26
03.03.2016 12:09:34		123.40	123.79	123.28	123.25	123.28	123.34	123.35	123.28	123.35	123.27	123.35	2.2277	0.54	123.79	123.25
03.03.2016 12:09:36		123.41	123.79	123.28	123.26	123.28	123.33	123.36	123.28	123.34	123.26	123.36	2.2276	0.53	123.79	123.26
03.03.2016 12:09:38		123.40	123.78	123.28	123.26	123.27	123.34	123.36	123.28	123.35	123.29	123.36	2.2269	0.52	123.78	123.26
03.03.2016 12:09:40		123.40	123.80	123.28	123.26	123.28	123.33	123.35	123.30	123.34	123.27	123.37	2.2280	0.54	123.80	123.26
03.03.2016 12:09:42		123.40	123.79	123.29	123.26	123.29	123.33	123.36	123.29	123.35	123.27	123.35	2.2277	0.53	123.79	123.26
03.03.2016 12:09:44		123.41	123.79	123.29	123.27	123.28	123.34	123.35	123.30	123.35	123.28	123.36	2.2279	0.52	123.79	123.27
03.03.2016 12:09:46		123.41	123.80	123.28	123.26	123.29	123.34	123.36	123.30	123.35	123.28	123.36	2.2280	0.54	123.80	123.26
03.03.2016 12:09:48		123.41	123.79	123.27	123.27	123.28	123.33	123.36	123.28	123.35	123.26	123.37	2.2279	0.53	123.79	123.26
03.03.2016 12:09:50		123.40	123.79	123.28	123.26	123.28	123.34	123.35	123.28	123.35	123.27	123.37	2.2274	0.53	123.79	123.26
03.03.2016 12:09:52		123.41	123.79	123.28	123.26	123.28	123.33	123.36	123.28	123.34	123.27	123.36	2.2277	0.53	123.79	123.26
03.03.2016 12:09:54		123.41	123.79	123.28	123.25	123.28	123.33	123.34	123.28	123.35	123.29	123.35	2.2277	0.54	123.79	123.25
03.03.2016 12:09:56		123.40	123.79	123.27	123.26	123.28	123.32	123.36	123.28	123.34	123.27	123.36	2.2273	0.53	123.79	123.26
03.03.2016 12:09:58		123.39	123.78	123.27	123.25	123.28	123.33	123.35	123.28	123.34	123.27	123.34	2.2272	0.53	123.78	123.25
03.03.2016 12:10:00		123.39	123.77	123.27	123.25	123.26	123.32	123.35	123.27	123.33	123.27	123.34	2.2266	0.52	123.77	123.25
03.03.2016 12:10:02		123.39	123.78	123.27	123.26	123.27	123.33	123.34	123.28	123.34	123.26	123.35	2.2270	0.52	123.78	123.26
03.03.2016 12:10:04		123.39	123.78	123.27	123.26	123.28	123.33	123.35	123.28	123.34	123.26	123.36	2.2268	0.52	123.78	123.26
03.03.2016 12:10:06		123.39	123.78	123.27	123.26	123.26	123.32	123.35	123.28	123.34	123.25	123.35	2.2269	0.53	123.78	123.25
03.03.2016 12:10:08		123.40	123.78	123.28	123.25	123.28	123.32	123.34	123.27	123.33	123.26	123.36	2.2269	0.53	123.78	123.25
03.03.2016 12:10:10		123.39	123.79	123.26	123.26	123.27	123.32	123.35	123.28	123.34	123.25	123.35	2.2273	0.54	123.79	123.25

Performed:  
 03.03.2016 14:20:27

Created:

Reviewed:

# Raw Data Report

## EN285 - Autoclave Validation

XpertLog 3.6.6 - Licensed to: ITL  
 Imported to Autoclave\_ITLDEMO\_on .\LIVES (19.09.2016 14:44:21)

Virtual Channels:  
 minval=min({#R756};{#R1979};{SR756P})  
 maxval=max({#R756};{#R1979};{SR756P})  
 deltaval=max({#R756};{#R1979};{SR756P})-min({#R756};{#R1979};{SR756P})  
 Equip. Info: EN285 Autoclave; Serial Number: ; Location:

a - [03.03.2016 11:53:00]- Start equilibration  
 b - [03.03.2016 11:53:02]- Stop equilibration; Start holding  
 c - [03.03.2016 11:54:00]- 60 seconds  
 1 - [03.03.2016 12:09:16]- Max Difference  
 d - [03.03.2016 12:13:36]- Stop holding

Date & Time	Action	#R756	SR756P	#R1859	#R1944	#R1945	#R1973	#R1974	#R1975	#R1976	#R1977	#R1979	#R756P	deltaval	maxval	minval
03.03.2016 12:10:12		123.40	123.78	123.27	123.25	123.26	123.31	123.34	123.27	123.34	123.25	123.35	2.2272	0.53	123.78	123.25
03.03.2016 12:10:14		123.39	123.79	123.27	123.25	123.28	123.32	123.34	123.28	123.34	123.27	123.35	2.2275	0.54	123.79	123.25
03.03.2016 12:10:16		123.40	123.79	123.27	123.26	123.28	123.34	123.34	123.26	123.34	123.26	123.35	2.2276	0.53	123.79	123.26
03.03.2016 12:10:18		123.40	123.79	123.27	123.26	123.28	123.32	123.35	123.28	123.34	123.27	123.36	2.2276	0.53	123.79	123.26
03.03.2016 12:10:20		123.40	123.79	123.27	123.26	123.28	123.33	123.35	123.29	123.35	123.27	123.35	2.2277	0.53	123.79	123.26
03.03.2016 12:10:22		123.41	123.79	123.27	123.26	123.29	123.33	123.35	123.28	123.34	123.27	123.36	2.2278	0.53	123.79	123.26
03.03.2016 12:10:24		123.40	123.79	123.29	123.27	123.28	123.33	123.35	123.29	123.35	123.27	123.36	2.2278	0.52	123.79	123.27
03.03.2016 12:10:26		123.40	123.79	123.28	123.26	123.28	123.34	123.35	123.28	123.36	123.28	123.36	2.2278	0.53	123.79	123.26
03.03.2016 12:10:28		123.42	123.79	123.28	123.27	123.29	123.34	123.35	123.29	123.35	123.27	123.36	2.2275	0.52	123.79	123.27
03.03.2016 12:10:30		123.40	123.80	123.29	123.26	123.28	123.33	123.36	123.28	123.34	123.27	123.36	2.2281	0.54	123.80	123.26
03.03.2016 12:10:32		123.41	123.80	123.28	123.26	123.29	123.33	123.36	123.29	123.34	123.26	123.36	2.2282	0.54	123.80	123.26
03.03.2016 12:10:34		123.41	123.80	123.29	123.27	123.28	123.33	123.35	123.29	123.35	123.27	123.37	2.2281	0.53	123.80	123.27
03.03.2016 12:10:36		123.41	123.79	123.28	123.27	123.29	123.33	123.37	123.30	123.36	123.27	123.37	2.2278	0.52	123.79	123.27
03.03.2016 12:10:38		123.40	123.79	123.28	123.27	123.29	123.34	123.36	123.29	123.35	123.28	123.36	2.2279	0.52	123.79	123.27
03.03.2016 12:10:40		123.40	123.80	123.28	123.26	123.29	123.33	123.36	123.28	123.35	123.27	123.37	2.2282	0.54	123.80	123.26
03.03.2016 12:10:42		123.41	123.80	123.28	123.27	123.29	123.34	123.36	123.29	123.35	123.27	123.35	2.2281	0.53	123.80	123.27
03.03.2016 12:10:44		123.41	123.79	123.28	123.26	123.28	123.34	123.35	123.29	123.36	123.28	123.36	2.2278	0.53	123.79	123.26
03.03.2016 12:10:46		123.42	123.79	123.28	123.26	123.28	123.34	123.35	123.29	123.36	123.26	123.36	2.2277	0.53	123.79	123.26
03.03.2016 12:10:48		123.40	123.79	123.27	123.25	123.28	123.33	123.36	123.27	123.35	123.27	123.36	2.2279	0.54	123.79	123.25
03.03.2016 12:10:50		123.40	123.79	123.28	123.26	123.28	123.34	123.36	123.28	123.34	123.27	123.37	2.2273	0.53	123.79	123.26
03.03.2016 12:10:52		123.40	123.79	123.27	123.25	123.28	123.33	123.34	123.28	123.35	123.27	123.35	2.2275	0.54	123.79	123.25
03.03.2016 12:10:54		123.40	123.79	123.28	123.26	123.29	123.34	123.35	123.28	123.34	123.27	123.35	2.2279	0.53	123.79	123.26
03.03.2016 12:10:56		123.39	123.80	123.28	123.26	123.28	123.33	123.35	123.29	123.34	123.27	123.36	2.2280	0.54	123.80	123.26
03.03.2016 12:10:58		123.40	123.79	123.27	123.26	123.28	123.33	123.35	123.28	123.35	123.27	123.35	2.2276	0.53	123.79	123.26
03.03.2016 12:11:00		123.40	123.80	123.27	123.26	123.29	123.33	123.35	123.29	123.35	123.27	123.36	2.2280	0.54	123.80	123.26
03.03.2016 12:11:02		123.40	123.80	123.28	123.26	123.28	123.33	123.36	123.28	123.35	123.27	123.36	2.2285	0.54	123.80	123.26
03.03.2016 12:11:04		123.41	123.80	123.28	123.26	123.29	123.33	123.36	123.29	123.34	123.28	123.37	2.2283	0.54	123.80	123.26
03.03.2016 12:11:06		123.41	123.80	123.29	123.27	123.30	123.34	123.36	123.30	123.35	123.28	123.36	2.2286	0.53	123.80	123.27
03.03.2016 12:11:08		123.42	123.81	123.30	123.27	123.30	123.35	123.36	123.30	123.36	123.29	123.37	2.2290	0.54	123.81	123.27
03.03.2016 12:11:10		123.42	123.81	123.29	123.27	123.30	123.35	123.36	123.30	123.35	123.28	123.37	2.2288	0.54	123.81	123.27

Performed:  
 03.03.2016 14:20:27

Created:

Reviewed:

Autoclave Sterilization - No. 1234567

# Raw Data Report

## EN285 - Autoclave Validation

XpertLog 3.6.6 - Licensed to: ITL  
 Imported to Autoclave\_ITLDEMO\_on .\LIVES (19.09.2016 14:44:21)

- a - [03.03.2016 11:53:00]- Start equilibration
- b - [03.03.2016 11:53:02]- Stop equilibration; Start holding
- c - [03.03.2016 11:54:00]- 60 seconds
- 1 - [03.03.2016 12:09:16]- Max Difference
- d - [03.03.2016 12:13:36]- Stop holding

### Virtual Channels:

minval=min({#R756};{#R1979};{SR756P})  
 maxval=max({#R756};{#R1979};{SR756P})  
 deltaval=max({#R756};{#R1979};{SR756P})-min({#R756};{#R1979};{SR756P})  
 Equip. Info: EN285 Autoclave; Serial Number: ; Location:

Date & Time	Action	#R756	SR756P	#R1859	#R1944	#R1945	#R1973	#R1974	#R1975	#R1976	#R1977	#R1979	#R756P	deltaval	maxval	minval
03.03.2016 12:11:12		123.43	123.81	123.30	123.27	123.30	123.35	123.37	123.31	123.36	123.29	123.38	2.2293	0.54	123.81	123.27
03.03.2016 12:11:14		123.42	123.81	123.29	123.28	123.30	123.35	123.38	123.30	123.35	123.30	123.38	2.2292	0.53	123.81	123.28
03.03.2016 12:11:16		123.42	123.81	123.30	123.28	123.29	123.35	123.38	123.30	123.36	123.30	123.38	2.2293	0.53	123.81	123.28
03.03.2016 12:11:18		123.42	123.82	123.30	123.29	123.31	123.36	123.38	123.32	123.37	123.30	123.38	2.2294	0.53	123.82	123.29
03.03.2016 12:11:20		123.43	123.82	123.30	123.28	123.31	123.35	123.38	123.31	123.36	123.30	123.38	2.2295	0.54	123.82	123.28
03.03.2016 12:11:22		123.43	123.83	123.30	123.28	123.30	123.36	123.38	123.32	123.37	123.30	123.39	2.2301	0.55	123.83	123.28
03.03.2016 12:11:24		123.44	123.82	123.31	123.28	123.30	123.35	123.38	123.32	123.38	123.31	123.38	2.2295	0.54	123.82	123.28
03.03.2016 12:11:26		123.43	123.82	123.30	123.29	123.32	123.36	123.38	123.31	123.37	123.30	123.38	2.2295	0.53	123.82	123.29
03.03.2016 12:11:28		123.44	123.82	123.31	123.29	123.31	123.35	123.38	123.31	123.38	123.30	123.39	2.2296	0.53	123.82	123.29
03.03.2016 12:11:30		123.44	123.82	123.31	123.29	123.30	123.36	123.37	123.31	123.38	123.30	123.38	2.2298	0.53	123.82	123.29
03.03.2016 12:11:32		123.42	123.82	123.29	123.29	123.31	123.36	123.38	123.32	123.37	123.30	123.39	2.2298	0.53	123.82	123.29
03.03.2016 12:11:34		123.43	123.82	123.30	123.29	123.32	123.36	123.38	123.31	123.37	123.30	123.39	2.2295	0.53	123.82	123.29
03.03.2016 12:11:36		123.43	123.82	123.30	123.29	123.31	123.35	123.39	123.32	123.38	123.29	123.39	2.2299	0.53	123.82	123.29
03.03.2016 12:11:38		123.43	123.81	123.30	123.28	123.31	123.36	123.38	123.31	123.37	123.29	123.38	2.2288	0.53	123.81	123.28
03.03.2016 12:11:40		123.43	123.81	123.31	123.28	123.30	123.35	123.38	123.32	123.36	123.30	123.38	2.2292	0.53	123.81	123.28
03.03.2016 12:11:42		123.43	123.82	123.30	123.28	123.31	123.36	123.38	123.32	123.36	123.30	123.37	2.2294	0.54	123.82	123.28
03.03.2016 12:11:44		123.43	123.81	123.29	123.27	123.31	123.35	123.38	123.31	123.36	123.30	123.39	2.2289	0.54	123.81	123.27
03.03.2016 12:11:46		123.42	123.81	123.30	123.27	123.30	123.34	123.37	123.31	123.36	123.29	123.37	2.2288	0.54	123.81	123.27
03.03.2016 12:11:48		123.42	123.81	123.29	123.28	123.30	123.35	123.36	123.29	123.36	123.29	123.36	2.2291	0.53	123.81	123.28
03.03.2016 12:11:50		123.43	123.80	123.29	123.28	123.29	123.36	123.38	123.31	123.36	123.29	123.37	2.2283	0.52	123.80	123.28
03.03.2016 12:11:52		123.42	123.80	123.29	123.28	123.30	123.34	123.38	123.31	123.36	123.29	123.37	2.2285	0.52	123.80	123.28
03.03.2016 12:11:54		123.42	123.81	123.29	123.27	123.30	123.34	123.37	123.30	123.36	123.28	123.38	2.2289	0.54	123.81	123.27
03.03.2016 12:11:56		123.42	123.81	123.29	123.27	123.30	123.34	123.36	123.31	123.36	123.28	123.38	2.2288	0.54	123.81	123.27
03.03.2016 12:11:58		123.41	123.81	123.30	123.28	123.29	123.34	123.38	123.30	123.35	123.28	123.38	2.2290	0.53	123.81	123.28
03.03.2016 12:12:00		123.42	123.81	123.30	123.28	123.30	123.34	123.36	123.31	123.36	123.29	123.37	2.2292	0.53	123.81	123.28
03.03.2016 12:12:02		123.42	123.82	123.29	123.27	123.30	123.34	123.37	123.30	123.36	123.29	123.38	2.2295	0.55	123.82	123.27
03.03.2016 12:12:04		123.41	123.82	123.30	123.28	123.30	123.35	123.38	123.30	123.36	123.29	123.38	2.2296	0.54	123.82	123.28
03.03.2016 12:12:06		123.42	123.82	123.30	123.29	123.31	123.36	123.37	123.31	123.36	123.30	123.38	2.2297	0.53	123.82	123.29
03.03.2016 12:12:08		123.42	123.82	123.30	123.29	123.31	123.35	123.38	123.30	123.38	123.30	123.39	2.2296	0.53	123.82	123.29
03.03.2016 12:12:10		123.43	123.82	123.30	123.28	123.31	123.36	123.38	123.32	123.38	123.30	123.39	2.2297	0.54	123.82	123.28

Performed:  
 03.03.2016 14:20:27

Created:

Reviewed:

# Raw Data Report

## EN285 - Autoclave Validation

XpertLog 3.6.6 - Licensed to: ITL  
 Imported to Autoclave\_ITLDEMO\_on .\LIVES (19.09.2016 14:44:21)

### Virtual Channels:

minval=min({#R756};{#R1979};{SR756P})  
 maxval=max({#R756};{#R1979};{SR756P})  
 deltaval=max({#R756};{#R1979};{SR756P})-min({#R756};{#R1979};{SR756P})  
 Equip. Info: EN285 Autoclave; Serial Number: ; Location:

a - [03.03.2016 11:53:00]- Start equilibration  
 b - [03.03.2016 11:53:02]- Stop equilibration; Start holding  
 c - [03.03.2016 11:54:00]- 60 seconds  
 1 - [03.03.2016 12:09:16]- Max Difference  
 d - [03.03.2016 12:13:36]- Stop holding

Date & Time	Action	#R756	SR756P	#R1859	#R1944	#R1945	#R1973	#R1974	#R1975	#R1976	#R1977	#R1979	#R756P	deltaval	maxval	minval
03.03.2016 12:12:12		123.42	123.82	123.31	123.29	123.30	123.37	123.38	123.31	123.38	123.30	123.40	2.2297	0.53	123.82	123.29
03.03.2016 12:12:14		123.44	123.82	123.31	123.28	123.32	123.36	123.38	123.31	123.38	123.30	123.39	2.2297	0.54	123.82	123.28
03.03.2016 12:12:16		123.43	123.83	123.31	123.29	123.31	123.36	123.38	123.32	123.37	123.30	123.38	2.2301	0.54	123.83	123.29
03.03.2016 12:12:18		123.44	123.83	123.31	123.28	123.31	123.36	123.38	123.32	123.38	123.30	123.40	2.2301	0.55	123.83	123.28
03.03.2016 12:12:20		123.44	123.83	123.30	123.29	123.31	123.36	123.38	123.32	123.37	123.30	123.38	2.2302	0.54	123.83	123.29
03.03.2016 12:12:22		123.44	123.82	123.32	123.30	123.31	123.36	123.38	123.31	123.38	123.31	123.39	2.2300	0.52	123.82	123.30
03.03.2016 12:12:24		123.44	123.82	123.31	123.29	123.31	123.36	123.38	123.32	123.38	123.30	123.39	2.2300	0.53	123.82	123.29
03.03.2016 12:12:26		123.43	123.83	123.32	123.29	123.31	123.36	123.39	123.31	123.38	123.31	123.39	2.2302	0.54	123.83	123.29
03.03.2016 12:12:28		123.43	123.82	123.30	123.29	123.31	123.36	123.38	123.33	123.37	123.30	123.39	2.2300	0.53	123.82	123.29
03.03.2016 12:12:30		123.44	123.83	123.32	123.29	123.31	123.36	123.40	123.32	123.38	123.31	123.39	2.2301	0.54	123.83	123.29
03.03.2016 12:12:32		123.44	123.82	123.31	123.29	123.30	123.35	123.39	123.32	123.37	123.31	123.39	2.2300	0.53	123.82	123.29
03.03.2016 12:12:34		123.43	123.82	123.30	123.29	123.31	123.36	123.37	123.32	123.37	123.30	123.40	2.2296	0.53	123.82	123.29
03.03.2016 12:12:36		123.44	123.82	123.31	123.29	123.30	123.36	123.38	123.31	123.38	123.30	123.38	2.2295	0.53	123.82	123.29
03.03.2016 12:12:38		123.43	123.82	123.31	123.29	123.30	123.36	123.37	123.31	123.38	123.30	123.38	2.2298	0.53	123.82	123.29
03.03.2016 12:12:40		123.44	123.81	123.30	123.28	123.31	123.36	123.38	123.32	123.37	123.30	123.38	2.2291	0.53	123.81	123.28
03.03.2016 12:12:42		123.42	123.81	123.30	123.29	123.30	123.35	123.38	123.31	123.37	123.30	123.38	2.2292	0.52	123.81	123.29
03.03.2016 12:12:44		123.42	123.81	123.30	123.29	123.31	123.35	123.37	123.31	123.37	123.29	123.39	2.2292	0.52	123.81	123.29
03.03.2016 12:12:46		123.42	123.81	123.30	123.29	123.29	123.34	123.38	123.31	123.36	123.29	123.37	2.2289	0.52	123.81	123.29
03.03.2016 12:12:48		123.43	123.81	123.30	123.28	123.31	123.35	123.38	123.31	123.37	123.28	123.37	2.2289	0.53	123.81	123.28
03.03.2016 12:12:50		123.43	123.81	123.31	123.28	123.30	123.35	123.38	123.31	123.37	123.29	123.39	2.2292	0.53	123.81	123.28
03.03.2016 12:12:52		123.42	123.82	123.30	123.28	123.30	123.35	123.38	123.30	123.37	123.30	123.38	2.2294	0.54	123.82	123.28
03.03.2016 12:12:54		123.42	123.81	123.30	123.28	123.30	123.35	123.38	123.31	123.37	123.30	123.38	2.2293	0.53	123.81	123.28
03.03.2016 12:12:56		123.42	123.82	123.30	123.28	123.32	123.36	123.38	123.31	123.37	123.29	123.39	2.2300	0.54	123.82	123.28
03.03.2016 12:12:58		123.43	123.82	123.32	123.28	123.31	123.36	123.38	123.31	123.38	123.29	123.38	2.2299	0.54	123.82	123.28
03.03.2016 12:13:00		123.43	123.82	123.31	123.28	123.32	123.36	123.39	123.31	123.38	123.31	123.39	2.2300	0.54	123.82	123.28
03.03.2016 12:13:02		123.43	123.83	123.31	123.29	123.32	123.36	123.39	123.32	123.38	123.30	123.39	2.2304	0.54	123.83	123.29
03.03.2016 12:13:04		123.43	123.83	123.31	123.29	123.32	123.36	123.39	123.32	123.38	123.30	123.39	2.2302	0.54	123.83	123.29
03.03.2016 12:13:06		123.43	123.82	123.31	123.30	123.32	123.37	123.38	123.32	123.38	123.30	123.40	2.2299	0.52	123.82	123.30
03.03.2016 12:13:08		123.44	123.83	123.31	123.29	123.32	123.36	123.39	123.33	123.39	123.30	123.40	2.2303	0.54	123.83	123.29
03.03.2016 12:13:10		123.44	123.83	123.32	123.29	123.32	123.36	123.39	123.32	123.39	123.31	123.39	2.2301	0.54	123.83	123.29

Performed:  
 03.03.2016 14:20:27

Created:

Reviewed:

# Raw Data Report

## EN285 - Autoclave Validation

XpertLog 3.6.6 - Licensed to: ITL  
 Imported to Autoclave\_ITLDEMO\_on .\LIVES (19.09.2016 14:44:21)

Virtual Channels:  
 minval=min({#R756};{#R1979};{SR756P})  
 maxval=max({#R756};{#R1979};{SR756P})  
 deltaval=max({#R756};{#R1979};{SR756P})-min({#R756};{#R1979};{SR756P})  
 Equip. Info: EN285 Autoclave; Serial Number: ; Location:

a - [03.03.2016 11:53:00]- Start equilibration  
 b - [03.03.2016 11:53:02]- Stop equilibration; Start holding  
 c - [03.03.2016 11:54:00]- 60 seconds  
 1 - [03.03.2016 12:09:16]- Max Difference  
 d - [03.03.2016 12:13:36]- Stop holding

Date & Time	Action	#R756	SR756P	#R1859	#R1944	#R1945	#R1973	#R1974	#R1975	#R1976	#R1977	#R1979	#R756P	deltaval	maxval	minval
03.03.2016 12:13:12		123.44	123.83	123.32	123.30	123.32	123.37	123.39	123.32	123.39	123.30	123.39	2.2304	0.53	123.83	123.30
03.03.2016 12:13:14		123.44	123.83	123.31	123.29	123.32	123.37	123.39	123.32	123.38	123.31	123.40	2.2302	0.54	123.83	123.29
03.03.2016 12:13:16		123.43	123.83	123.32	123.29	123.32	123.37	123.40	123.32	123.38	123.31	123.39	2.2302	0.54	123.83	123.29
03.03.2016 12:13:18		123.45	123.83	123.31	123.29	123.32	123.37	123.38	123.32	123.38	123.31	123.40	2.2303	0.54	123.83	123.29
03.03.2016 12:13:20		123.44	123.83	123.31	123.30	123.31	123.37	123.39	123.32	123.38	123.31	123.40	2.2304	0.53	123.83	123.30
03.03.2016 12:13:22		123.45	123.82	123.31	123.29	123.32	123.36	123.39	123.32	123.39	123.31	123.39	2.2300	0.53	123.82	123.29
03.03.2016 12:13:24		123.43	123.82	123.32	123.28	123.32	123.36	123.39	123.32	123.39	123.30	123.39	2.2294	0.54	123.82	123.28
03.03.2016 12:13:26		123.41	123.61	123.30	123.29	123.28	123.35	123.39	123.30	123.37	123.31	123.39	2.2150	0.33	123.61	123.28
03.03.2016 12:13:28		123.27	123.14	123.15	123.20	123.10	123.21	123.29	123.15	123.26	123.18	123.24	2.1834	0.19	123.29	123.10
03.03.2016 12:13:30		122.93	122.63	122.81	122.92	122.71	122.90	122.98	122.82	122.94	122.86	122.87	2.1488	0.35	122.98	122.63
03.03.2016 12:13:32		122.50	122.17	122.36	122.51	122.25	122.46	122.54	122.38	122.51	122.39	122.39	2.1181	0.37	122.54	122.17
03.03.2016 12:13:34		122.04	121.70	121.88	122.06	121.76	121.99	122.05	121.91	122.02	121.91	121.90	2.0873	0.36	122.06	121.70
03.03.2016 12:13:36	d	121.55	121.24	121.39	121.58	121.27	121.49	121.56	121.42	121.55	121.41	121.41	2.0572	0.34	121.58	121.24
03.03.2016 12:13:38		121.06	120.77	120.89	121.10	120.77	120.99	121.05	120.94	121.06	120.91	120.91	2.0269	0.33	121.10	120.77
03.03.2016 12:13:40		120.57	120.30	120.40	120.62	120.27	120.49	120.55	120.43	120.57	120.40	120.38	1.9970	0.35	120.62	120.27
03.03.2016 12:13:42		120.09	119.85	119.90	120.11	119.78	119.98	120.04	119.93	120.07	119.90	119.89	1.9684	0.33	120.11	119.78
03.03.2016 12:13:44		119.59	119.40	119.41	119.63	119.27	119.48	119.55	119.44	119.59	119.39	119.39	1.9408	0.36	119.63	119.27
03.03.2016 12:13:46		119.11	118.94	118.92	119.12	118.77	118.98	119.05	118.95	119.10	118.90	118.89	1.9128	0.35	119.12	118.77
03.03.2016 12:13:48		118.62	118.51	118.43	118.63	118.29	118.49	118.55	118.46	118.61	118.41	118.40	1.8863	0.34	118.63	118.29
03.03.2016 12:13:50		118.14	118.09	117.95	118.14	117.82	118.00	118.07	117.97	118.13	117.92	117.91	1.8610	0.32	118.14	117.82
03.03.2016 12:13:52		117.68	117.65	117.48	117.67	117.33	117.51	117.59	117.51	117.66	117.44	117.43	1.8349	0.35	117.68	117.33
03.03.2016 12:13:54		117.21	117.24	117.02	117.19	116.87	117.05	117.10	117.03	117.19	116.96	116.96	1.8114	0.37	117.24	116.87
03.03.2016 12:13:56		116.75	116.83	116.55	116.74	116.41	116.58	116.65	116.57	116.72	116.50	116.50	1.7874	0.42	116.83	116.41
03.03.2016 12:13:58		116.31	116.44	116.10	116.28	115.95	116.13	116.19	116.12	116.27	116.05	116.06	1.7648	0.49	116.44	115.95
03.03.2016 12:14:00		115.87	116.04	115.67	115.83	115.52	115.69	115.74	115.68	115.82	115.61	115.63	1.7420	0.52	116.04	115.52
03.03.2016 12:15:04														1.75	101.99	100.24
03.03.2016 12:24:00		76.29		55.81	43.42	55.54	62.25	56.02	67.55	71.61	74.60	87.21	0.1188			
03.03.2016 12:34:00		72.05		55.59	56.22	59.68	67.79	63.85	79.12	79.91	77.12	85.06	0.1037			
03.03.2016 12:44:00		69.57		60.13	63.40	63.03	71.36	71.62	84.90	83.14	82.42	80.45	0.0979			
03.03.2016 12:54:00		69.55		64.73	67.23	66.44	79.73	75.94	88.64	85.67	84.16	74.24	0.0951			

Performed:  
 03.03.2016 14:20:27

Created:

Reviewed:

# Raw Data Report

## EN285 - Autoclave Validation

XpertLog 3.6.6 - Licensed to: ITL  
 Imported to Autoclave\_ITLDEMO\_on .\LIVES (19.09.2016 14:44:21)

Virtual Channels:  
 minval=min({#R756};{#R1979};{SR756P})  
 maxval=max({#R756};{#R1979};{SR756P})  
 deltaval=max({#R756};{#R1979};{SR756P})-min({#R756};{#R1979};{SR756P})  
 Equip. Info: EN285 Autoclave; Serial Number: ; Location:

- a - [03.03.2016 11:53:00]- Start equilibration
- b - [03.03.2016 11:53:02]- Stop equilibration; Start holding
- c - [03.03.2016 11:54:00]- 60 seconds
- 1 - [03.03.2016 12:09:16]- Max Difference
- d - [03.03.2016 12:13:36]- Stop holding

Date & Time	Action	#R756	SR756P	#R1859	#R1944	#R1945	#R1973	#R1974	#R1975	#R1976	#R1977	#R1979	#R756P	deltaval	maxval	minval
03.03.2016 13:04:00		70.81		68.96	70.30	69.74	83.99	79.41	91.45	87.94	83.71	68.78	0.0935			
03.03.2016 13:14:00		70.14		67.18	71.61	71.88	74.11	77.20	84.67	79.41	83.60	27.94	1.0262			
03.03.2016 13:24:00		54.46		51.25	59.89	48.60	57.23	50.40	49.25	52.27	76.98	20.65	1.0328			
03.03.2016 13:30:00	OFF	47.51		44.00	53.06	40.03	50.95	40.67	38.10	43.19	72.50	20.53	1.0310			

Performed:  
 03.03.2016 14:20:27

Created:

Reviewed:

Autoclave Sterilization - No. 1234567



# Verification report

## EN285 Verification

XpertLog 3.6.6 - Licensed to: ITL  
 Imported to Autoclave\_ITLDEMO\_on .\LIVES (19.09.2016 14:44:21)  
 Block: RTC-157 C °C; SN: 591926-00087; Int Control; Probe: HART; SN: A38296

Verif:  
 at 121.0 - Temp. = 121.0 C; Error Allowed = 0.30(+/-C); Check Time = 3:00 (mm:ss)  
 RTD:  
 Drift Allowed = 0.10(+/-C); Dev. From Refer. Allowed = 2.00(+/-C); Check Time For Drift = 2:00 (mm:ss)

Action	Date & Time	Probe	#R1859	#R1944	#R1945	#R1973	#R1974	#R1975	#R1976	#R1977	#R1979
Func.	(dd.MM.yyyy HH:mm:ss)	T (deg C)	T (deg C)	T (deg C)	T (deg C)	T (deg C)	T (deg C)	T (deg C)	T (deg C)	T (deg C)	T (deg C)
Set As		Deviation	Deviation	Deviation	Deviation	Deviation	Deviation	Deviation	Deviation	Deviation	Deviation
Used Calib.:		#1	#1	#1	#1	#1	#1	#1	#1	#1	#1
#1: EN285 Calibration		Pass	Pass	Pass	Pass	Pass	Pass	Pass	Pass	Pass	Pass
Verification at 121.0	03.03.2016 15:40:04	120.858	-0.02	-0.01	-0.02	-0.02	-0.02	+0.00	-0.07	-0.02	-0.01
	03.03.2016 15:40:14	120.862	-0.01	-0.01	-0.01	-0.01	-0.01	+0.00	-0.07	-0.02	-0.02
	03.03.2016 15:40:24	120.857	-0.01	-0.01	-0.01	-0.01	-0.02	+0.00	-0.07	-0.02	-0.01
	03.03.2016 15:40:34	120.858	-0.01	-0.01	-0.02	-0.01	-0.02	-0.01	-0.08	-0.03	-0.01
	03.03.2016 15:40:44	120.859	-0.02	-0.01	-0.02	-0.02	-0.02	+0.00	-0.08	-0.03	-0.01
	03.03.2016 15:40:54	120.859	-0.01	-0.01	-0.01	-0.01	-0.02	+0.00	-0.07	-0.03	-0.02
	03.03.2016 15:41:04	120.858	-0.01	-0.01	-0.01	-0.01	-0.02	-0.01	-0.08	-0.02	-0.01
	03.03.2016 15:41:14	120.862	-0.02	-0.01	-0.01	-0.01	-0.02	-0.01	-0.08	-0.02	-0.01
	03.03.2016 15:41:24	120.862	-0.01	-0.01	-0.01	-0.02	-0.02	-0.01	-0.07	-0.02	-0.02
	03.03.2016 15:41:34	120.863	-0.01	-0.01	-0.02	-0.01	-0.02	-0.01	-0.07	-0.02	-0.01
	03.03.2016 15:41:44	120.864	-0.01	-0.01	-0.01	-0.01	-0.01	+0.00	-0.07	-0.02	-0.01
	03.03.2016 15:41:54	120.860	-0.01	+0.00	-0.01	+0.00	-0.01	+0.00	-0.06	-0.03	-0.01
	03.03.2016 15:42:04	120.861	-0.01	-0.01	-0.01	-0.01	-0.01	+0.00	-0.08	-0.01	-0.01
	03.03.2016 15:42:14	120.864	+0.00	-0.01	-0.01	+0.00	-0.01	+0.00	-0.07	-0.02	+0.00
	03.03.2016 15:42:24	120.866	-0.02	-0.01	-0.02	-0.01	-0.02	-0.01	-0.07	-0.03	-0.01
	03.03.2016 15:42:34	120.863	+0.00	+0.00	-0.01	+0.00	-0.01	+0.00	-0.07	-0.02	-0.02
	03.03.2016 15:42:44	120.863	-0.01	-0.01	-0.01	-0.01	-0.02	+0.00	-0.08	-0.01	-0.01
	03.03.2016 15:42:54	120.865	+0.00	-0.01	-0.02	-0.01	-0.02	+0.00	-0.08	-0.02	+0.00
	03.03.2016 15:43:04	120.863	-0.01	-0.01	-0.01	-0.01	-0.01	+0.00	-0.07	-0.02	-0.01
	Min.	+120.857	-0.02	-0.01	-0.02	-0.02	-0.02	-0.01	-0.08	-0.03	-0.02
	Avg.	+120.861	-0.011	-0.009	-0.013	-0.010	-0.016	-0.003	-0.073	-0.022	-0.011
	Max.	+120.866	+0.00	+0.00	-0.01	+0.00	-0.01	+0.00	-0.06	-0.01	+0.00
M Value			+0.99998	+0.99983	+0.99950	+0.99969	+0.99973	+0.99980	+0.99970	+0.99979	+0.99994
B Value			-0.06052	-0.02684	+0.00741	-0.00298	+0.00936	-0.03534	-0.00189	-0.00398	-0.01739
Status			Pass	Pass	Pass	Pass	Pass	Pass	Pass	Pass	Pass

Performed:  
 03.03.2016 15:43:54

Created:

Reviewed:

# Calibration report

## EN285 Calibration

XpertLog 3.6.6 - Licensed to: ITL  
 Imported to Autoclave\_ITLDEMO\_ on .\LIVES (19.09.2016 14:44:20)  
 Block: RTC-157 C °C; SN: 591926-00087; Int Control; Probe: HART; SN: A38296

Calib:  
 at 90.0 - Temp. = 90.0 C; Error Allowed = 1.00(+/-C); Check Time = 3:00 (mm:ss)  
 at 130.0 - Temp. = 130.0 C; Error Allowed = 1.00(+/-C); Check Time = 3:00 (mm:ss)

Verif:  
 at 121.0 - Temp. = 121.0 C; Error Allowed = 0.30(+/-C); Check Time = 3:00 (mm:ss)

RTD:  
 Drift Allowed = 0.10(+/-C); Dev. From Refer. Allowed = 2.00(+/-C); Check Time For Drift = 2:00 (mm:ss)

Action	Date & Time	Probe	#R1859	#R1944	#R1945	#R1973	#R1974	#R1975	#R1976	#R1977	#R1979
Func.	(dd.MM.yyyy HH:mm:ss)	T (deg C)	T (deg C)	T (deg C)	T (deg C)	T (deg C)	T (deg C)	T (deg C)	T (deg C)	T (deg C)	T (deg C)
Set As		Deviation	Deviation	Deviation	Deviation	Deviation	Deviation	Deviation	Deviation	Deviation	Deviation
Used Calib.:		Factory	Factory	Factory	Factory	Factory	Factory	Factory	Factory	Factory	Factory
Calibration at 90.0	03.03.2016 08:53:56	89.861	+0.05	+0.05	+0.03	+0.03	+0.01	+0.05	+0.03	+0.02	+0.03
	03.03.2016 08:54:06	89.861	+0.06	+0.03	+0.03	+0.03	+0.01	+0.05	+0.02	+0.02	+0.03
	03.03.2016 08:54:16	89.860	+0.06	+0.04	+0.03	+0.03	+0.02	+0.05	+0.02	+0.02	+0.02
	03.03.2016 08:54:26	89.860	+0.06	+0.04	+0.03	+0.04	+0.02	+0.06	+0.03	+0.02	+0.03
	03.03.2016 08:54:36	89.858	+0.07	+0.04	+0.03	+0.04	+0.02	+0.05	+0.02	+0.02	+0.02
	03.03.2016 08:54:46	89.864	+0.06	+0.05	+0.04	+0.03	+0.02	+0.05	+0.03	+0.03	+0.02
	03.03.2016 08:54:56	89.862	+0.06	+0.04	+0.03	+0.03	+0.02	+0.06	+0.03	+0.02	+0.03
	03.03.2016 08:55:06	89.860	+0.06	+0.06	+0.04	+0.03	+0.01	+0.05	+0.04	+0.02	+0.02
	03.03.2016 08:55:16	89.862	+0.05	+0.04	+0.05	+0.03	+0.01	+0.06	+0.03	+0.03	+0.02
	03.03.2016 08:55:26	89.863	+0.07	+0.04	+0.04	+0.03	+0.02	+0.05	+0.03	+0.03	+0.02
	03.03.2016 08:55:36	89.859	+0.06	+0.04	+0.05	+0.04	+0.02	+0.06	+0.04	+0.03	+0.02
	03.03.2016 08:55:46	89.862	+0.06	+0.04	+0.03	+0.03	+0.02	+0.06	+0.03	+0.03	+0.02
	03.03.2016 08:55:56	89.868	+0.07	+0.04	+0.03	+0.02	+0.01	+0.05	+0.03	+0.02	+0.02
	03.03.2016 08:56:06	89.864	+0.07	+0.04	+0.04	+0.04	+0.02	+0.06	+0.03	+0.03	+0.02
	03.03.2016 08:56:16	89.863	+0.07	+0.04	+0.04	+0.03	+0.01	+0.05	+0.03	+0.02	+0.03
	03.03.2016 08:56:26	89.861	+0.07	+0.05	+0.05	+0.05	+0.02	+0.05	+0.03	+0.03	+0.02
	03.03.2016 08:56:36	89.865	+0.07	+0.05	+0.04	+0.03	+0.02	+0.06	+0.03	+0.02	+0.02
	03.03.2016 08:56:46	89.864	+0.07	+0.04	+0.04	+0.02	+0.01	+0.06	+0.04	+0.02	+0.03
	03.03.2016 08:56:56	89.861	+0.06	+0.05	+0.04	+0.03	+0.02	+0.06	+0.04	+0.03	+0.03
		Min.	+89.858	+0.05	+0.03	+0.03	+0.02	+0.01	+0.05	+0.02	+0.02
	Avg.	+89.862	+0.063	+0.043	+0.037	+0.032	+0.016	+0.055	+0.031	+0.024	+0.024
	Max.	+89.868	+0.07	+0.06	+0.05	+0.05	+0.02	+0.06	+0.04	+0.03	+0.03
Calibration at 130.0	03.03.2016 09:12:16	129.781	+0.06	+0.04	+0.06	+0.04	+0.02	+0.06	+0.04	+0.03	+0.02
	03.03.2016 09:12:26	129.776	+0.06	+0.05	+0.06	+0.04	+0.02	+0.06	+0.04	+0.03	+0.02

Performed:  
 03.03.2016 09:37:03

Created:

Reviewed:

# Calibration report

## EN285 Calibration

XpertLog 3.6.6 - Licensed to: ITL

Imported to Autoclave\_ITLDEMO\_ on .\LIVES (19.09.2016 14:44:20)

Block: RTC-157 C °C; SN: 591926-00087; Int Control; Probe: HART; SN: A38296

Calib:

at 90.0 - Temp. = 90.0 C; Error Allowed = 1.00(+/-C); Check Time = 3:00 (mm:ss)

at 130.0 - Temp. = 130.0 C; Error Allowed = 1.00(+/-C); Check Time = 3:00 (mm:ss)

Verif:

at 121.0 - Temp. = 121.0 C; Error Allowed = 0.30(+/-C); Check Time = 3:00 (mm:ss)

RTD:

Drift Allowed = 0.10(+/-C); Dev. From Refer. Allowed = 2.00(+/-C); Check Time For Drift = 2:00 (mm:ss)

Action	Date & Time	Probe	#R1859	#R1944	#R1945	#R1973	#R1974	#R1975	#R1976	#R1977	#R1979
Calibration at 130.0	03.03.2016 09:12:36	129.780	+0.06	+0.05	+0.05	+0.04	+0.02	+0.06	+0.04	+0.03	+0.03
	03.03.2016 09:12:46	129.778	+0.06	+0.04	+0.06	+0.05	+0.03	+0.06	+0.04	+0.03	+0.02
	03.03.2016 09:12:56	129.775	+0.07	+0.06	+0.06	+0.05	+0.03	+0.07	+0.05	+0.04	+0.04
	03.03.2016 09:13:06	129.780	+0.06	+0.05	+0.06	+0.04	+0.02	+0.06	+0.04	+0.03	+0.02
	03.03.2016 09:13:16	129.776	+0.06	+0.05	+0.05	+0.04	+0.03	+0.05	+0.04	+0.03	+0.03
	03.03.2016 09:13:26	129.780	+0.06	+0.06	+0.05	+0.04	+0.02	+0.05	+0.04	+0.03	+0.03
	03.03.2016 09:13:36	129.779	+0.06	+0.05	+0.04	+0.04	+0.02	+0.07	+0.04	+0.03	+0.02
	03.03.2016 09:13:46	129.781	+0.06	+0.05	+0.06	+0.04	+0.02	+0.06	+0.05	+0.04	+0.02
	03.03.2016 09:13:56	129.778	+0.06	+0.05	+0.05	+0.04	+0.03	+0.06	+0.04	+0.02	+0.02
	03.03.2016 09:14:06	129.780	+0.07	+0.04	+0.05	+0.04	+0.02	+0.06	+0.04	+0.03	+0.03
	03.03.2016 09:14:16	129.778	+0.06	+0.05	+0.05	+0.04	+0.02	+0.06	+0.04	+0.03	+0.02
	03.03.2016 09:14:26	129.780	+0.06	+0.05	+0.05	+0.03	+0.03	+0.05	+0.04	+0.03	+0.02
	03.03.2016 09:14:36	129.775	+0.07	+0.05	+0.08	+0.06	+0.04	+0.07	+0.05	+0.04	+0.04
	03.03.2016 09:14:46	129.778	+0.06	+0.04	+0.06	+0.05	+0.03	+0.07	+0.03	+0.03	+0.02
	03.03.2016 09:14:56	129.780	+0.06	+0.04	+0.06	+0.04	+0.02	+0.07	+0.04	+0.03	+0.02
	03.03.2016 09:15:06	129.778	+0.06	+0.05	+0.06	+0.04	+0.02	+0.06	+0.04	+0.03	+0.03
	03.03.2016 09:15:16	129.782	+0.07	+0.05	+0.05	+0.05	+0.03	+0.06	+0.04	+0.03	+0.02
	Min.	+129.775	+0.06	+0.04	+0.04	+0.03	+0.02	+0.05	+0.03	+0.02	+0.02
	Avg.	+129.779	+0.062	+0.048	+0.056	+0.043	+0.025	+0.061	+0.041	+0.031	+0.025
	Max.	+129.782	+0.07	+0.06	+0.08	+0.06	+0.04	+0.07	+0.05	+0.04	+0.04
Verification at 121.0	03.03.2016 09:22:36	120.787	+0.02	+0.00	+0.01	+0.01	+0.00	-0.01	+0.00	+0.00	+0.00
	03.03.2016 09:22:46	120.789	+0.01	+0.01	+0.00	+0.00	+0.01	+0.00	+0.01	+0.01	+0.00
	03.03.2016 09:22:56	120.786	+0.01	+0.00	+0.01	+0.01	+0.00	+0.01	+0.01	+0.01	+0.00
	03.03.2016 09:23:06	120.791	+0.00	+0.01	+0.01	+0.00	+0.01	+0.01	+0.01	+0.00	+0.01
	03.03.2016 09:23:16	120.791	+0.01	+0.01	+0.00	+0.00	+0.01	+0.00	+0.00	+0.01	+0.01
	03.03.2016 09:23:26	120.790	+0.01	+0.01	+0.00	+0.00	+0.00	+0.01	+0.01	+0.01	+0.01
	03.03.2016 09:23:36	120.792	+0.02	+0.01	+0.00	+0.01	+0.01	+0.01	+0.01	+0.01	+0.01
	03.03.2016 09:23:46	120.795	+0.02	+0.01	+0.01	+0.01	+0.01	+0.01	+0.01	+0.01	+0.01

Performed:  
03.03.2016 09:37:03

Created:

Reviewed:

# Calibration report

## EN285 Calibration

XpertLog 3.6.6 - Licensed to: ITL

Imported to Autoclave\_ITLDEMO\_on .\LIVES (19.09.2016 14:44:20)

Block: RTC-157 C °C; SN: 591926-00087; Int Control; Probe: HART; SN: A38296

Calib:

at 90.0 - Temp. = 90.0 C; Error Allowed = 1.00(+/-C); Check Time = 3:00 (mm:ss)

at 130.0 - Temp. = 130.0 C; Error Allowed = 1.00(+/-C); Check Time = 3:00 (mm:ss)

Verif:

at 121.0 - Temp. = 121.0 C; Error Allowed = 0.30(+/-C); Check Time = 3:00 (mm:ss)

RTD:

Drift Allowed = 0.10(+/-C); Dev. From Refer. Allowed = 2.00(+/-C); Check Time For Drift = 2:00 (mm:ss)

Action	Date & Time	Probe	#R1859	#R1944	#R1945	#R1973	#R1974	#R1975	#R1976	#R1977	#R1979
Verification at 121.0	03.03.2016 09:23:56	120.793	+0.01	+0.01	+0.02	+0.01	+0.01	+0.01	+0.00	+0.01	+0.01
	03.03.2016 09:24:06	120.792	+0.02	+0.02	+0.02	+0.00	+0.01	+0.01	+0.02	+0.01	+0.00
	03.03.2016 09:24:16	120.792	+0.02	+0.02	+0.01	+0.00	+0.00	+0.01	+0.00	+0.02	+0.00
	03.03.2016 09:24:26	120.799	+0.01	+0.00	+0.00	-0.01	-0.01	+0.00	+0.00	+0.00	+0.01
	03.03.2016 09:24:36	120.796	+0.01	+0.00	+0.01	+0.00	+0.00	+0.01	+0.00	+0.01	+0.00
	03.03.2016 09:24:46	120.800	+0.01	+0.00	+0.00	+0.00	+0.00	+0.00	+0.01	+0.00	+0.00
	03.03.2016 09:24:56	120.799	+0.02	+0.00	+0.00	+0.00	+0.00	+0.01	-0.01	+0.01	+0.00
	03.03.2016 09:25:06	120.797	+0.01	+0.00	+0.01	+0.00	+0.00	+0.00	+0.00	+0.01	+0.00
	03.03.2016 09:25:16	120.799	+0.01	+0.01	+0.00	-0.01	+0.00	+0.01	+0.01	+0.00	+0.01
	03.03.2016 09:25:26	120.800	+0.00	-0.01	+0.00	+0.01	+0.01	+0.01	+0.00	+0.00	+0.00
	03.03.2016 09:25:36	120.794	+0.02	+0.02	+0.02	+0.02	+0.01	+0.02	+0.01	+0.01	+0.02
	Min.	+120.786	+0.00	-0.01	+0.00	-0.01	-0.01	-0.01	-0.01	+0.00	+0.00
	Avg.	+120.794	+0.013	+0.007	+0.007	+0.003	+0.004	+0.007	+0.005	+0.007	+0.005
	Max.	+120.800	+0.02	+0.02	+0.02	+0.02	+0.01	+0.02	+0.02	+0.02	+0.02
M Value			+0.99998	+0.99983	+0.99950	+0.99969	+0.99973	+0.99980	+0.99970	+0.99979	+0.99994
B Value			-0.06052	-0.02684	+0.00741	-0.00298	+0.00936	-0.03534	-0.00189	-0.00398	-0.01739
Status			Pass	Pass	Pass	Pass	Pass	Pass	Pass	Pass	Pass

Performed:  
03.03.2016 09:37:03

Created:

Reviewed:

Autoclave Sterilization - No. 1234567

EN285 - Autoclave Validation

Report Name: Autoclave Sterilization  
 XpertLog 3.6.6 - Licensed to: ITL  
 Imported to Autoclave\_ITLDEMO\_ on .\LIVES (19.09.2016 14:44:21)

Virtual Channels:  
 minval=min({#R756};{#R1979};{SR756P})  
 maxval=max({#R756};{#R1979};{SR756P})  
 deltaval=max({#R756};{#R1979};{SR756P})-min({#R756};{#R1979};{SR756P})  
 Equip. Info: EN285 Autoclave; Serial Number: ; Location:

Comment: Reference Probe Calibration Certificate



EN285 - Autoclave Validation

Report Name: Autoclave Sterilization  
 XpertLog 3.6.6 - Licensed to: ITL  
 Imported to Autoclave\_ITLDEMO\_ on .\LIVES (19.09.2016 14:44:21)

Virtual Channels:  
 minval=min({#R756};{#R1979};{SR756P})  
 maxval=max({#R756};{#R1979};{SR756P})  
 deltaVal=max({#R756};{#R1979};{SR756P})-min({#R756};{#R1979};{SR756P})  
 Equip. Info: EN285 Autoclave; Serial Number: ; Location:

Comment: Reference Probe Calibration Certificate

**BIPAC accreditation No: 001-CAL**  
 Reference: 1401-057  
 Date: 22 January 2016

**Calibration method :** The measurements are done in liquid nitrogen at atmospheric pressure, in temperature controlled calibration stirred baths, in the gallium fixed point, in the ice point, in the mercury triple point and intercompared with a standard.

**Used procedures :** PG-INCERTITUDES – Procédure générale du calcul d'incertitudes  
 PG-LABO\_ETAL – Procédure générale d'étalonnage en laboratoire

**Number of measurements :** 30 readings.

**Measurements processing :** Each mentioned value is the adjusted average of results.

**Standard(s) used :**

Identification	Description
S137/12	Standard platinum resistance thermometer
S296/13	Standard platinum resistance thermometer
S442/13	Standard platinum resistance thermometer
GA-164	Gallium melting point
M-0180	Mercury triple point


Page 2 of 4

EN285 - Autoclave Validation

Report Name: Autoclave Sterilization  
 XpertLog 3.6.6 - Licensed to: ITL  
 Imported to Autoclave\_ITLDEMO\_ on .\LIVES (19.09.2016 14:44:21)

Virtual Channels:  
 minval=min({#R756};{#R1979};{SR756P})  
 maxval=max({#R756};{#R1979};{SR756P})  
 deltaval=max({#R756};{#R1979};{SR756P})-min({#R756};{#R1979};{SR756P})  
 Equip. Info: EN285 Autoclave; Serial Number: ; Location:

Comment: Reference Probe Calibration Certificate



BIPAC accreditation No: D05-CAL  
 Reference: 1401-037  
 Date: 22 January 2016

**RESULT OF MEASUREMENTS**

**DESCRIPTION OF THE PROBE**

Description :	Immersion probe
Sensitive element :	PT 25
Identification :	PT25TE
Length :	450 mm
Diameter :	6.1 mm
Sheath :	Inox

---

Barcode LBT identification : SON\_16190

**Temperature**

**Parameters before adjustment**

prob type	IT590
RD.01	25.0000
a	0
b	0
c	0
d	0
e4	0
e4	0

**Measurements**

Before adjustment	Read value (°C)	True value (°C)	Uncertainty
	[C]	[C]	[C]
	4.783	-195.789	0.010
	21.454	-38.834	0.004
	25.411	-0.003	0.008
	39.298	140.022	0.006
	54.432	299.879	0.009

The pair of points used for the parameters calculation can be found in the asterisked columns (\*).

Page 3 of 4

EN285 - Autoclave Validation

Report Name: Autoclave Sterilization  
 XpertLog 3.6.6 - Licensed to: ITL  
 Imported to Autoclave\_ITLDEMO\_ on .\LIVES (19.09.2016 14:44:21)

Virtual Channels:  
 minval=min({#R756};{#R1979};{SR756P})  
 maxval=max({#R756};{#R1979};{SR756P})  
 deltaVal=max({#R756};{#R1979};{SR756P})-min({#R756};{#R1979};{SR756P})  
 Equip. Info: EN285 Autoclave; Serial Number: ; Location:

Comment: Reference Probe Calibration Certificate

**LBT TESTING & CALIBRATION**

SEIAC accreditation Nr: 001-CAL  
 Reference: 1601-037  
 Date: 22 January 2016

**Parameters after adjustment**

Py	790
ROOT	25.4121
A	-3.964061E-04
b	-4.366698E-04
c	0.000000E+00
d	0.000000E+00
A4	-5.644657E-04
b4	-1.242333E-04

**Measurements after adjustment**

Root value [°C]	True value [°C]	Error [°C]	Uncertainty [°C]
-196.001	-196.000	-0.001	0.010
-80.010	-80.000	-0.010	0.010
-60.005	-60.000	-0.005	0.010
-38.844	-38.834	-0.010	0.005
0.000	0.000	0.000	0.008
29.743	29.765	-0.022	0.004
139.995	140.000	-0.005	0.008
299.995	300.000	-0.005	0.010

The uncertainties mentioned in the calibration certificate apply only to the measured values during the calibration and give no information about the long term stability of the instrument.

Page 4 of 4